

For Research Use Only

VAMP2 Polyclonal ANTIBODY



Catalog Number: 10135-1-AP

2 Publications

Basic Information

Catalog Number:
10135-1-AP

Size:
43 µg/150 µl

Source:
Rabbit

Isotype:
IgG

Purification Method:
Antigen affinity purification

Immunogen Catalog Number:
AG0179

GenBank Accession Number:
BC002737

GeneID (NCBI):
6844

Full Name:
vesicle-associated membrane protein 2
(synaptobrevin 2)

Calculated MW:
13 kDa

Observed MW:
19 kDa

Recommended Dilutions:

WB 1:500-1:1000

IHC 1:20-1:200

Applications

Tested Applications:

IHC, WB, ELISA

Cited Applications:

IF, WB

Species Specificity:

human,mouse,rat

Cited Species:

human

Positive Controls:

WB : mouse brain tissue; fetal human brain tissue

IHC : human skeletal muscle tissue;

Note: suggested antigen retrieval with TE buffer pH 9.0; (*) Alternatively, antigen retrieval may be performed with citrate buffer pH 6.0

Background Information

VAMP2 (vesicle-associated membrane protein 2), also named as synaptobrevin 2, is a member of the SNARE (soluble NSF-attachment protein receptor) family proteins. Characterized by a common sequence called the SNARE motif, SNARE proteins are involved in membrane fusion and vesicular transport (PMD: 11252968). VAMP2, with a molecular mass of 15-19kDa, consists of a short N-terminal sequence, a SNARE motif, and a C-terminal transmembrane region. It is required for fast calcium-triggered synaptic vesicle fusion. VAMP2 forms a stable complex with STX1 (syntaxin 1) and SNAP25 (synaptosomal-associated protein 25) during synaptic vesicle fusion (PMD: 16793874). It also forms a distinct complex with synaptophysin. VAMP2 is expressed in nervous system and some non-neuronal tissues, such as skeletal muscle (PMD: 18570252).

Notable Publications

Author	Pubmed ID	Journal	Application
Roberta Cagnetta	30008298	Neuron	IF
Wulin Aerbajinai	26895964	J Biol Chem	WB

Storage

Storage:

Store at -20°C. Stable for one year after shipment.

Storage Buffer:

PBS with 0.1% sodium azide and 50% glycerol pH 7.3.

Aliquoting is unnecessary for -20°C storage

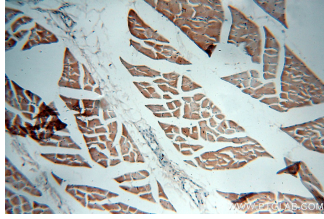
For technical support and original validation data for this product please contact:

T: 1 (888) 4PTGLAB (1-888-478-4522) (toll free in USA), or 1(312) 455-8498 (outside USA)

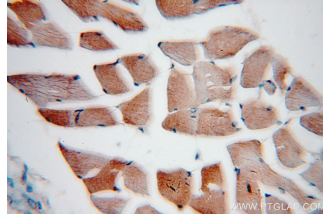
E: proteintech@ptglab.com
W: ptglab.com

This product is exclusively available under Proteintech Group brand and is not available to purchase from any other manufacturer.

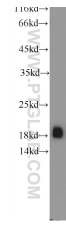
Selected Validation Data



Immunohistochemical of paraffin-embedded human skeletal muscle using 10135-1-AP(VAMP2 antibody) at dilution of 1:50 (under 10x lens)



Immunohistochemical of paraffin-embedded human skeletal muscle using 10135-1-AP(VAMP2 antibody) at dilution of 1:50 (under 40x lens)



mouse brain tissue were subjected to SDS PAGE followed by western blot with 10135-1-AP(VAMP2 Antibody) at dilution of 1:600 incubated at room temperature for 1.5 hours