

For Research Use Only

PPP1CB Polyclonal antibody

Catalog Number: 10140-2-AP

5 Publications



Basic Information

Catalog Number:

10140-2-AP

Size:

150ul, Concentration: 750 ug/ml by Nanodrop and 333 ug/ml by Bradford method using BSA as the standard;

Source:

Rabbit

Isotype:

IgG

Immunogen Catalog Number:

AG0183

GenBank Accession Number:

BC002697

GeneID (NCBI):

5500

UNIPROT ID:

P62140

Full Name:

protein phosphatase 1, catalytic subunit, beta isoform

Calculated MW:

37 kDa

Observed MW:

37 kDa

Purification Method:

Antigen affinity purification

Recommended Dilutions:

WB 1:500-1:2000

IP 0.5-4.0 ug for 1.0-3.0 mg of total protein lysate

IHC 1:250-1:1000

Applications

Tested Applications:

WB, IHC, IP, ELISA

Cited Applications:

WB, IHC, IP

Species Specificity:

human, mouse, rat

Cited Species:

human, rat

Positive Controls:

WB : human brain tissue, NIH/3T3

IP : mouse brain tissue,

IHC : human cervical cancer tissue, human ovary tumor tissue, mouse colon tissue

Note-IHC: suggested antigen retrieval with TE buffer pH 9.0; (*) Alternatively, antigen retrieval may be performed with citrate buffer pH 6.0

Background Information

Protein phosphatase 1 (PP1) is the main eukaryotic protein serine/threonine phosphatase that regulates an enormous variety of cellular processes including protein-protein interactions, gene transcription, cell-cycle progression and apoptosis. It is a trimeric complex composed of a regulatory subunit, a variable subunit and a catalytic subunit. The catalytic subunit of PP1 (PP1c) can interact with amount of regulatory subunits in vivo that target it to particular subcellular locations and regulate its activity towards specific substrates. PPP1CB migrated as a 37kd protein on SDS page. This antibody is specific to PPP1CB.

Notable Publications

Author	Pubmed ID	Journal	Application
Ru-Jia Liao	25224648	Clin Exp Pharmacol Physiol	WB, IP
Chao Huang	24196533	Am J Physiol Cell Physiol	WB
Sun Daxin D	21566537	Melanoma Res	WB,IHC

Storage

Storage:

Store at -20°C. Stable for one year after shipment.

Storage Buffer:

PBS with 0.02% sodium azide and 50% glycerol pH 7.3.

Aliquoting is unnecessary for -20°C storage

*** 20ul sizes contain 0.1% BSA

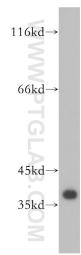
For technical support and original validation data for this product please contact:

T: 1 (888) 4PTGLAB (1-888-478-4522) (toll free in USA), or 1(312) 455-8498 (outside USA)

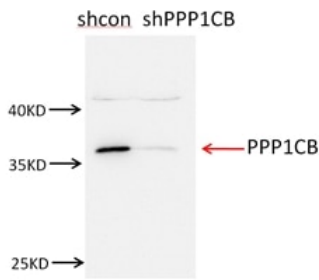
E: proteintech@ptglab.com
W: ptglab.com

This product is exclusively available under Proteintech Group brand and is not available to purchase from any other manufacturer.

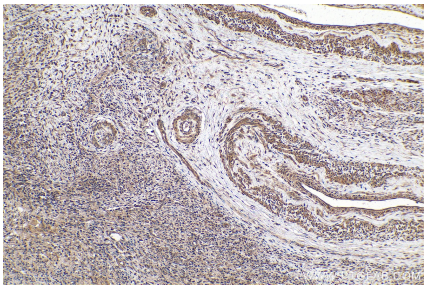
Selected Validation Data



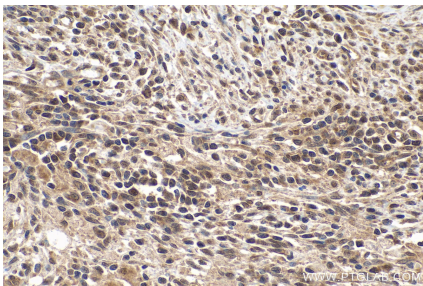
human brain tissue were subjected to SDS PAGE followed by western blot with 10140-2-AP (PPP1CB antibody) at dilution of 1:1500 incubated at room temperature for 1.5 hours.



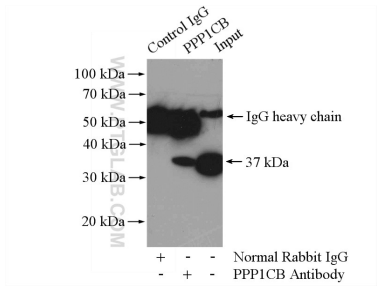
NIH3T3 cells were subjected to SDS PAGE followed by western blot with 10140-2-AP (PPP1CB antibody) at dilution of 1:1500.



Immunohistochemical analysis of paraffin-embedded human cervical cancer tissue slide using 10140-2-AP (PPP1CB-Specific antibody) at dilution of 1:500 (under 10x lens). Heat mediated antigen retrieval with Tris-EDTA buffer (pH 9.0).



1immunohistochemical analysis of paraffin-embedded human cervical cancer tissue slide using 10140-2-AP (PPP1CB-Specific antibody) at dilution of 1:500 (under 40x lens). Heat mediated antigen retrieval with Tris-EDTA buffer (pH 9.0).



IP result of anti-PPP1CB (IP:10140-2-AP, 4ug; Detection:10140-2-AP 1:1000) with mouse brain tissue lysate 4000ug.