

For Research Use Only

RAB6A Polyclonal antibody

Catalog Number: 10187-2-AP

Featured Product

8 Publications



Basic Information

Catalog Number:

10187-2-AP

Size:

150ul, Concentration: 350 ug/ml by Nanodrop;

Source:

Rabbit

Isotype:

IgG

Immunogen Catalog Number:

AG0240

GenBank Accession Number:

BC003617

GeneID (NCBI):

5870

UNIPROT ID:

P20340

Full Name:

RAB6A, member RAS oncogene family

Calculated MW:

24 kDa

Observed MW:

24 kDa

Purification Method:

Antigen affinity purification

Recommended Dilutions:

WB: 1:2000-1:16000

IP: 0.5-4.0 ug for 1.0-3.0 mg of total protein lysate

IF/ICC: 1:400-1:1600

Applications

Tested Applications:

WB, IF/ICC, IP, ELISA

Cited Applications:

WB, IF

Species Specificity:

human, mouse, rat

Cited Species:

human, mouse, rat

Positive Controls:

WB: NIH/3T3 cells, mouse brain tissue, rat brain tissue

IP: mouse brain tissue,

IF/ICC: HeLa cells,

Background Information

Members of the Rab subfamily of small GTPases play an important role in the regulation of intracellular transport routes. Rab6, localized to the Golgi apparatus, has been shown to be a regulator of membrane traffic from the Golgi apparatus towards the endoplasmic reticulum (ER). The expression of Rab6 is ubiquitous.

Notable Publications

Author	Pubmed ID	Journal	Application
Xiaochao Tan	32931483	J Clin Invest	WB
Liyuan Guo	34332492	J Neuroimmunol	IF
Xinxin Zuo	33398173	Nat Struct Mol Biol	WB

Storage

Storage:

Store at -20°C. Stable for one year after shipment.

Storage Buffer:

PBS with 0.02% sodium azide and 50% glycerol, pH7.3

Aliquoting is unnecessary for -20°C storage

*** 20ul sizes contain 0.1% BSA

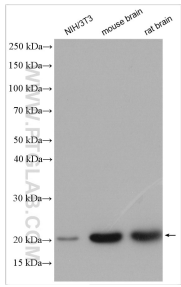
For technical support and original validation data for this product please contact:

T: 1 (888) 4PTGLAB (1-888-478-4522) (toll free in USA), or 1(312) 455-8498 (outside USA)

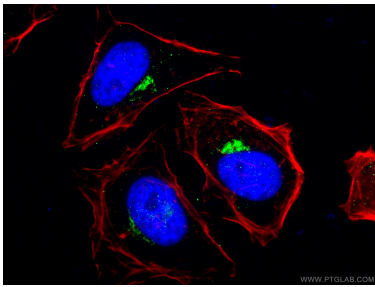
E: proteintech@ptglab.com
W: ptglab.com

This product is exclusively available under Proteintech Group brand and is not available to purchase from any other manufacturer.

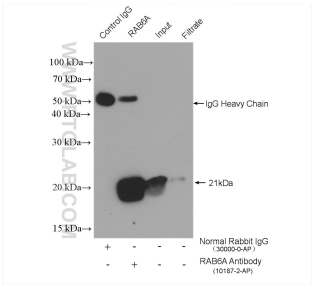
Selected Validation Data



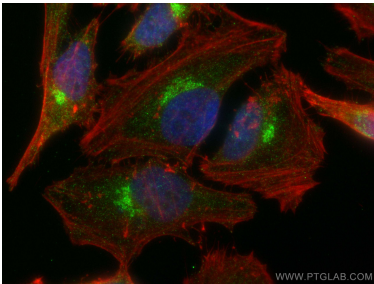
Various lysates were subjected to SDS PAGE followed by western blot with 10187-2-AP (RAB6A antibody) at dilution of 1:8000 incubated at room temperature for 1.5 hours.



Immunofluorescent analysis of (4% PFA) fixed HeLa cells using 10187-2-AP (RAB6A antibody), at dilution of 1:200 and CoraLite®488-Conjugated AffiniPure Goat Anti-Rabbit IgG(H+L).F-actin is stained using CL555-phalloidin (red) and DNA is stained by DAPI (blue).



IP result of anti-RAB6A (IP:10187-2-AP, 4ug; Detection:10187-2-AP 1:1000) with mouse brain tissue lysate 1840 ug.



Immunofluorescent analysis of (4% PFA) fixed HeLa cells using RAB6A antibody (10187-2-AP) at dilution of 1:800 and CoraLite®488-Conjugated AffiniPure Goat Anti-Rabbit IgG(H+L), CL594-phalloidin (red).