

For Research Use Only

IGFBP3 Polyclonal antibody

Catalog Number: 10189-2-AP

Featured Product

10 Publications



Basic Information

Catalog Number: 10189-2-AP	GenBank Accession Number: BC000013	Purification Method: Antigen affinity purification
Size: 150ul, Concentration: 500 µg/ml by Nanodrop and 247 µg/ml by Bradford method using BSA as the standard;	GeneID (NCBI): 3486	Recommended Dilutions: WB 1:200-1:1000 IHC 1:20-1:200 IF 1:10-1:100
Source: Rabbit	Full Name: insulin-like growth factor binding protein 3	
Isotype: IgG	Calculated MW: 32 kDa	
Immunogen Catalog Number: AG0242	Observed MW: 32-37 kDa	

Applications

Tested Applications: IF, IHC, WB, ELISA	Positive Controls:
Cited Applications: IHC, WB	WB: mouse colon tissue, HeLa cells, A2780 cells, HepG2 cells
Species Specificity: human, mouse	IHC: human breast cancer tissue, human colon cancer tissue
Cited Species: chicken, human, mouse, rat	IF: HeLa cells,
Note-IHC: suggested antigen retrieval with TE buffer pH 9.0; (*) Alternatively, antigen retrieval may be performed with citrate buffer pH 6.0	

Background Information

Insulin-like growth factor binding protein-3 (IGFBP-3) contains a 27 amino acid putative signal sequence followed by a mature protein of 264 amino acids with 18 cysteine residues clustered near the N- and C-terminus. Accordingly, expression of the cloned IGFBP-3 cDNA in mammalian tissue culture cells results in secretion of the protein into the culture medium. IGFBP-3 shares high homology (33% amino acid identity) including conservation of all 18 cysteine residues with a smaller human IGF-binding protein (BP-28) identified in amniotic fluid. IGFBP-3 has one or more glycosylation sites with a protein core of 30 kDa. Western blots revealed that the 39-45 kDa IGFBP-3 fragment is a glycoprotein. (PMID: 23403918, PMID: 24926947, PMID: 19887447)

Notable Publications

Author	Pubmed ID	Journal	Application
Yulin Guo	29075359	Clin Epigenetics	WB
Mao-Xiong Wu	33184863	J Cell Physiol	WB
Yiqiu Lin	31176915	Stem Cell Res	WB

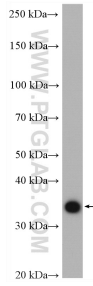
Storage

Storage:
Store at -20°C. Stable for one year after shipment.
Storage Buffer:
PBS with 0.02% sodium azide and 50% glycerol pH 7.3.
Aliquoting is unnecessary for -20°C storage

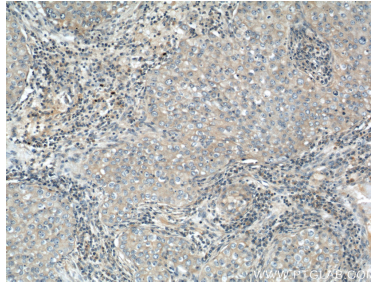
For technical support and original validation data for this product please contact:
T: 1 (888) 4PTGLAB (1-888-478-4522) (toll free in USA), or 1(312) 455-8498 (outside USA)
E: proteintech@ptglab.com
W: ptglab.com

This product is exclusively available under Proteintech Group brand and is not available to purchase from any other manufacturer.

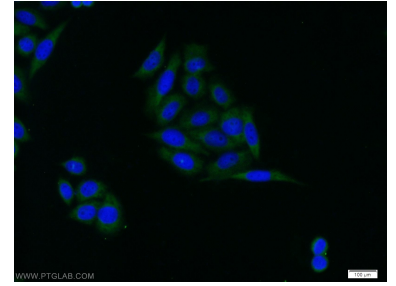
Selected Validation Data



mouse colon tissue were subjected to SDS PAGE followed by western blot with 10189-2-AP (IGFBP3 antibody) at dilution of 1:300 incubated at room temperature for 1.5 hours.



Immunohistochemical analysis of paraffin-embedded human breast cancer using 10189-2-AP (IGFBP3 antibody) at dilution of 1:50 (under 10x lens).



Immunofluorescent analysis of HeLa cells using 10189-2-AP (IGFBP3 antibody) at dilution of 1:25 and Alexa Fluor 488-conjugated AffiniPure Goat Anti-Rabbit IgG(H+L).