

For Research Use Only

# EFTUD2 Polyclonal antibody

Catalog Number: 10208-1-AP

Featured Product

17 Publications



## Basic Information

### Catalog Number:

10208-1-AP

### Size:

150ul, Concentration: 300 ug/ml by Nanodrop and 233 ug/ml by Bradford method using BSA as the standard;

### Source:

Rabbit

### Isotype:

IgG

### Immunogen Catalog Number:

AG0279

### GenBank Accession Number:

BC002360

### GeneID (NCBI):

9343

### UNIPROT ID:

Q15029

### Full Name:

elongation factor Tu GTP binding domain containing 2

### Calculated MW:

116 kDa

### Observed MW:

116 kDa

### Purification Method:

Antigen affinity purification

### Recommended Dilutions:

WB 1:500-1:2000

IP 0.5-4.0 ug for 1.0-3.0 mg of total protein lysate

IF/ICC 1:400-1:1600

## Applications

### Tested Applications:

WB, IF/ICC, IP, ELISA

### Cited Applications:

WB, IHC, IF, IP, CoIP, PLA

### Species Specificity:

human

### Cited Species:

human, mouse

### Positive Controls:

WB : HeLa cells,

IP : HeLa cells,

IF/ICC : HepG2 cells,

## Background Information

EFTUD2 encodes the 116 kDa U5 small nuclear ribonucleoprotein (snRNP) component, also named SNU114, it has GTP binding activity and is required for pre-mRNA splicing. Evolutionarily conserved human snRNP protein (U5-116kDa) is homologous to the ribosomal elongation factor EF-2 (ribosomal translocase). Defects in EFTUD2 are the cause of mandibulofacial dysostosis with microcephaly (MFD). So far, acetylation and phosphorylation sites of EFTUD2 have been identified. Catalog#10208-1-AP is a rabbit polyclonal antibody raised against the N-terminal of human EFTUD2.

## Notable Publications

Author	Pubmed ID	Journal	Application
Zhe Chen	28878014	J Biol Chem	WB,IP
Nam-Kyung Yu	34816099	iScience	PLA,CoIP
Moon Kyoo Jang	25758368	Proteomics	WB

## Storage

### Storage:

Store at -20°C. Stable for one year after shipment.

### Storage Buffer:

PBS with 0.02% sodium azide and 50% glycerol pH 7.3.

Aliquoting is unnecessary for -20°C storage

\*\*\* 20ul sizes contain 0.1% BSA

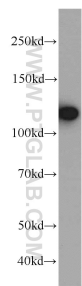
For technical support and original validation data for this product please contact:

T: 1 (888) 4PTGLAB (1-888-478-4522) (toll free in USA), or 1(312) 455-8498 (outside USA)

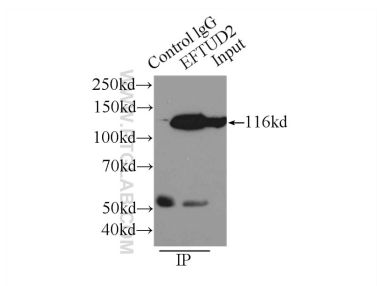
E: [proteintech@ptglab.com](mailto:proteintech@ptglab.com)  
W: [ptglab.com](http://ptglab.com)

This product is exclusively available under Proteintech Group brand and is not available to purchase from any other manufacturer.

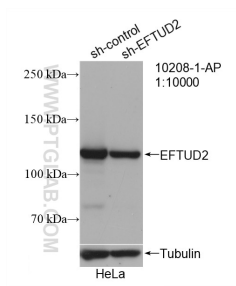
Selected Validation Data



HeLa cells were subjected to SDS PAGE followed by western blot with 10208-1-AP (EFTUD2 antibody) at dilution of 1:1000 incubated at room temperature for 1.5 hours.



IP result of anti-EFTUD2 (IP:10208-1-AP, 3ug; Detection:10208-1-AP 1:1000) with HeLa cells lysate 4650ug.



WB result of EFTUD2 antibody (10208-1-AP; 1:10000; incubated at room temperature for 1.5 hours) with sh-Control and sh-EFTUD2 transfected HeLa cells.



Immunofluorescent analysis of (4% PFA) fixed HepG2 cells using EFTUD2 antibody (10208-1-AP) at dilution of 1:800 and CoraLite®594-Conjugated Goat Anti-Rabbit IgG(H+L) (SA00013-4), CL488-phalloidin (green).