

For Research Use Only

CDC37 Polyclonal antibody

Catalog Number: 10218-1-AP

Featured Product

14 Publications



Basic Information

Catalog Number:

10218-1-AP

Size:

150ul, Concentration: 350 ug/ml by Nanodrop and 200 ug/ml by Bradford method using BSA as the standard;

Source:

Rabbit

Isotype:

IgG

Immunogen Catalog Number:

AG0267

GenBank Accession Number:

BC000083

GeneID (NCBI):

11140

UNIPROT ID:

Q16543

Full Name:

cell division cycle 37 homolog (S. cerevisiae)

Calculated MW:

44 kDa

Observed MW:

45-50 kDa

Purification Method:

Antigen affinity purification

Recommended Dilutions:

WB 1:500-1:2000

IP 0.5-4.0 ug for 1.0-3.0 mg of total protein lysate

IHC 1:20-1:200

IF/ICC 1:200-1:800

Applications

Tested Applications:

WB, IHC, IF/ICC, FC (Intra), IP, ELISA

Cited Applications:

WB, IHC, IP, RIP

Species Specificity:

human, mouse, monkey

Cited Species:

human, mouse

Positive Controls:

WB : HEK-293 cells, A431 cells, COS-7 cells, Jurkat cells

IP : HEK-293 cells,

IHC : human colon cancer tissue,

IF/ICC : HeLa cells, HEK-293 cells, A431 cells, MCF-7 cells

Note-IHC: suggested antigen retrieval with TE buffer pH 9.0; (*) Alternatively, antigen retrieval may be performed with citrate buffer pH 6.0

Background Information

Cdc (cell division control) family of proteins are regulatory proteins involved in the processes of cell cycle and proliferation. CDC37, migrated as a protein of 50 kDa in SDS PAGE, is a co-chaperone protein that recruits several immature client kinases to Hsp90 for proper folding. It functions in association with Hsp90, although little is known of its mechanism of action or where it fits into a folding pathway involving other Hsp90 cochaperones. CDC37 up-regulation is a common early event in some localized human cancers. But, the effect of CDC37 dysregulation in human cells is unclear.

Notable Publications

Author	Pubmed ID	Journal	Application
Jiawei Zhang	35595767	Nat Commun	WB
Qian Zhao	32156008	Int J Mol Sci	WB
Dongrong Zhu	33667688	Pharmacol Res	WB, IP

Storage

Storage:

Store at -20°C. Stable for one year after shipment.

Storage Buffer:

PBS with 0.02% sodium azide and 50% glycerol pH 7.3.

Aliquoting is unnecessary for -20°C storage

*** 20ul sizes contain 0.1% BSA

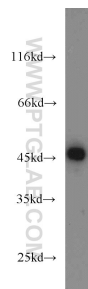
For technical support and original validation data for this product please contact:

T: 1 (888) 4PTGLAB (1-888-478-4522) (toll free in USA), or 1(312) 455-8498 (outside USA)

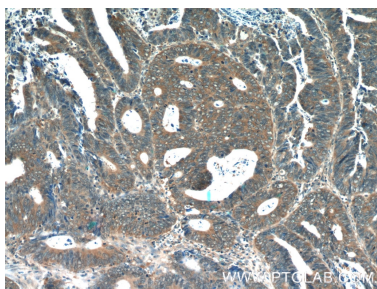
E: proteintech@ptglab.com
W: ptglab.com

This product is exclusively available under Proteintech Group brand and is not available to purchase from any other manufacturer.

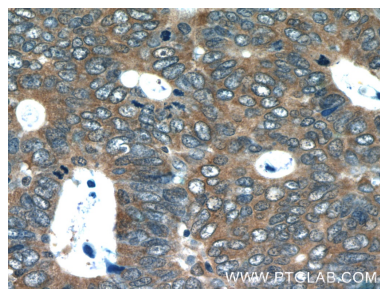
Selected Validation Data



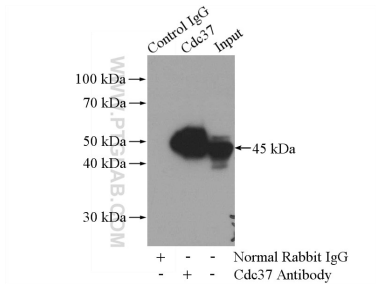
HEK-293 cells were subjected to SDS PAGE followed by western blot with 10218-1-AP (CDC37 antibody) at dilution of 1:1000 incubated at room temperature for 1.5 hours.



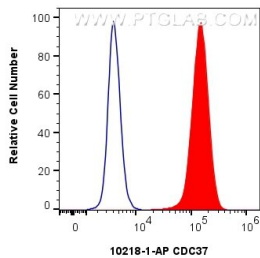
Immunohistochemical analysis of paraffin-embedded human colon cancer tissue slide using 10218-1-AP (CDC37 Antibody) at dilution of 1:50 (under 10x lens).



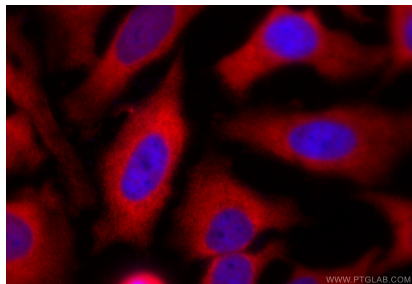
Immunohistochemical analysis of paraffin-embedded human colon cancer tissue slide using 10218-1-AP (CDC37 Antibody) at dilution of 1:50 (under 40x lens).



IP result of anti-CDC37 (IP:10218-1-AP, 4ug; Detection:10218-1-AP 1:1000) with HEK-293 cells lysate 3200ug.



1x10⁶ MCF-7 cells were intracellularly stained with 0.8 ug CDC37 Polyclonal antibody (10218-1-AP) and CoraLite® 488-Conjugated AffiniPure Goat Anti-Rabbit IgG(H+L) (SA00013-2)(red), or 0.8 ug Rabbit IgG control Rabbit PolyAb (30000-O-AP) (blue). Cells were fixed with 4% PFA and permeabilized with Flow Cytometry Perm Buffer (PF00011-C).



Immunofluorescent analysis of (-20°C Ethanol) fixed HeLa cells using CDC37 antibody (10218-1-AP) at dilution of 1:400 and CoraLite® 594-Conjugated Goat Anti-Rabbit IgG(H+L) (SA00013-4).