

For Research Use Only

GNB1 Polyclonal antibody

Catalog Number: 10247-2-AP

Featured Product

9 Publications



Basic Information

Catalog Number:

10247-2-AP

Size:

150ul, Concentration: 600 ug/ml by Nanodrop and 353 ug/ml by Bradford method using BSA as the standard;

Source:

Rabbit

Isotype:

IgG

Immunogen Catalog Number:

AG0313

GenBank Accession Number:

BC004186

GeneID (NCBI):

2782

UNIPROT ID:

P62873

Full Name:

guanine nucleotide binding protein (G protein), beta polypeptide 1

Calculated MW:

37 kDa

Observed MW:

37 kDa

Purification Method:

Antigen affinity purification

Recommended Dilutions:

WB 1:5000-1:50000

IHC 1:20-1:200

IF/ICC 1:50-1:500

Applications

Tested Applications:

WB, IHC, IF/ICC, ELISA

Cited Applications:

WB, IHC, IF, IP

Species Specificity:

human, mouse, rat

Cited Species:

human, mouse

Note-IHC: suggested antigen retrieval with TE buffer pH 9.0; (*) Alternatively, antigen retrieval may be performed with citrate buffer pH 6.0

Positive Controls:

WB : HeLa cells, Jurkat cells, mouse brain tissue, rat brain tissue

IHC : human pancreas cancer tissue, human gliomas tissue

IF/ICC : HepG2 cells,

Background Information

GNB1(Guanine nucleotide-binding protein G(I)/G(S)/G(T) subunit beta-1) belongs to the WD repeat G protein beta family. The guanine nucleotide-binding proteins (G proteins) are involved as a modulator or transducer in various transmembrane signaling systems and the beta and gamma chains are required for the GTPase activity, for replacement of GDP by GTP, and for G protein-effector interaction. GNB1 can form dimers with all gamma subunits analyzed (PMID:12782285).

Notable Publications

Author	Pubmed ID	Journal	Application
ZhiWei Hu	35192430	Bioengineered	WB
Saba LM	21185315	Neuropharmacology.	WB
Fangtao Li	34860863	PLoS Pathog	IF,IP

Storage

Storage:

Store at -20°C. Stable for one year after shipment.

Storage Buffer:

PBS with 0.02% sodium azide and 50% glycerol pH 7.3.

Aliquoting is unnecessary for -20°C storage

*** 20ul sizes contain 0.1% BSA

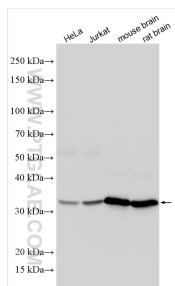
For technical support and original validation data for this product please contact:

T: 1 (888) 4PTGLAB (1-888-478-4522) (toll free in USA), or 1(312) 455-8498 (outside USA)

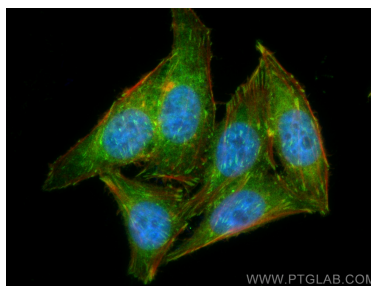
E: proteintech@ptglab.com
W: ptglab.com

This product is exclusively available under Proteintech Group brand and is not available to purchase from any other manufacturer.

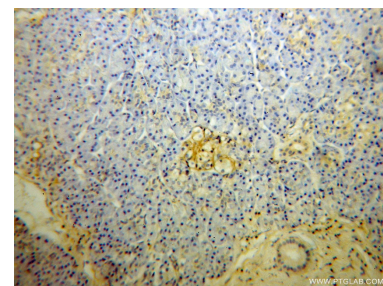
Selected Validation Data



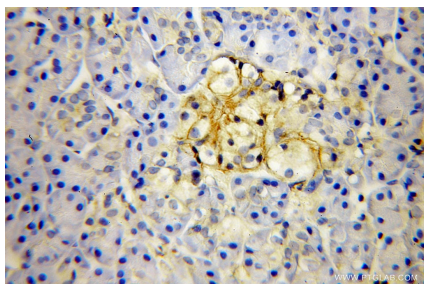
Various lysates were subjected to SDS PAGE followed by western blot with 10247-2-AP (GNB1 antibody) at dilution of 1:20000 incubated at room temperature for 1.5 hours.



Immunofluorescent analysis of (4% PFA) fixed HepG2 cells using GNB1 antibody (10247-2-AP) at dilution of 1:200 and CoraLite®488-Conjugated Goat Anti-Rabbit IgG(H+L) (SA00013-2), CL594-Phalloidin (red).



Immunohistochemical analysis of paraffin-embedded human pancreas cancer using 10247-2-AP (GNB1 antibody) at dilution of 1:100 (under 10x lens).



Immunohistochemical analysis of paraffin-embedded human pancreas cancer using 10247-2-AP (GNB1 antibody) at dilution of 1:100 (under 40x lens).