

For Research Use Only

# Cdc20 Polyclonal antibody

Catalog Number: 10252-1-AP

Featured Product

12 Publications



## Basic Information

**Catalog Number:**  
10252-1-AP

**Size:**  
150UL, Concentration: 327 µg/ml by Bradford method using BSA as the standard;

**Source:**  
Rabbit

**Isotype:**  
IgG

**Immunogen Catalog Number:**  
AG0295

**GenBank Accession Number:**  
BC001088

**GeneID (NCBI):**  
991

**Full Name:**  
cell division cycle 20 homolog (S. cerevisiae)

**Calculated MW:**  
55 kDa

**Observed MW:**  
55 kDa

**Purification Method:**  
Antigen affinity purification

**Recommended Dilutions:**  
WB 1:500-1:1000  
IP 0.5-4.0 µg for IP and 1:500-1:1000 for WB  
IHC 1:50-1:500

## Applications

**Tested Applications:**  
IHC, IP, WB, ELISA

**Cited Applications:**  
IF, IHC, WB

**Species Specificity:**  
human

**Cited Species:**  
human, mouse

**Note-IHC: suggested antigen retrieval with TE buffer pH 9.0; (\*) Alternatively, antigen retrieval may be performed with citrate buffer pH 6.0**

**Positive Controls:**

**WB:** Jurkat cells, HL-60 cells, HEK-293 cells, HeLa cells, PC-3 cells

**IP:** Jurkat cells,

**IHC:** human breast cancer tissue, human colon cancer tissue, human urothelial carcinoma tissue

## Background Information

### Notable Publications

Author	Pubmed ID	Journal	Application
Yang Gao	32932732	Int J Mol Sci	WB
James Holder	32869743	Elife	WB
Hagai Marmor-Kollet	33217318	Mol Cell	IF

## Storage

**Storage:**

Store at -20°C. Stable for one year after shipment.

**Storage Buffer:**

PBS with 0.1% sodium azide and 50% glycerol pH 7.3.

Aliquoting is unnecessary for -20°C storage

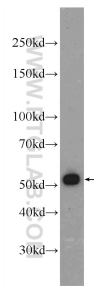
For technical support and original validation data for this product please contact:

T: 1 (888) 4PTGLAB (1-888-478-4522) (toll free in USA), or 1(312) 455-8498 (outside USA)

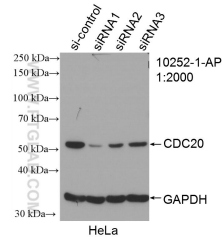
E: proteintech@ptglab.com  
W: ptglab.com

**This product is exclusively available under Proteintech Group brand and is not available to purchase from any other manufacturer.**

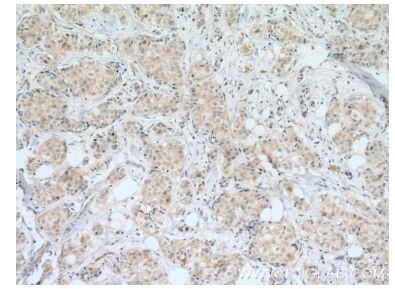
## Selected Validation Data



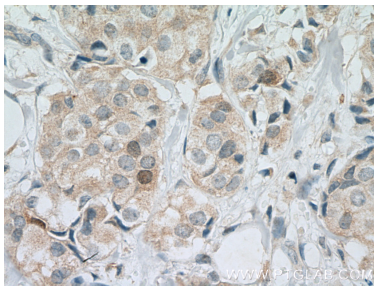
Jurkat cells were subjected to SDS PAGE followed by western blot with 10252-1-AP (CDC20 Antibody) at dilution of 1:800 incubated at room temperature for 1.5 hours.



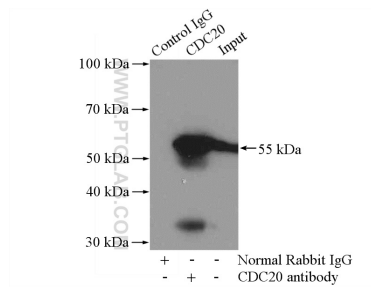
WB result of Cdc20 antibody (10252-1-AP; 1:2000; incubated at room temperature for 1.5 hours) with sh-Control and sh-Cdc20 transfected HeLa cells.



Immunohistochemical analysis of paraffin-embedded human breast cancer tissue slide using 10252-1-AP (CDC20 Antibody) at dilution of 1:200 (under 10x lens). Heat mediated antigen retrieval with Tris-EDTA buffer (pH 9.0).



Immunohistochemical analysis of paraffin-embedded human breast cancer tissue slide using 10252-1-AP (CDC20 Antibody) at dilution of 1:200 (under 40x lens). Heat mediated antigen retrieval with Tris-EDTA buffer (pH 9.0).



IP Result of anti-CDC20 (IP:10252-1-AP, 4ug; Detection:10252-1-AP 1:800) with Jurkat cells lysate 3200ug.