

For Research Use Only

IκB Alpha Polyclonal antibody

Catalog Number: 10268-1-AP

598 Publications



Basic Information

Catalog Number:

10268-1-AP

Size:

150ul, Concentration: 1000 ug/ml by Nanodrop;

Source:

Rabbit

Isotype:

IgG

Immunogen Catalog Number:

AG0345

GenBank Accession Number:

BC002601

GeneID (NCBI):

4792

UNIPROT ID:

P25963

Full Name:

nuclear factor of kappa light polypeptide gene enhancer in B-cells inhibitor, alpha

Calculated MW:

36 kDa

Observed MW:

36 kDa

Purification Method:

Antigen affinity purification

Recommended Dilutions:

WB: 1:5000-1:50000

IP: 0.5-4.0 ug for 1.0-3.0 mg of total protein lysate

IHC: 1:50-1:500

IF/ICC: 1:200-1:800

FC (Intra): 0.40 ug per 10⁶ cells in a 100 μl suspension

Applications

Tested Applications:

WB, IHC, IF/ICC, FC (Intra), IP, ELISA

Cited Applications:

WB, IHC, IF, CoIP

Species Specificity:

human, mouse, rat, pig

Cited Species:

human, mouse, rat, pig, chicken, bovine, ducks

Note-IHC: suggested antigen retrieval with TE buffer pH 9.0; (*) Alternatively, antigen retrieval may be performed with citrate buffer pH 6.0

Positive Controls:

WB: A431 cells, HeLa cells, HEK-293 cells, pig liver tissue, HL-60 cells, HepG2 cells, Jurkat cells, NIH/3T3 cells, PC-12 cells

IP: HeLa cells,

IHC: human stomach tissue, human kidney tissue, human prostate cancer tissue, mouse kidney tissue, rat stomach tissue

IF/ICC: HeLa cells, A431 cells

FC (Intra): HeLa cells,

Background Information

Nuclear factor of kappa light polypeptide gene enhancer in B-cells inhibitor, alpha (NFKBIA, synonyms: IKBA, MAD-3, NFKB1). NFKB1 or NFKB2 is bound to REL, RELA, or RELB to form the NFKB complex. The NFKB complex is inhibited by I-kappa-B proteins (NFKBIA or NFKBIB), which inactivate NF-kappa-B by trapping it in the cytoplasm. Phosphorylation of serine residues on the I-kappa-B proteins by kinases (IKBKA, or IKBKB) marks them for destruction via the ubiquitination pathway, thereby allowing activation of the NF-kappa-B complex. Activated NFKB complex translocates into the nucleus and binds DNA at kappa-B-binding motifs such as 5-prime GGGRNNYYCC 3-prime or 5-prime HGGARNYYCC 3-prime.

Notable Publications

Author	Pubmed ID	Journal	Application
Menghui Xu	36290677	Antioxidants (Basel)	WB
Yuqian Wang	32942847	J Agric Food Chem	WB
Kun-Yi Li	32920833	J Neurochem	WB

Storage

Storage:

Store at -20°C. Stable for one year after shipment.

Storage Buffer:

PBS with 0.02% sodium azide and 50% glycerol, pH7.3

Aliquoting is unnecessary for -20°C storage

*** 20ul sizes contain 0.1% BSA

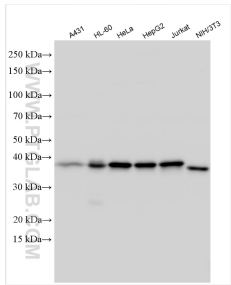
For technical support and original validation data for this product please contact:

T: 1 (888) 4PTGLAB (1-888-478-4522) (toll free in USA), or 1(312) 455-8498 (outside USA)

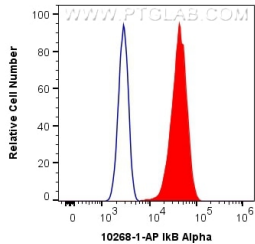
E: proteintech@ptglab.com
W: ptglab.com

This product is exclusively available under Proteintech Group brand and is not available to purchase from any other manufacturer.

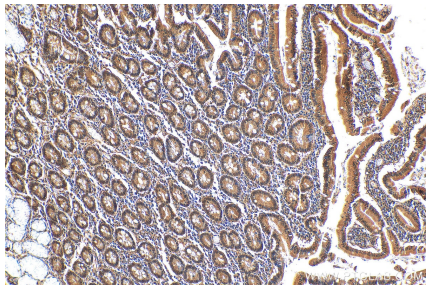
Selected Validation Data



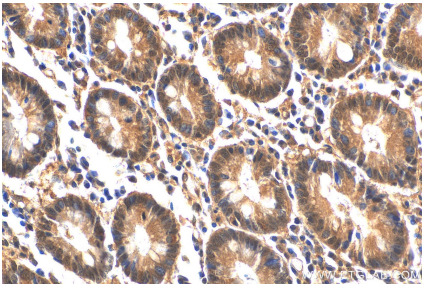
Various lysates were subjected to SDS PAGE followed by western blot with 10268-1-AP (IκB Alpha antibody) at dilution of 1:10000 incubated at room temperature for 1.5 hours.



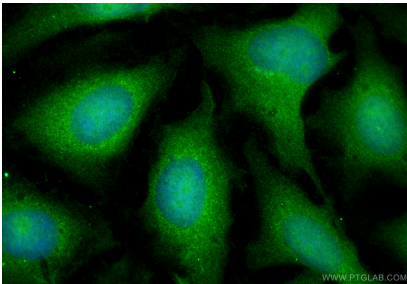
1X10⁶ HeLa cells were intracellularly stained with 0.4 ug Anti-Human IκB Alpha (10268-1-AP) and CoraLite®488-Conjugated AffiniPure Goat Anti-Rabbit IgG(H+L) at dilution 1:1000 (red), or 0.4 ug Isotype Control. Cells were fixed with 4% PFA and permeabilized with Flow Cytometry Perm Buffer (PF00011-C).



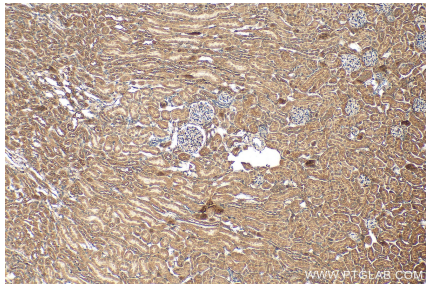
Immunohistochemical analysis of paraffin-embedded human stomach tissue slide using 10268-1-AP (IκB Alpha antibody) at dilution of 1:200 (under 10x lens).



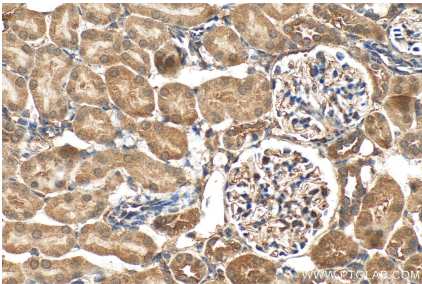
Immunohistochemical analysis of paraffin-embedded human stomach tissue slide using 10268-1-AP (IκB Alpha antibody) at dilution of 1:200 (under 40x lens).



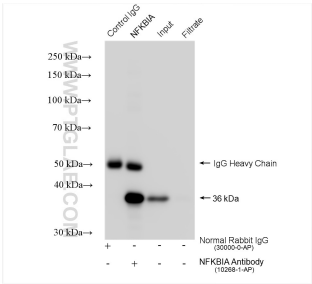
Immunofluorescent analysis of (4% PFA) fixed HeLa cells using IκB Alpha antibody (10268-1-AP) at dilution of 1:400 and CoraLite®488-Conjugated Goat Anti-Rabbit IgG(H+L) (SA00013-2).



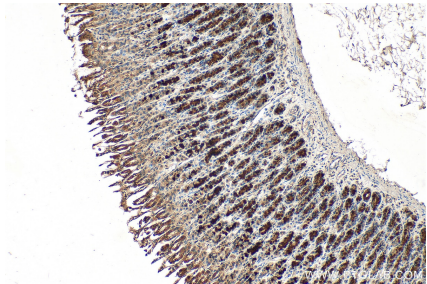
Immunohistochemical analysis of paraffin-embedded mouse kidney tissue slide using 10268-1-AP (IκB Alpha antibody) at dilution of 1:200 (under 10x lens). Heat mediated antigen retrieval with Tris-EDTA buffer (pH 9.0).



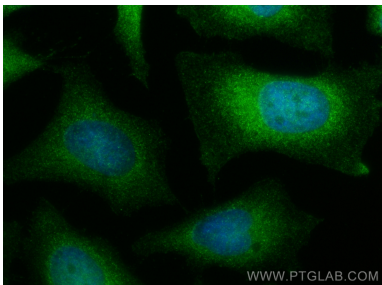
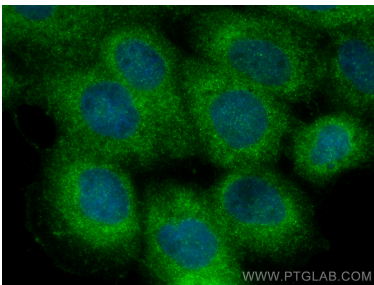
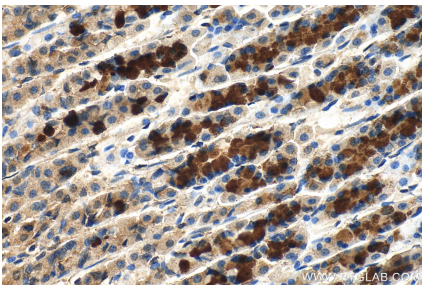
Immunohistochemical analysis of paraffin-embedded mouse kidney tissue slide using 10268-1-AP (IκB Alpha antibody) at dilution of 1:200 (under 40x lens). Heat mediated antigen retrieval with Tris-EDTA buffer (pH 9.0).



IP result of anti-IκB Alpha (IP:10268-1-AP, 4ug; Detection:10268-1-AP 1:15000) with HeLa cells lysate 1320 ug.



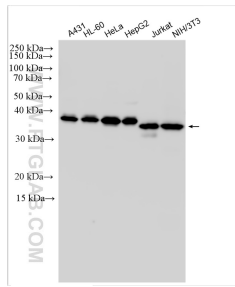
Immunohistochemical analysis of paraffin-embedded rat stomach tissue slide using 10268-1-AP (IκB Alpha antibody) at dilution of 1:400 (under 10x lens). Heat mediated antigen retrieval with Tris-EDTA buffer (pH 9.0).



Immunohistochemical analysis of paraffin-embedded rat stomach tissue slide using 10268-1-AP (IkB Alpha antibody) at dilution of 1:400 (under 40x lens). Heat mediated antigen retrieval with Tris-EDTA buffer (pH 9.0).

Immunofluorescent analysis of (4% PFA) fixed A431 cells using IkB Alpha antibody (10268-1-AP) at dilution of 1:400 and CoraLite®488-Conjugated Goat Anti-Rabbit IgG(H+L) (SA00013-2).

Immunofluorescent analysis of (4% PFA) fixed HeLa cells using IkB Alpha antibody (10268-1-AP) at dilution of 1:400 and CoraLite®488-Conjugated Goat Anti-Rabbit IgG(H+L) (SA00013-2).



Various lysates were subjected to SDS PAGE followed by western blot with 10268-1-AP (IkB Alpha antibody) at dilution of 1:15000 incubated at room temperature for 1.5 hours.