

For Research Use Only

POLD2 Polyclonal antibody

Catalog Number: 10288-1-AP

1 Publications



Basic Information

Catalog Number:

10288-1-AP

Size:

150ul , Concentration: 170 µg/ml by Nanodrop and 133 µg/ml by Bradford method using BSA as the standard;

Source:

Rabbit

Isotype:

IgG

Immunogen Catalog Number:

AG0270

GenBank Accession Number:

BC000459

GeneID (NCBI):

5425

Full Name:

polymerase (DNA directed), delta 2, regulatory subunit 50kDa

Calculated MW:

51 kDa

Observed MW:

52 kDa

Purification Method:

Antigen affinity purification

Recommended Dilutions:

WB 1:500-1:2000

Applications

Tested Applications:

WB,ELISA

Cited Applications:

WB

Species Specificity:

human, mouse, rat

Cited Species:

human

Positive Controls:

WB : HepG2 cells, HEK-293 cells, mouse pancreas tissue, SGC-7901 cells

Background Information

POLD2, also named as DNA polymerase delta subunit 2, is a 469 amino acid protein, which belongs to the DNA polymerase delta/II small subunit family. The function of the small subunit is not yet clear. POLD2 has an essential function for the small subunit in the heterodimeric core enzyme.

Notable Publications

Author	Pubmed ID	Journal	Application
Kim Myoung Shin MS	23254330	Nucleic Acids Res	WB

Storage

Storage:

Store at -20°C. Stable for one year after shipment.

Storage Buffer:

PBS with 0.02% sodium azide and 50% glycerol pH 7.3.

Aliquoting is unnecessary for -20°C storage

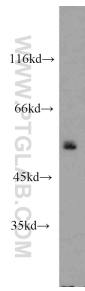
For technical support and original validation data for this product please contact:

T: 1 (888) 4PTGLAB (1-888-478-4522) (toll free in USA), or 1(312) 455-8498 (outside USA)

E: proteintech@ptglab.com
W: ptglab.com

This product is exclusively available under Proteintech Group brand and is not available to purchase from any other manufacturer.

Selected Validation Data



HepG2 cells were subjected to SDS PAGE followed by western blot with 10288-1-AP (POLD2 antibody) at dilution of 1:1000 incubated at room temperature for 1.5 hours.