

For Research Use Only

CRMP1 Polyclonal antibody

Catalog Number: 10317-1-AP

4 Publications



Basic Information

Catalog Number: 10317-1-AP	GenBank Accession Number: BC000252	Purification Method: Antigen affinity purification
Size: 150ul, Concentration: 450 ug/ml by Nanodrop and 267 ug/ml by Bradford method using BSA as the standard;	GeneID (NCBI): 1400	Recommended Dilutions: WB: 1:1000-1:4000
Source: Rabbit	UNIPROT ID: Q14194	IHC: 1:50-1:500
Isotype: IgG	Full Name: collapsin response mediator protein 1	IF/ICC: 1:200-1:800
Immunogen Catalog Number: AG0369	Calculated MW: 62 kDa	
	Observed MW: 62 kDa	

Applications

Tested Applications: WB, IHC, IF/ICC, ELISA	Positive Controls:
Cited Applications: WB, ColP	WB: mouse lung tissue, mouse brain tissue, rat lung tissue
Species Specificity: human, mouse, rat	IHC: mouse brain tissue, rat brain tissue
Cited Species: human, mouse, rat	IF/ICC: U2OS cells,
Note-IHC: suggested antigen retrieval with TE buffer pH 9.0; (*) Alternatively, antigen retrieval may be performed with citrate buffer pH 6.0	

Background Information

CRMP1 (Collapsin response mediator protein 1) is also named as DPYSL1, ULIP3, DRP-1 and belongs to the collapsin response mediator protein family, which are a family of five cytoplasmic proteins predominantly expressed in the developing nervous system. CRMP1, the predicted 62-kDa protein and its 75-kDa isoform corresponding to its N-terminal splice variant already described for embryonic, neonatal, and adult brain of the rat are evidenced in the cortex of adult mouse (PMID:15834957). This protein is involved in invasion, and aggressiveness of prolactin pituitary tumors.

Notable Publications

Author	Pubmed ID	Journal	Application
Wenyou Zhang	36144658	Molecules	WB
Fengliang Wang	28849216	Mol Med Rep	
Jie Yang	35940284	Chem Biol Interact	WB

Storage

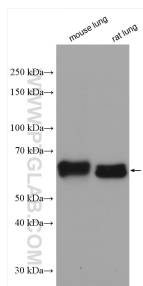
Storage:
Store at -20°C. Stable for one year after shipment.
Storage Buffer:
PBS with 0.02% sodium azide and 50% glycerol, pH7.3
Aliquoting is unnecessary for -20°C storage

*** 20ul sizes contain 0.1% BSA

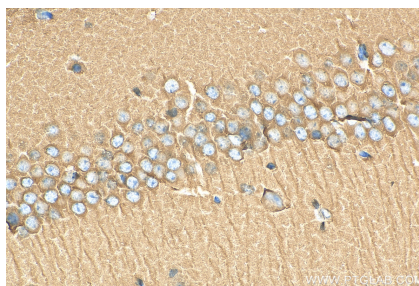
For technical support and original validation data for this product please contact:
T: 1 (888) 4PTGLAB (1-888-478-4522) (toll free in USA), or 1(312) 455-8498 (outside USA)
E: proteintech@ptglab.com
W: ptglab.com

This product is exclusively available under Proteintech Group brand and is not available to purchase from any other manufacturer.

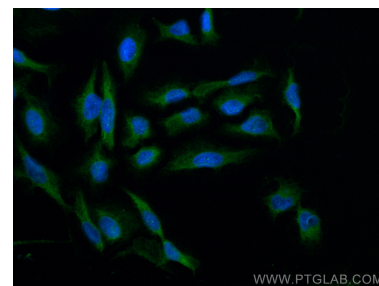
Selected Validation Data



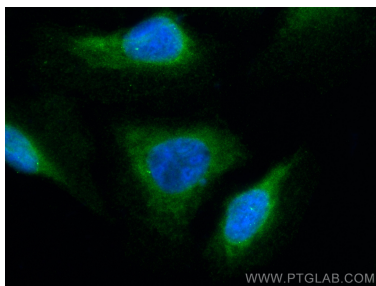
Various lysates were subjected to SDS PAGE followed by western blot with 10317-1-AP (CRMP1 antibody) at dilution of 1:2000 incubated at room temperature for 1.5 hours.



Immunohistochemical analysis of paraffin-embedded mouse brain tissue slide using 10317-1-AP (CRMP1 antibody) at dilution of 1:200 (under 40x lens). Heat mediated antigen retrieval with Tris-EDTA buffer (pH 9.0).



Immunofluorescent analysis of (-20°C Methanol) fixed U2OS cells using CRMP1 antibody (10317-1-AP) at dilution of 1:400 and CoraLite®488-Conjugated Goat Anti-Rabbit IgG(H+L).



Immunofluorescent analysis of (-20°C Methanol) fixed U2OS cells using CRMP1 antibody (10317-1-AP) at dilution of 1:400 and CoraLite®488-Conjugated Goat Anti-Rabbit IgG(H+L).