

U2AF35 Polyclonal ANTIBODY

Catalog Number: 10334-1-AP

Featured Product

7 Publications

Basic Information

Catalog Number:
10334-1-AP

Size:
28 µg/150 µl

Source:
Rabbit

Isotype:
IgG

Purification Method:
Antigen affinity purification

Immunogen Catalog Number:
AG0399

GenBank Accession Number:
BC001923

GeneID (NCBI):
7307

Full Name:
U2 small nuclear RNA auxiliary factor 1

Calculated MW:
28 kDa

Observed MW:
35 kDa

Recommended Dilutions:

WB : 1:500-1:2000

IP : 0.5-4.0 µg for IP and 1:500-1:1000 for WB

IHC : 1:20-1:200

Applications

Tested Applications:

IHC, IP, WB, ELISA

Cited Applications:

WB

Species Specificity:

human,mouse,rat

Cited Species:

human

Note: suggested antigen retrieval with TE buffer pH 9.0; (*) Alternatively, antigen retrieval may be performed with citrate buffer pH 6.0

Positive Controls:

WB : COLO 320 cells; HeLa cells

IP : HeLa cells;

IHC : human prostate cancer tissue;

Background Information

U2 auxiliary factor (U2AF), comprising a large and a small subunit, is a non-snRNP protein required for the binding of U2 snRNP to the pre-mRNA branch site. U2 (RNU2) small nuclear RNA auxiliary factor 1 (U2AF1, synonyms: RN, FP793, U2AF35, U2AFBP, RNU2AF1) is the small subunit which plays a critical role in both constitutive and enhancer-dependent RNA splicing by directly mediating interactions between the large subunit and proteins bound to the enhancers. The U2AF1 gene is localized to chromosome 21q22.3, which is the critical region for three diseases, progressive myoclonus epilepsy, autoimmune polyglandular disease type 1, and one form of bipolar affective disorder.

Notable Publications

Author	Pubmed ID	Journal	Application
Jana Kralovicova	20628762	Hum Genet	WB
Sung M Park	27184077	Mbl Cell	WB
Jana Královicová	29788428	Nucleic Acids Res	WB

Storage

Storage:

Store at -20°C. Stable for one year after shipment.

Storage Buffer:

PBS with 0.1% sodium azide and 50% glycerol pH 7.3.

Aliquoting is unnecessary for -20°C storage

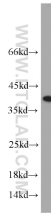
For technical support and original validation data for this product please contact:

T: 1 (888) 4PTGLAB (1-888-478-4522) (toll free in USA), or 1(312) 455-8498 (outside USA)

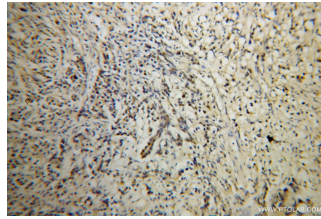
E: proteintech@ptglab.com
W: ptglab.com

This product is exclusively available under Proteintech Group brand and is not available to purchase from any other manufacturer.

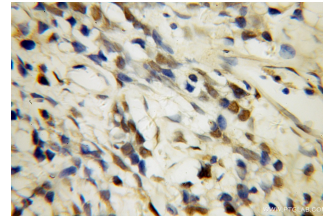
Selected Validation Data



COLO 320 cells were subjected to SDS PAGE followed by western blot with 10334-1-AP(U2AF35 antibody) at dilution of 1:1000 incubated at room temperature for 1.5 hours



Immunohistochemical analysis of paraffin-embedded human prostate cancer using 10334-1-AP(U2AF35 antibody) at dilution of 1:100 (under 10x lens)



Immunohistochemical analysis of paraffin-embedded human prostate cancer using 10334-1-AP(U2AF35 antibody) at dilution of 1:100 (under 40x lens)