

For Research Use Only

MAD2L1 Polyclonal antibody

Catalog Number: 10337-1-AP

Featured Product

31 Publications



Basic Information

Catalog Number:

10337-1-AP

Size:

150ul, Concentration: 300 ug/ml by Nanodrop and 207 ug/ml by Bradford method using BSA as the standard;

Source:

Rabbit

Isotype:

IgG

Immunogen Catalog Number:

AG0307

GenBank Accession Number:

BC000356

GeneID (NCBI):

4085

UNIPROT ID:

Q13257

Full Name:

MAD2 mitotic arrest deficient-like 1 (yeast)

Calculated MW:

24 kDa

Observed MW:

25-30 kDa

Purification Method:

Antigen affinity purification

Recommended Dilutions:

WB: 1:500-1:1000

IP: 0.5-4.0 ug for 1.0-3.0 mg of total protein lysate

IHC: 1:500-1:2000

IF/ICC: 1:200-1:800

Applications

Tested Applications:

WB, IHC, IF/ICC, IP, ELISA

Cited Applications:

WB, IHC, IF

Species Specificity:

human, mouse, rat

Cited Species:

human, mouse

Note-IHC: suggested antigen retrieval with TE buffer pH 9.0; (*) Alternatively, antigen retrieval may be performed with citrate buffer pH 6.0

Positive Controls:

WB: Daudi cells, rat liver tissue, HEK-293 cells, HepG2 cells, Raji cells, THP-1 cells, HeLa cells

IP: HEK-293 cells,

IHC: mouse ovary tissue, human liver cancer tissue, human ovary tumor tissue

IF/ICC: HepG2 cells, HEK-293 cells

Background Information

MAD2 mitotic arrest deficient-like 1 (yeast) (MAD2L1, synonyms: MAD2, HSMAD2) is a component of the mitotic spindle assembly checkpoint that prevents the onset of anaphase until all chromosomes are properly aligned at the metaphase plate. MAD2L1 is localized to human chromosome band 5q23.3 by in situ hybridization.

Notable Publications

Author	Pubmed ID	Journal	Application
Fan Chen	30195030	Exp Cell Res	WB
Xinran Liu	25269478	Cancer Res	
Jieyuan Wu	24638265	Biometals	WB

Storage

Storage:

Store at -20°C. Stable for one year after shipment.

Storage Buffer:

PBS with 0.02% sodium azide and 50% glycerol, pH7.3

Aliquoting is unnecessary for -20°C storage

*** 20ul sizes contain 0.1% BSA

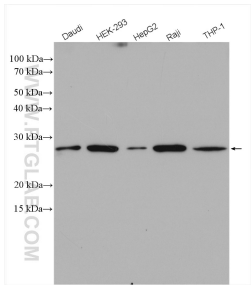
For technical support and original validation data for this product please contact:

T: 1 (888) 4PTGLAB (1-888-478-4522) (toll free in USA), or 1(312) 455-8498 (outside USA)

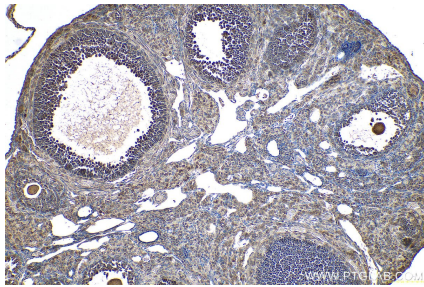
E: proteintech@ptglab.com
W: ptglab.com

This product is exclusively available under Proteintech Group brand and is not available to purchase from any other manufacturer.

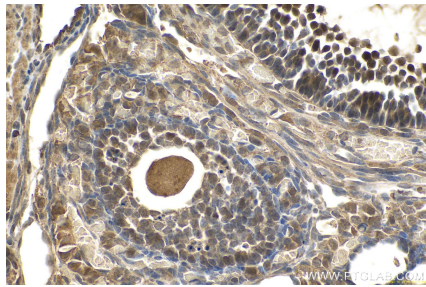
Selected Validation Data



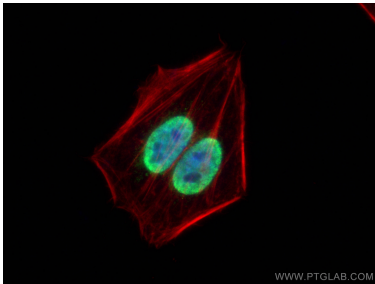
Various lysates were subjected to SDS PAGE followed by western blot with 10337-1-AP (MAD2L1 antibody) at dilution of 1:800 incubated at room temperature for 1.5 hours.



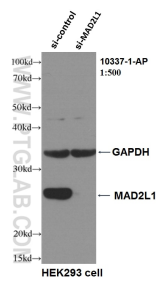
Immunohistochemical analysis of paraffin-embedded mouse ovary tissue slide using 10337-1-AP (MAD2L1 antibody) at dilution of 1:1000 (under 10x lens). Heat mediated antigen retrieval with Tris-EDTA buffer (pH 9.0).



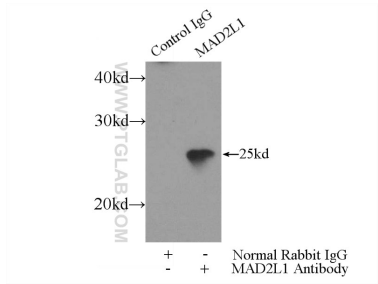
Immunohistochemical analysis of paraffin-embedded mouse ovary tissue slide using 10337-1-AP (MAD2L1 antibody) at dilution of 1:1000 (under 40x lens). Heat mediated antigen retrieval with Tris-EDTA buffer (pH 9.0).



Immunofluorescent analysis of (4% PFA) fixed HepG2 cells using MAD2L1 antibody (10337-1-AP) at dilution of 1:400 and CoraLite®488-Conjugated AffiniPure Goat Anti-Rabbit IgG(H+L), CL594-Phalloidin (red).



WB result of MAD2L1 antibody (10337-1-AP, 1:500) with si-control and si-MAD2L1 transfected HEK293 cells.



IP result of anti-MAD2L1 (IP:10337-1-AP, 3ug; Detection:10337-1-AP 1:500) with HEK-293 cells lysate 1800ug.