

For Research Use Only

# RAB4A Polyclonal antibody

Catalog Number: 10347-1-AP

6 Publications



## Basic Information

### Catalog Number:

10347-1-AP

### Size:

150ul, Concentration: 230 ug/ml by Nanodrop and 200 ug/ml by Bradford method using BSA as the standard;

### Source:

Rabbit

### Isotype:

IgG

### Immunogen Catalog Number:

AG0357

### GenBank Accession Number:

BC002438

### GeneID (NCBI):

5867

### UNIPROT ID:

P20338

### Full Name:

RAB4A, member RAS oncogene family

### Calculated MW:

24 kDa

### Observed MW:

24-28 kDa

### Purification Method:

Antigen affinity purification

### Recommended Dilutions:

WB: 1:500-1:2000

IHC: 1:50-1:500

IF/ICC: 1:50-1:500

## Applications

### Tested Applications:

WB, IHC, IF/ICC, ELISA

### Cited Applications:

WB, IF

### Species Specificity:

human, mouse, rat

### Cited Species:

human, mouse

**Note-IHC: suggested antigen retrieval with TE buffer pH 9.0; (\*) Alternatively, antigen retrieval may be performed with citrate buffer pH 6.0**

### Positive Controls:

**WB** : HEK-293T cells, mouse brain tissue, rat brain tissue, HeLa cells, Neuro-2a cells, PC-12 cells

**IHC** : human heart tissue,

**IF/ICC** : HeLa cells,

## Background Information

The human RAB genes share structural and biochemical properties with the Ras gene superfamily, and RAB4 (synonym: RAB4A) is a small GTPase belonging to this Ras superfamily. Accumulating data suggests an important role for RAB proteins either in endocytosis or in biosynthetic protein transport. The transport of newly synthesized proteins from endoplasmic reticulum to the Golgi complex and to secretory vesicles involves the movement of carrier vesicles, a process that appears to involve RAB protein function. RAB4 may also function as regulator along the receptor recycling pathway.

## Notable Publications

Author	Pubmed ID	Journal	Application
Kobina Essandoh	30884248	FASEB J	WB
Tian-Wei Chen	31175290	Nat Commun	
Michael G Connor	29463656	MBio	IF

## Storage

### Storage:

Store at -20°C. Stable for one year after shipment.

### Storage Buffer:

PBS with 0.02% sodium azide and 50% glycerol, pH7.3

Aliquoting is unnecessary for -20°C storage

\*\*\* 20ul sizes contain 0.1% BSA

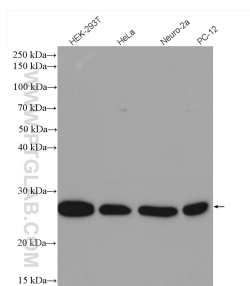
For technical support and original validation data for this product please contact:

T: 1 (888) 4PTGLAB (1-888-478-4522) (toll free in USA), or 1(312) 455-8498 (outside USA)

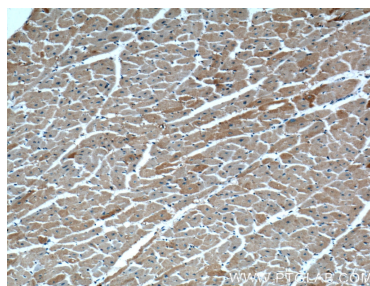
E: [proteintech@ptglab.com](mailto:proteintech@ptglab.com)  
W: [ptglab.com](http://ptglab.com)

This product is exclusively available under Proteintech Group brand and is not available to purchase from any other manufacturer.

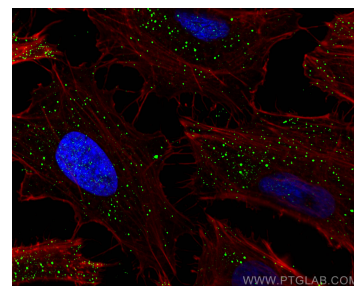
## Selected Validation Data



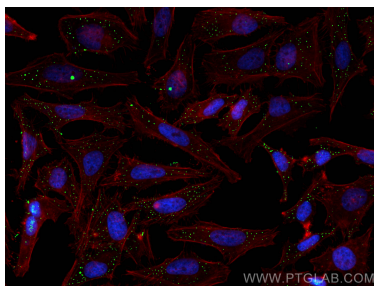
Various lysates were subjected to SDS PAGE followed by western blot with 10347-1-AP (RAB4A antibody) at dilution of 1:1000 incubated at room temperature for 1.5 hours.



Immunohistochemical analysis of paraffin-embedded human heart tissue slide using 10347-1-AP (RAB4A Antibody) at dilution of 1:200 (under 10x lens).



Immunofluorescent analysis of (4% PFA) fixed HeLa cells using RAB4A antibody (10347-1-AP) at dilution of 1:200 and Coralite®488-Conjugated Goat Anti-Rabbit IgG(H+L).



Immunofluorescent analysis of (4% PFA) fixed HeLa cells using RAB4A antibody (10347-1-AP) at dilution of 1:200 and Coralite®488-Conjugated Goat Anti-Rabbit IgG(H+L), CL594-Phalloidin (red).