

For Research Use Only

# RFC2 Polyclonal antibody

Catalog Number: 10410-1-AP **2 Publications**



## Basic Information

**Catalog Number:**

10410-1-AP

**Size:**

150ul , Concentration: 240 µg/ml by Nanodrop and 153 µg/ml by Bradford method using BSA as the standard;

**Source:**

Rabbit

**Isotype:**

IgG

**Immunogen Catalog Number:**

AG0663

**GenBank Accession Number:**

BC002813

**GeneID (NCBI):**

5982

**Full Name:**

replication factor C (activator 1) 2, 40kDa

**Calculated MW:**

40 kDa

**Observed MW:**

35-40 kDa

**Purification Method:**

Antigen affinity purification

**Recommended Dilutions:**

WB 1:500-1:1000  
IP 0.5-4.0 ug for IP and 1:500-1:1000 for WB  
IF 1:50-1:500

## Applications

**Tested Applications:**

IF, IP, WB, ELISA

**Cited Applications:**

WB

**Species Specificity:**

human, mouse, rat

**Cited Species:**

mouse

**Positive Controls:**

WB : HeLa cells, MCF-7 cells, Raji cells

IP : HeLa cells,

IF : HeLa cells,

## Background Information

RFC2, also named as RFC40, belongs to the activator 1 small subunits family. It is a 40kd Activator 1 subunit. It binds ATP. The elongation of primed DNA templates by DNA polymerase delta and epsilon requires the action of the accessory proteins proliferating cell nuclear antigen (PCNA) and activator 1. RFC2 is a constitutively expressed protein essential for both DNA repair and replication. (PMID: 20660762).

## Notable Publications

Author	Pubmed ID	Journal	Application
Caron Etienne E	21952136	Mol Syst Biol	WB
Chiang Po-Min PM	20660762	Proc Natl Acad Sci U S A	WB

## Storage

**Storage:**

Store at -20°C. Stable for one year after shipment.

**Storage Buffer:**

PBS with 0.02% sodium azide and 50% glycerol pH 7.3.

Aliquoting is unnecessary for -20°C storage

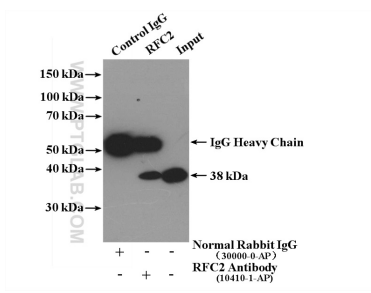
For technical support and original validation data for this product please contact:

T: 1 (888) 4PTGLAB (1-888-478-4522) (toll free in USA), or 1(312) 455-8498 (outside USA)

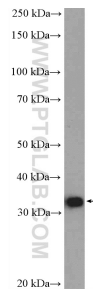
E: proteintech@ptglab.com  
W: ptglab.com

**This product is exclusively available under Proteintech Group brand and is not available to purchase from any other manufacturer.**

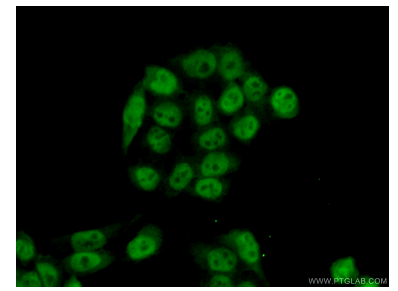
## Selected Validation Data



IP result of anti-RFC2 (IP:10410-1-AP, 4 $\mu$ g; Detection:10410-1-AP 1:500) with HeLa cells lysate 3000  $\mu$ g.



HeLa cells were subjected to SDS PAGE followed by western blot with 10410-1-AP (RFC2 Antibody) at dilution of 1:600 incubated at room temperature for 1.5 hours.



Immunofluorescent analysis of (10% Formaldehyde) fixed HeLa cells using 10410-1-AP (RFC2 antibody) at dilution of 1:50 and Alexa Fluor 488-conjugated AffiniPure Goat Anti-Rabbit IgG(H+L).