

For Research Use Only

# RPA2 Polyclonal antibody

Catalog Number: 10412-1-AP

22 Publications



## Basic Information

### Catalog Number:

10412-1-AP

### Size:

150ul, Concentration: 600 ug/ml by Nanodrop;

### Source:

Rabbit

### Isotype:

IgG

### Immunogen Catalog Number:

AG0690

### GenBank Accession Number:

BC001630

### GeneID (NCBI):

6118

### UNIPROT ID:

P15927

### Full Name:

replication protein A2, 32kDa

### Calculated MW:

29 kDa

### Observed MW:

32 kDa

### Purification Method:

Antigen affinity purification

### Recommended Dilutions:

WB: 1:1000-1:6000

IP: 0.5-4.0 ug for 1.0-3.0 mg of total protein lysate

IHC: 1:20-1:200

IF/ICC: 1:50-1:500

## Applications

### Tested Applications:

WB, IHC, IF/ICC, IP, ELISA

### Cited Applications:

WB, IHC, IF, IP, ChIP

### Species Specificity:

human, mouse, rat

### Cited Species:

human, mouse

### Positive Controls:

WB: HEK-293 cells, mouse brain tissue, HeLa cells, SH-SY5Y cells

IP: mouse kidney tissue,

IHC: human gliomas tissue,

IF/ICC: A431 cells,

**Note-IHC: suggested antigen retrieval with TE buffer pH 9.0; (\*) Alternatively, antigen retrieval may be performed with citrate buffer pH 6.0**

## Background Information

RPA2, a subunit of the heterotrimeric replication protein A (RPA) complex, is overexpressed in various cancers. RPA2 is a major target for upstream kinases, including CDKs and the three PIKKs (ATR, ataxia-telangiectasia mutated [ATM], and DNA-PK). RPA2 comprises multiple critical Ser/Tr residues that are phosphorylated in sequential order in response to genotoxic stress.

## Notable Publications

Author	Pubmed ID	Journal	Application
Tao Zhang	36050397	Nat Commun	WB
Jiao Zhao	35597237	Mol Cell	WB
Yushan Li	35341968	J Genet Genomics	IF

## Storage

### Storage:

Store at -20°C. Stable for one year after shipment.

### Storage Buffer:

PBS with 0.02% sodium azide and 50% glycerol, pH7.3

Aliquoting is unnecessary for -20°C storage

\*\*\* 20ul sizes contain 0.1% BSA

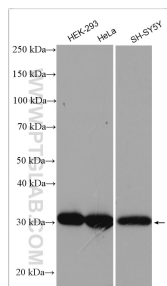
For technical support and original validation data for this product please contact:

T: 1 (888) 4PTGLAB (1-888-478-4522) (toll free in USA), or 1(312) 455-8498 (outside USA)

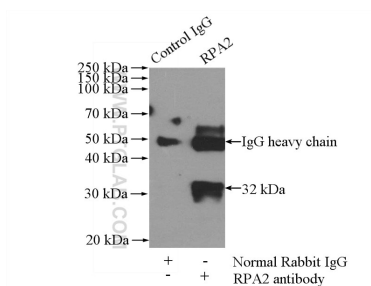
E: [proteintech@ptglab.com](mailto:proteintech@ptglab.com)  
W: [ptglab.com](http://ptglab.com)

This product is exclusively available under Proteintech Group brand and is not available to purchase from any other manufacturer.

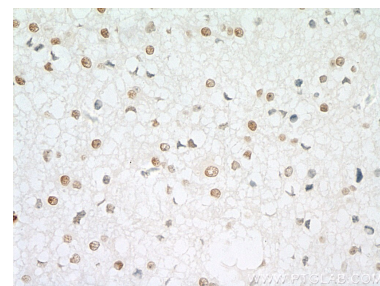
## Selected Validation Data



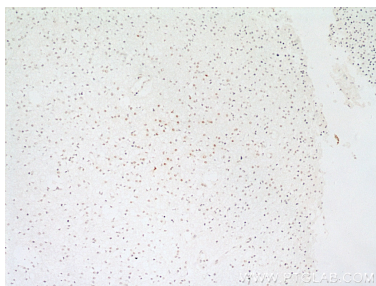
Various lysates were subjected to SDS PAGE followed by western blot with 10412-1-Ap (RPA2 antibody) at dilution of 1:3000 incubated at room temperature for 1.5 hours.



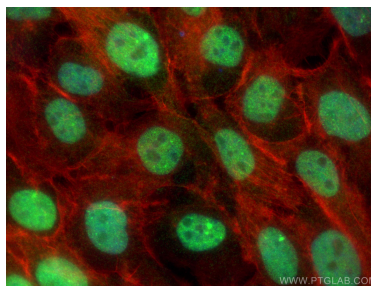
IP result of anti-RPA2 (IP:10412-1-Ap, 4 $\mu$ g; Detection:10412-1-Ap 1:1000) with mouse kidney tissue lysate 4000 $\mu$ g.



Immunohistochemical analysis of paraffin-embedded human gliomas tissue slide using 10412-1-Ap (RPA2 antibody) at dilution of 1:100 (under 40x lens)..



Immunohistochemical analysis of paraffin-embedded human gliomas tissue slide using 10412-1-Ap (RPA2 antibody) at dilution of 1:100 (under 10x lens)..



Immunofluorescent analysis of (4% PFA) fixed A431 cells using RPA2 antibody (10412-1-Ap) at dilution of 1:200 and CoraLite®488-Conjugated AffiniPure Goat Anti-Rabbit IgG(H+L), CL594-phalloidin (red).