

For Research Use Only

# SLC25A3 Polyclonal antibody

Catalog Number: 10420-1-AP

Featured Product

7 Publications



## Basic Information

### Catalog Number:

10420-1-AP

### Size:

150ul, Concentration: 500 ug/ml by Nanodrop;

### Source:

Rabbit

### Isotype:

IgG

### Immunogen Catalog Number:

AG0667

### GenBank Accession Number:

BC003504

### GeneID (NCBI):

5250

### UNIPROT ID:

Q00325

### Full Name:

solute carrier family 25 (mitochondrial carrier; phosphate carrier), member 3

### Calculated MW:

40 kDa

### Observed MW:

40-43 kDa

### Purification Method:

Antigen affinity purification

### Recommended Dilutions:

WB: 1:500-1:3000

IHC: 1:50-1:500

## Applications

### Tested Applications:

WB, IHC, ELISA

### Cited Applications:

WB, IHC, IF, IP

### Species Specificity:

human, rat

### Cited Species:

human, mouse

### Positive Controls:

WB: HEK-293 cells, HepG2 cells, HeLa cells, MOLT-4 cells, PC-12 cells

IHC: human lung cancer tissue, rat liver tissue

**Note-IHC: suggested antigen retrieval with TE buffer pH 9.0; (\*) Alternatively, antigen retrieval may be performed with citrate buffer pH 6.0**

## Background Information

The mitochondrial phosphate carrier SLC25A3 belongs to the SLC25 family, which is the largest family of solute carriers. SLC25A3 encodes the phosphate carrier PiC that catalyses the import of phosphate into mitochondria where it is needed for ATP synthesis. SLC25A3 has two isoforms SLC25A3-A (a heart-type isoform) and SLC25A3-B (a liver-type isoform) as a result of alternative splicing of exon 3. It has been reported that SLC25A3 mutations are associated with mitochondrial phosphate carrier deficiency, respiratory distress and hypertrophic cardiomyopathy. (PMID: 15984930, 27780865, 20877624)

## Notable Publications

Author	Pubmed ID	Journal	Application
Shihua Gao	40089548	Sci Rep	WB
Varadarajan Sudhahar	39975331	bioRxiv	WB,IP,IF
Shuang Li	39671292	Cell Rep	WB

## Storage

### Storage:

Store at -20°C. Stable for one year after shipment.

### Storage Buffer:

PBS with 0.02% sodium azide and 50% glycerol, pH7.3

Aliquoting is unnecessary for -20°C storage

\*\*\* 20ul sizes contain 0.1% BSA

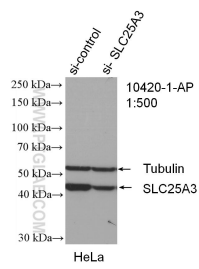
For technical support and original validation data for this product please contact:

T: 1 (888) 4PTGLAB (1-888-478-4522) (toll free in USA), or 1(312) 455-8498 (outside USA)

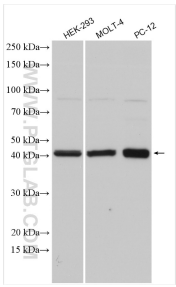
E: [proteintech@ptglab.com](mailto:proteintech@ptglab.com)  
W: [ptglab.com](http://ptglab.com)

This product is exclusively available under Proteintech Group brand and is not available to purchase from any other manufacturer.

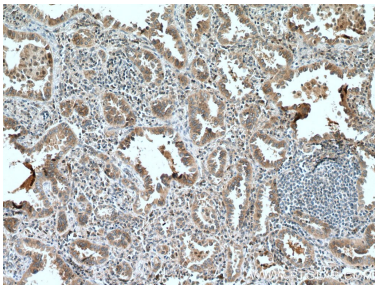
Selected Validation Data



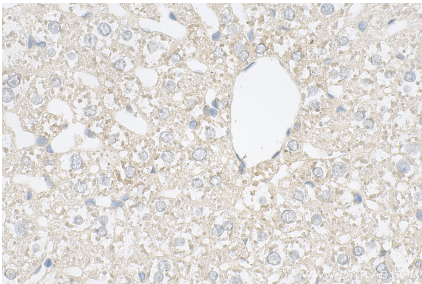
WB result of SLC25A3 antibody (10420-1-AP; 1:500; incubated at room temperature for 1.5 hours) with sh-Control and sh-SLC25A3 transfected HeLa cells.



Various lysates were subjected to SDS PAGE followed by western blot with 10420-1-AP (SLC25A3 antibody) at dilution of 1:1500 incubated at room temperature for 1.5 hours.



Immunohistochemical analysis of paraffin-embedded human lung cancer tissue slide using 10420-1-AP (SLC25A3 antibody) at dilution of 1:200 (under 10x lens. Heat mediated antigen retrieval with Tris-EDTA buffer (pH 9.0).



Immunohistochemical analysis of paraffin-embedded rat liver tissue slide using 10420-1-AP (SLC25A3 antibody) at dilution of 1:200 (under 40x lens). Heat mediated antigen retrieval with Tris-EDTA buffer (pH 9.0).