

For Research Use Only

JTV1 Polyclonal ANTIBODY



Catalog Number: 10424-1-AP

Featured Product

15 Publications

Basic Information

Catalog Number:

10424-1-AP

Size:

150UL, Concentration: 353 µg/ml by Bradford method using BSA as the standard;

Source:

Rabbit

Isotype:

IgG

Immunogen Catalog Number:

AG0675

GenBank Accession Number:

BC002853

GeneID (NCBI):

7965

Full Name:

JTV1 gene

Calculated MW:

36 kDa

Observed MW:

36 kDa

Purification Method:

Antigen affinity purification

Recommended Dilutions:

WB 1:500-1:1000

IP 0.5-4.0 µg for IP and 1:500-1:2000 for WB

IHC 1:20-1:200

IF 1:10-1:100

Applications

Tested Applications:

IF, IHC, IP, WB, ELISA

Cited Applications:

IF, WB

Species Specificity:

human, mouse, rat

Cited Species:

human, mouse, rat

Note-IHC: suggested antigen retrieval with TE buffer pH 9.0; (*) Alternatively, antigen retrieval may be performed with citrate buffer pH 6.0

Positive Controls:

WB: HeLa cells, mouse liver tissue, K-562 cells, rat liver tissue, HepG2 cells, NIH/3T3 cells, L02 cells

IP: HeLa cells,

IHC: human testis tissue, human cerebellum tissue, human kidney tissue

IF: HeLa cells, HepG2 cells

Background Information

JTV1, also named p38, AIMP2, was first known as a factor associated with macromolecular protein complex, which consists several different aminoacyl-tRNA synthetases. JTV1 is a scaffold protein required for the assembly and stability of the multi-tRNA synthetase complex. JTV1 could act as a mediator of TGF-beta signaling and its functional importance in the control of MYC during lung differentiation. Blocks MDM2-mediated ubiquitination and degradation of p53/TP53. Functions as a proapoptotic factor. This is a rabbit polyclonal antibody raised against full-length of JTV1.

Notable Publications

Author	Pubmed ID	Journal	Application
Ko Han Seok HS	20823226	Proc Natl Acad Sci U S A	WB
Hyojung Kim	28972555	Int J Mol Sci	WB
Rin Khang	25779963	Neuroscience	WB

Storage

Storage:

Store at -20°C. Stable for one year after shipment.

Storage Buffer:

PBS with 0.1% sodium azide and 50% glycerol pH 7.3.

Aliquoting is unnecessary for -20°C storage

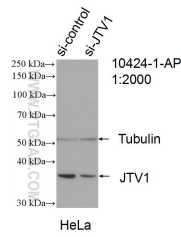
For technical support and original validation data for this product please contact:

T: 1 (888) 4PTGLAB (1-888-478-4522) (toll free in USA), or 1(312) 455-8498 (outside USA)

E: proteintech@ptglab.com
W: ptglab.com

This product is exclusively available under Proteintech Group brand and is not available to purchase from any other manufacturer.

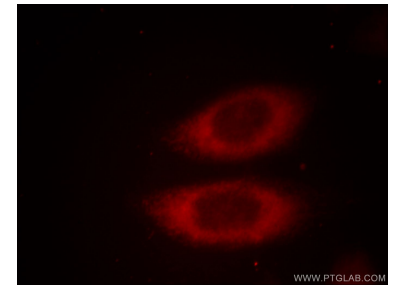
Selected Validation Data



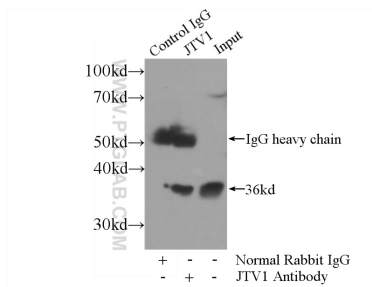
WB result of JTV1 antibody (10424-1-AP; 1:2000; incubated at room temperature for 1.5 hours) with sh-Control and sh-JTV1 transfected HeLa cells.



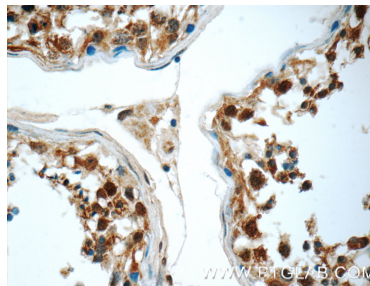
HeLa cells were subjected to SDS PAGE followed by western blot with 10424-1-AP (JTV1 antibody) at dilution of 1:1000 incubated at room temperature for 1.5 hours.



Immunofluorescent analysis of HeLa cells, using JTV1 antibody 10424-1-AP at 1:25 dilution and Rhodamine-labeled goat anti-rabbit IgG (red).



IP Result of anti-JTV1 (IP:10424-1-AP, 3ug; Detection:10424-1-AP 1:1000) with HeLa cells lysate 800ug.



Immunohistochemical analysis of paraffin-embedded human testis tissue slide using 10424-1-AP (JTV1 Antibody) at dilution of 1:50 (under 40x lens).