

For Research Use Only

SMAD1 Polyclonal antibody

Catalog Number: 10429-1-AP **8 Publications**



Basic Information

Catalog Number:

10429-1-AP

Size:

150UL, Concentration: 420 µg/ml by Bradford method using BSA as the standard;

Source:

Rabbit

Isotype:

IgG

Immunogen Catalog Number:

AG0701

GenBank Accession Number:

BC001878

GeneID (NCBI):

4086

Full Name:

SMAD family member 1

Calculated MW:

52 kDa

Observed MW:

52 kDa

Purification Method:

Antigen affinity purification

Recommended Dilutions:

WB 1:500-1:1000

IP 0.5-4.0 µg for IP and 1:500-1:1000 for WB

IF 1:10-1:100

Applications

Tested Applications:

IF, IP, WB, ELISA

Cited Applications:

WB

Species Specificity:

human, mouse, rat

Cited Species:

mouse

Positive Controls:

WB: HepG2 cells, HeLa cells, mouse heart tissue

IP: mouse heart tissue,

IF: HeLa cells, HepG2 cells

Background Information

Transforming growth factor- β (TGF- β) superfamily is recognized as one of the largest families of secreted multifunctional peptides exerting different biological effects on a large variety of cell types, such as regulation of hormone secretion, stimulation of extracellular matrix formation, the inhibition of proliferation of many cell types, cell survival, bone formation, and chemotaxis for inflammatory cells. One of the most important proteins that modulate TGF- β ligand activity is the SMAD family proteins. SMAD1 is one of the receptor-activated Smads. It's also a signal transducers of BMP signaling and binds to several proteins involved in ubiquitin-proteasome system (UPS). Transcriptional modulator activated by BMP (bone morphogenetic proteins) type 1 receptor kinase

Notable Publications

Author	Pubmed ID	Journal	Application
Xueni Wang	32879393	Sci Rep	WB
Tianda Chen	27752241	Front Mol Neurosci	WB
Yuhai Chen	30487798	Front Immunol	WB

Storage

Storage:

Store at -20°C. Stable for one year after shipment.

Storage Buffer:

PBS with 0.1% sodium azide and 50% glycerol pH 7.3.

Aliquoting is unnecessary for -20°C storage

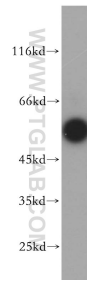
For technical support and original validation data for this product please contact:

T: 1 (888) 4PTGLAB (1-888-478-4522) (toll free in USA), or 1(312) 455-8498 (outside USA)

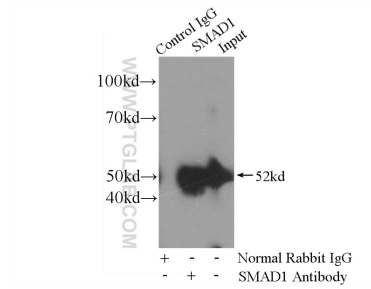
E: proteintech@ptglab.com
W: ptglab.com

This product is exclusively available under Proteintech Group brand and is not available to purchase from any other manufacturer.

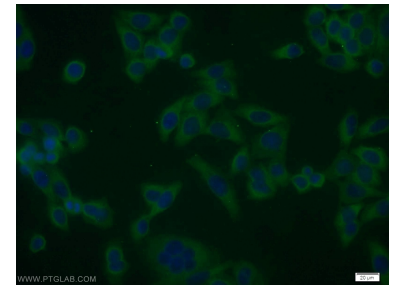
Selected Validation Data



HepG2 cells were subjected to SDS PAGE followed by western blot with 10429-1-AP (SMAD1 antibody) at dilution of 1:300 incubated at room temperature for 1.5 hours.



IP Result of anti-SMAD1 (IP:10429-1-AP, 4ug; Detection:10429-1-AP 1:500) with mouse heart tissue lysate 8000ug.



Immunofluorescent analysis of HeLa cells using 10429-1-AP (SMAD1 antibody) at dilution of 1:25 and Alexa Fluor 488-conjugated AffiniPure Goat Anti-Rabbit IgG(H+L).