

For Research Use Only

Connexin-32 Polyclonal antibody



Catalog Number: 10450-1-AP

6 Publications

Basic Information

Catalog Number:

10450-1-AP

Size:

150ul , Concentration: 133 µg/ml by Nanodrop and 133 µg/ml by Bradford method using BSA as the standard;

Source:

Rabbit

Isotype:

IgG

Immunogen Catalog Number:

AG0659

GenBank Accession Number:

BC002805

GeneID (NCBI):

2705

Full Name:

gap junction protein, beta 1, 32kDa

Calculated MW:

32 kDa

Observed MW:

32 kDa

Purification Method:

Antigen affinity purification

Recommended Dilutions:

WB 1:200-1:1000

IP 0.5-4.0 ug for IP and 1:200-1:1000 for WB

IHC 1:20-1:200

Applications

Tested Applications:

IHC, IP, WB, ELISA

Cited Applications:

IF, IHC, WB

Species Specificity:

human, mouse

Cited Species:

human, mouse

Note-IHC: suggested antigen retrieval with TE buffer pH 9.0; (*) Alternatively, antigen retrieval may be performed with citrate buffer pH 6.0

Positive Controls:

WB : mouse brain tissue, A375 cells, human liver tissue, mouse skin tissue

IP : mouse brain tissue,

IHC : human colon cancer tissue,

Background Information

Connexin-32 (Cx32), also known as Gap junction beta 1 protein (GJB1), belongs to the connexin family. Connexins are membrane-spanning proteins that assemble to form gap junction channels that facilitate the transfer of ions and small molecules between cells. Connexin-32 is the major gap junction protein of liver, and the expression is also found in brain and other organs. It is involved in tumorigenesis and liver regeneration. Connexin-32 plays an important role in peripheral nerve. Defects in Connexin-32 are the cause of Charcot-Marie-Tooth disease X-linked type 1 (CMTX1), an inherited peripheral neuropathy. (PMID: 8266101; 8613761; 8608591; 19265674)

Notable Publications

Author	Pubmed ID	Journal	Application
Nakase Taizen T	19794823	J Biomed Biotechnol	IHC
Wen-Qun Zhong	25270527	Histopathology	IHC, IF
Yi Sha S	23162640	Oncol Lett	WB

Storage

Storage:

Store at -20°C. Stable for one year after shipment.

Storage Buffer:

PBS with 0.02% sodium azide and 50% glycerol pH 7.3.

Aliquoting is unnecessary for -20°C storage

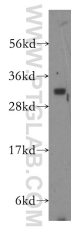
For technical support and original validation data for this product please contact:

T: 1 (888) 4PTGLAB (1-888-478-4522) (toll free in USA), or 1(312) 455-8498 (outside USA)

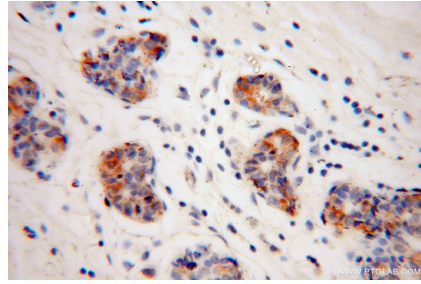
E: proteintech@ptglab.com
W: ptglab.com

This product is exclusively available under Proteintech Group brand and is not available to purchase from any other manufacturer.

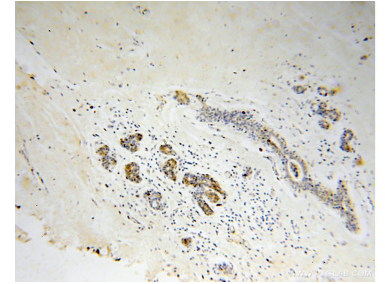
Selected Validation Data



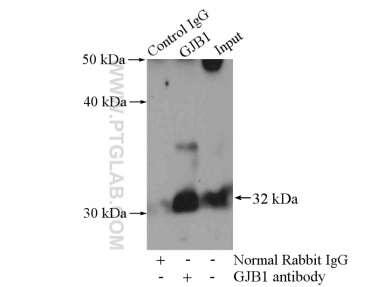
mouse brain tissue were subjected to SDS PAGE followed by western blot with 10450-1-AP (GJB1 antibody) at dilution of 1:300 incubated at room temperature for 1.5 hours.



Immunohistochemical analysis of paraffin-embedded human colon cancer using 10450-1-AP (GJB1 antibody) at dilution of 1:50 (under 40x lens).



Immunohistochemical analysis of paraffin-embedded human colon cancer using 10450-1-AP (GJB1 antibody) at dilution of 1:50 (under 10x lens).



IP Result of anti-Connexin-32 (IP:10450-1-AP, 4ug; Detection:10450-1-AP 1:300) with mouse brain tissue lysate 4000ug.