

For Research Use Only

# MBP Polyclonal antibody

Catalog Number: 10458-1-AP **126 Publications**



## Basic Information

<b>Catalog Number:</b> 10458-1-AP	<b>GenBank Accession Number:</b> BC008749	<b>Purification Method:</b> Antigen affinity purification
<b>Size:</b> 150ul , Concentration: 750 ug/ml by Nanodrop;	<b>GeneID (NCBI):</b> 4155	<b>Recommended Dilutions:</b> WB: 1:2000-1:16000
<b>Source:</b> Rabbit	<b>UNIPROT ID:</b> P02686	<b>IHC:</b> 1:50-1:500
<b>Isotype:</b> IgG	<b>Full Name:</b> myelin basic protein	<b>IF-P:</b> 1:50-1:500
<b>Immunogen Catalog Number:</b> AG0713	<b>Calculated MW:</b> 33 kDa	<b>IF-Fro:</b> 1:50-1:500
	<b>Observed MW:</b> 14-23 kDa	

## Applications

<b>Tested Applications:</b> WB, IHC, IF-P, IF-Fro, ELISA	<b>Positive Controls:</b> WB : mouse brain tissue, rat brain tissue
<b>Cited Applications:</b> WB, IHC, IF	<b>IHC :</b> mouse brain tissue,
<b>Species Specificity:</b> human, mouse, rat	<b>IF-P :</b> mouse brain tissue,
<b>Cited Species:</b> human, mouse, rat, pig, rabbit	<b>IF-Fro :</b> mouse brain tissue,
<b>Note-IHC: suggested antigen retrieval with TE buffer pH 9.0; (*) Alternatively, antigen retrieval may be performed with citrate buffer pH 6.0</b>	

## Background Information

MBP belongs to the myelin basic protein family. The classic group of MBP isoforms (isoform 4-isoform 14) are the most abundant protein components of the myelin membrane in the CNS. They have a role in both its formation and stabilization. The smaller isoforms might have an important role in remyelination of denuded axons in multiple sclerosis. The non-classic group of MBP isoforms (isoform 1-isoform 3/Golli-MBPs) may preferentially have a role in the early developing brain long before myelination, maybe as components of transcriptional complexes, and may also be involved in signaling pathways in T-cells and neural cells. MBP has six isoforms. Catalog# 10458-1-AP is capable of recognizing multiple isoforms of MBP.

## Notable Publications

Author	Pubmed ID	Journal	Application
Wei Cai	36170234	Autophagy	IF,FC
Guangcong Peng	34562473	Brain Res	IF
Jiuyang Ding	34562559	Toxicol Lett	IHC

## Storage

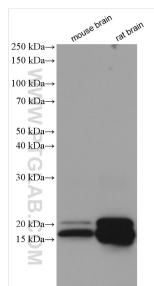
**Storage:**  
Store at -20°C. Stable for one year after shipment.  
**Storage Buffer:**  
PBS with 0.02% sodium azide and 50% glycerol, pH7.3  
Aliquoting is unnecessary for -20°C storage

\*\*\* 20ul sizes contain 0.1% BSA

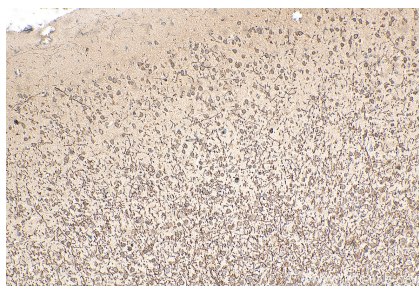
For technical support and original validation data for this product please contact:  
T: 1 (888) 4PTGLAB (1-888-478-4522) (toll free in USA), or 1(312) 455-8498 (outside USA)  
E: proteintech@ptglab.com  
W: ptglab.com

This product is exclusively available under Proteintech Group brand and is not available to purchase from any other manufacturer.

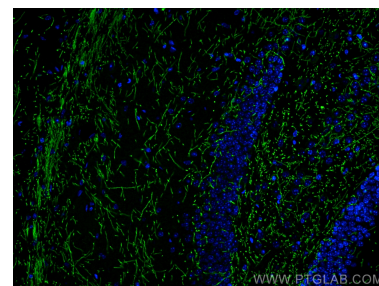
## Selected Validation Data



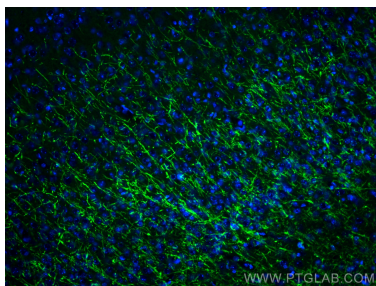
Various lysates were subjected to SDS PAGE followed by western blot with 10458-1-AP (Myelin basic protein antibody) at dilution of 1:8000 incubated at room temperature for 1.5 hours.



Immunohistochemical analysis of paraffin-embedded mouse brain tissue slide using 10458-1-AP (Myelin basic protein antibody) at dilution of 1:200 (under 10x lens). Heat mediated antigen retrieval with Tris-EDTA buffer (pH 9.0).



Immunofluorescent analysis of (4% PFA) fixed mouse brain tissue using Myelin basic protein antibody (10458-1-AP) at dilution of 1:200 and CoraLite®488-Conjugated AffiniPure Goat Anti-Rabbit IgG(H+L).



Immunofluorescent analysis of (4% PFA) fixed frozen OCT-embedded mouse brain tissue using Myelin basic protein antibody (10458-1-AP) at dilution of 1:200 and Multi-rAb CoraLite® Plus 488-Goat Anti-Rabbit Recombinant Secondary Antibody (H+L) (RGAR002).