

For Research Use Only

# RhoGDI Polyclonal antibody

Catalog Number: 10509-1-Ig

Featured Product

10 Publications



## Basic Information

<b>Catalog Number:</b> 10509-1-Ig	<b>GenBank Accession Number:</b> BC005851	<b>Purification Method:</b> Protein A purification
<b>Size:</b> 150UL, Concentration: 2000 µg/ml by Nanodrop and 600 µg/ml by Bradford method using BSA as the standard;	<b>GeneID (NCBI):</b> 396	<b>Recommended Dilutions:</b> WB 1:500-1:2000 IHC 1:20-1:200
<b>Source:</b> Rabbit	<b>Full Name:</b> Rho GDP dissociation inhibitor (GDI) alpha	
<b>Isotype:</b> IgG	<b>Calculated MW:</b> 28 kDa	
<b>Immunogen Catalog Number:</b> AG0791	<b>Observed MW:</b> 28 kDa	

## Applications

### Tested Applications:

IHC, WB, ELISA

### Cited Applications:

IHC, WB

### Species Specificity:

human, mouse

### Cited Species:

human, mouse, rat

### Positive Controls:

**WB:** Jurkat cells, A431 cells, mouse pancreas tissue, HL-60 cells, HeLa cells, HEK-293 cells

**IHC:** human breast cancer tissue, human colon cancer tissue

**Note-IHC: suggested antigen retrieval with TE buffer pH 9.0; (\*) Alternatively, antigen retrieval may be performed with citrate buffer pH 6.0**

## Background Information

Rho GDP-dissociation inhibitor (RhoGDI), also called ARHGDI, is one member of ARHGDI, which is ubiquitously expressed and interacts with several Rho GTPases, mainly including RhoA, Rac1, and Cdc42. RhoGDI can inhibit nucleotide exchange and membrane association to downregulate the activities of Rho family GTPase. It is overexpressed in various human cancers. Activity of this protein is important in a variety of cellular processes, and it is overexpressed in various human cancers. Mutations in RhoGDI have been found in individuals with nephrotic syndrome, type 8.

## Notable Publications

Author	Pubmed ID	Journal	Application
Wang Jing J	23028951	PLoS One	WB, IHC
Yu Lian	30326930	J Exp Clin Cancer Res	WB
Cheng Liu	25397718	J Agric Food Chem	WB

## Storage

### Storage:

Store at -20°C. Stable for one year after shipment.

### Storage Buffer:

PBS with 0.02% sodium azide and 50% glycerol pH 7.3.

Aliquoting is unnecessary for -20°C storage

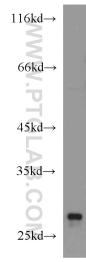
For technical support and original validation data for this product please contact:

T: 1 (888) 4PTGLAB (1-888-478-4522) (toll free in USA), or 1(312) 455-8498 (outside USA)

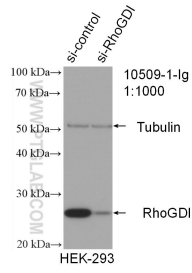
E: proteintech@ptglab.com  
W: ptglab.com

**This product is exclusively available under Proteintech Group brand and is not available to purchase from any other manufacturer.**

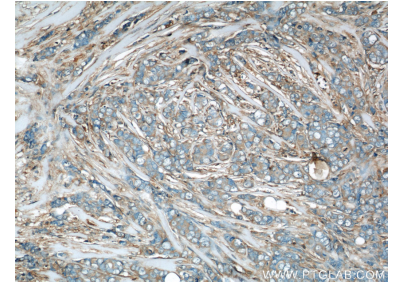
## Selected Validation Data



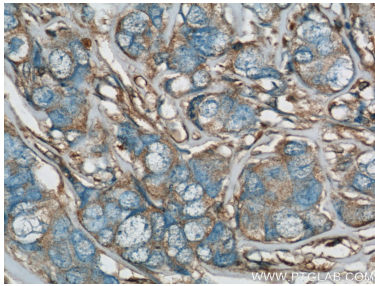
Jurkat cells were subjected to SDS PAGE followed by western blot with 10509-1-Ig (RhoGDI antibody) at dilution of 1:1000 incubated at room temperature for 1.5 hours.



WB result of RhoGDI antibody (10509-1-Ig; 1:1000; incubated at room temperature for 1.5 hours) with sh-Control and sh-RhoGDI transfected HEK-293 cells.



Immunohistochemical analysis of paraffin-embedded human breast cancer using 10509-1-Ig (RhoGDI antibody) at dilution of 1:50 (under 10x lens).



Immunohistochemical analysis of paraffin-embedded human breast cancer using 10509-1-Ig (RhoGDI antibody) at dilution of 1:50 (under 40x lens).