

For Research Use Only

Chromogranin A Polyclonal antibody



Catalog Number: 10529-1-AP

2 Publications

Basic Information

Catalog Number: 10529-1-AP	GenBank Accession Number: BC006459	Purification Method: Antigen affinity purification
Size: 150UL, Concentration: 400 µg/ml by Nanodrop and 247 µg/ml by Bradford method using BSA as the standard;	GeneID (NCBI): 1113	Recommended Dilutions: WB 1:500-1:2000 IHC 1:400-1:1600 IF 1:200-1:800
Source: Rabbit	Full Name: chromogranin A (parathyroid secretory protein 1)	
Isotype: IgG	Calculated MW: 51 kDa	
Immunogen Catalog Number: AG0807	Observed MW: 70 kDa	

Applications

Tested Applications: IF, IHC, WB, ELISA	Positive Controls: WB: PC-12 cells, IHC: human pancreas tissue, human colon tissue, human lung cancer tissue IF: mouse pancreas tissue,
Cited Applications: WB	
Species Specificity: human, mouse, rat	
Cited Species: human	
Note-IHC: suggested antigen retrieval with TE buffer pH 9.0; (*) Alternatively, antigen retrieval may be performed with citrate buffer pH 6.0	

Background Information

Chromogranin A is a member of the granin family of neuroendocrine secretory proteins. It is located in secretory vesicles of neurons and endocrine cells. Chromogranin A is the precursor to several functional peptides including vasostatin, pancreastatin, catestatin and parastatin. These peptides negatively modulate the neuroendocrine function of the releasing cell (autocrine) or nearby cells (paracrine). CgA is one of the most used tumor markers in NET's (neuroendocrine tumors), and elevated CgA concentrations have been demonstrated in serum or plasma of patients with different types of these tumors.

Notable Publications

Author	Pubmed ID	Journal	Application
Azita Monazzam	32884006	Sci Rep	WB
Ming Zhao	32783937	Cell Rep	

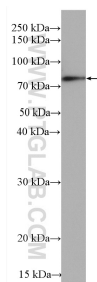
Storage

Storage:
Store at -20°C. Stable for one year after shipment.
Storage Buffer:
PBS with 0.02% sodium azide and 50% glycerol pH 7.3.
Aliquoting is unnecessary for -20°C storage

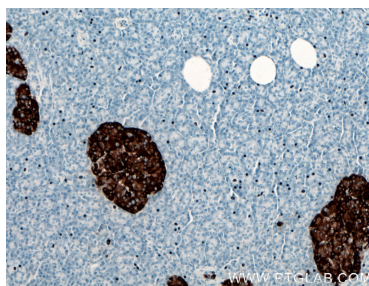
For technical support and original validation data for this product please contact:
T: 1 (888) 4PTGLAB (1-888-478-4522) (toll free in USA), or 1(312) 455-8498 (outside USA)
E: proteintech@ptglab.com
W: ptglab.com

This product is exclusively available under Proteintech Group brand and is not available to purchase from any other manufacturer.

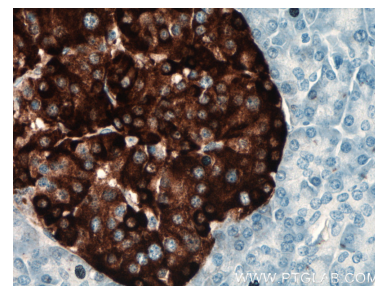
Selected Validation Data



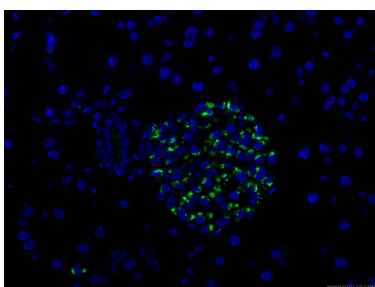
PC-12 cells were subjected to SDS PAGE followed by western blot with 10529-1-AP (Chromogranin A antibody) at dilution of 1:1000 incubated at room temperature for 1.5 hours.



Immunohistochemical analysis of paraffin-embedded human pancreas tissue slide using 10529-1-AP (Chromogranin A antibody) at dilution of 1:1600 (under 10x lens).



Immunohistochemical analysis of paraffin-embedded human pancreas tissue slide using 10529-1-AP (Chromogranin A antibody) at dilution of 1:1600 (under 40x lens).



Immunofluorescent analysis of (4% PFA) fixed mouse pancreas tissue using 10529-1-AP (Chromogranin A antibody), at dilution of 1:400 and CoraLite®488-Conjugated AffiniPure Goat Anti-Rabbit IgG(H+L).