

For Research Use Only

# Calmodulin Polyclonal antibody



Catalog Number: 10541-1-AP **6 Publications**

## Basic Information

**Catalog Number:**

10541-1-AP

**Size:**

150ul , Concentration: 133 µg/ml by Bradford method using BSA as the standard;

**Source:**

Rabbit

**Isotype:**

IgG

**Immunogen Catalog Number:**

AG0827

**GenBank Accession Number:**

BC006182

**GeneID (NCBI):**

808

**Full Name:**

calmodulin 3 (phosphorylase kinase, delta)

**Calculated MW:**

17 kDa

**Observed MW:**

17 kDa

**Purification Method:**

Antigen affinity purification

**Recommended Dilutions:**

WB 1:500-1:1000

IP 0.5-4.0 ug for IP and 1:500-1:1000 for WB

IHC 1:50-1:500

## Applications

**Tested Applications:**

IHC, IP, WB, ELISA

**Cited Applications:**

IHC, IP, WB

**Species Specificity:**

human, mouse

**Cited Species:**

human, mouse

**Note-IHC: suggested antigen retrieval with TE buffer pH 9.0; (\*) Alternatively, antigen retrieval may be performed with citrate buffer pH 6.0**

**Positive Controls:**

WB : Ramos cells, mouse brain tissue, NCCIT cell, MCF-7 cells, HepG2 cells, human brain tissue, HeLa cells

IP : Ramos cells,

IHC : human breast cancer tissue,

## Background Information

Calmodulin (CaM) is a Ca<sup>2+</sup>-binding protein that transduces Ca<sup>2+</sup>-mediated signals by binding to and regulating the activity of hundreds of enzymes and non-enzymatic proteins. It is highly conserved across species and involved in many biological processes, including vesicle release, cell proliferation, and apoptosis. This antibody can recognize CALM1, CALM2 and CALM3.

## Notable Publications

Author	Pubmed ID	Journal	Application
Weiwei Yang	29416594	Oncotarget	IP
Liang Zhou	33248694	Biochem Biophys Res Commun	WB
Lai-Ling Du	29532428	J Cardiovasc Transl Res	WB

## Storage

**Storage:**

Store at -20°C. Stable for one year after shipment.

**Storage Buffer:**

PBS with 0.02% sodium azide and 50% glycerol pH 7.3.

Aliquoting is unnecessary for -20°C storage

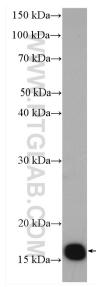
For technical support and original validation data for this product please contact:

T: 1 (888) 4PTGLAB (1-888-478-4522) (toll free in USA), or 1(312) 455-8498 (outside USA)

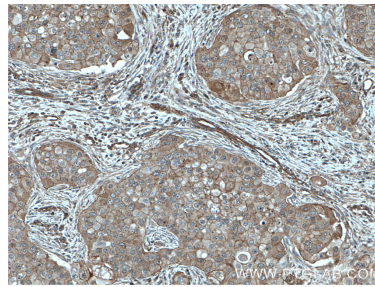
E: proteintech@ptglab.com  
W: ptglab.com

**This product is exclusively available under Proteintech Group brand and is not available to purchase from any other manufacturer.**

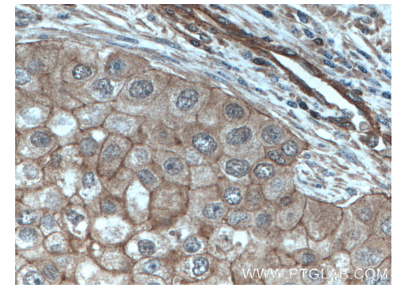
## Selected Validation Data



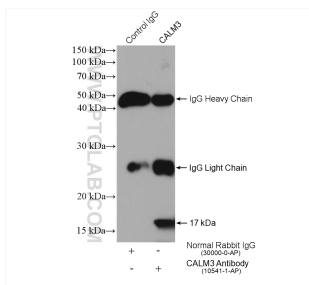
Ramos cells were subjected to SDS PAGE followed by western blot with 10541-1-AP (Calmodulin antibody) at dilution of 1:500 incubated at room temperature for 1.5 hours.



Immunohistochemical analysis of paraffin-embedded human breast cancer tissue slide using 10541-1-AP (Calmodulin antibody) at dilution of 1:200 (under 10x lens. Heat mediated antigen retrieval with Tris-EDTA buffer (pH 9.0).



Immunohistochemical analysis of paraffin-embedded human breast cancer tissue slide using 10541-1-AP (Calmodulin antibody) at dilution of 1:200 (under 40x lens. Heat mediated antigen retrieval with Tris-EDTA buffer (pH 9.0).



IP result of anti-Calmodulin(IP:10541-1-AP, 2ug; Detection:10541-1-AP 1:600) with Ramos cells lysate 1120 ug.