

For Research Use Only

PELO Polyclonal antibody

Catalog Number: 10582-1-AP

Featured Product

14 Publications



Basic Information

Catalog Number:

10582-1-AP

Size:

150ul, Concentration: 450 ug/ml by Nanodrop and 300 ug/ml by Bradford method using BSA as the standard;

Source:

Rabbit

Isotype:

IgG

Immunogen Catalog Number:

AG0873

GenBank Accession Number:

BC005889

GeneID (NCBI):

53918

UNIPROT ID:

Q9BRX2

Full Name:

pelota homolog (Drosophila)

Calculated MW:

43 kDa

Observed MW:

43-45 kDa

Purification Method:

Antigen affinity purification

Recommended Dilutions:

WB: 1:1000-1:6000

IP: 0.5-4.0 ug for 1.0-3.0 mg of total protein lysate

IHC: 1:50-1:500

IF/ICC: 1:200-1:800

Applications

Tested Applications:

WB, IHC, IF/ICC, IP, ELISA

Cited Applications:

WB, IF, IP

Species Specificity:

human, mouse, rat

Cited Species:

human, mouse

Note-IHC: suggested antigen retrieval with TE buffer pH 9.0; (*) Alternatively, antigen retrieval may be performed with citrate buffer pH 6.0

Positive Controls:

WB: HEK-293 cells, mouse testis tissue, HeLa cells, SKOV-3 cells

IP: HEK-293 cells,

IHC: human liver tissue,

IF/ICC: HeLa cells,

Background Information

The Pelo gene was originally identified in a mutagenesis screen for spermatogenesis-specific genes of *Drosophila melanogaster*. The PELO is required for the meiotic division during the G2/M transition, and functions in recognizing stalled ribosomes and triggering endonucleolytic cleavage of the mRNA, a mechanism to release non-functional ribosomes and degrade damaged mRNAs [PMID:12556505]. It may participate in the machinery of protein synthesis or in the regulation of mRNA translation [PMID:9584085].

Notable Publications

Author	Pubmed ID	Journal	Application
Shuai Hou	31216022	Nucleic Acids Res	WB
I-Hui Wu	34107246	Cell Rep	
Mark Stoneley	35180429	Mol Cell	WB

Storage

Storage:

Store at -20°C. Stable for one year after shipment.

Storage Buffer:

PBS with 0.02% sodium azide and 50% glycerol, pH7.3

Aliquoting is unnecessary for -20°C storage

*** 20ul sizes contain 0.1% BSA

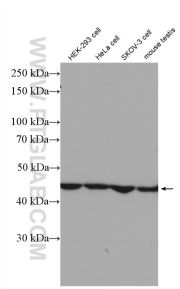
For technical support and original validation data for this product please contact:

T: 1 (888) 4PTGLAB (1-888-478-4522) (toll free in USA), or 1(312) 455-8498 (outside USA)

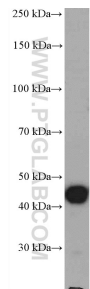
E: proteintech@ptglab.com
W: ptglab.com

This product is exclusively available under Proteintech Group brand and is not available to purchase from any other manufacturer.

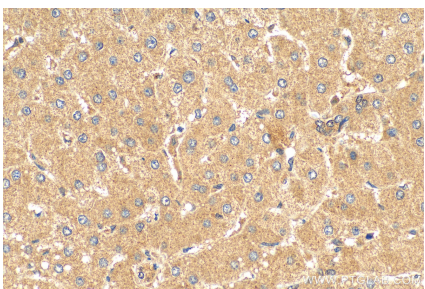
Selected Validation Data



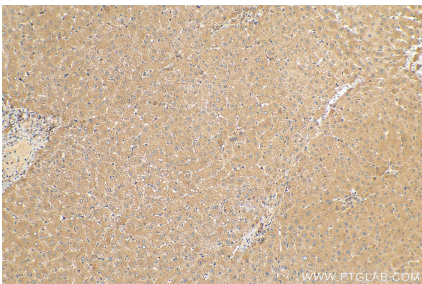
Various cells were subjected to SDS PAGE followed by western blot with 10582-1-AP (PELO antibody) at dilution of 1:3000 incubated at room temperature for 1.5 hours.



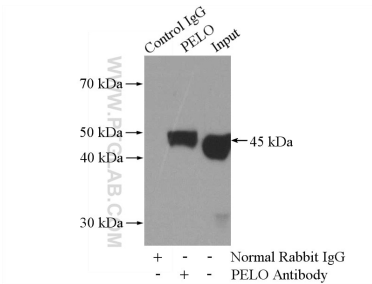
mouse testis tissue were subjected to SDS PAGE followed by western blot with 10582-1-AP (PELO antibody) at dilution of 1:3000 incubated at room temperature for 1.5 hours.



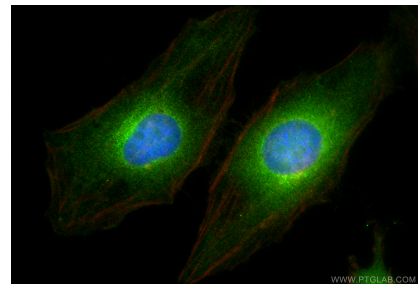
Immunohistochemical analysis of paraffin-embedded human liver tissue slide using 10582-1-AP (PELO antibody) at dilution of 1:200 (under 40x lens). Heat mediated antigen retrieval with Tris-EDTA buffer (pH 9.0).



Immunohistochemical analysis of paraffin-embedded human liver tissue slide using 10582-1-AP (PELO antibody) at dilution of 1:200 (under 10x lens). Heat mediated antigen retrieval with Tris-EDTA buffer (pH 9.0).



IP result of anti-PELO (IP:10582-1-AP, 4ug; Detection:10582-1-AP 1:500) with HEK-293 cells lysate 1200ug.



Immunofluorescent analysis of (4% PFA) fixed HeLa cells using PELO antibody (10582-1-AP) at dilution of 1:400 and CoraLite@488-Conjugated Goat Anti-Rabbit IgG(H+L) (SA00013-2), CL594-Phalloidin (red).