

For Research Use Only

AP1M2 Polyclonal ANTIBODY



Catalog Number: 10618-1-AP

Featured Product

Basic Information

Catalog Number: 10618-1-AP	GenBank Accession Number: BC005021	Recommended Dilutions: WB 1:500-1:1000 IHC 1:50-1:500
Size: 32 µg/150 µl	GeneID (NCBI): 10053	
Source: Rabbit	Full Name: adaptor-related protein complex 1, mu 2 subunit	
Isotype: IgG	Calculated MW: 48 kDa	
Purification Method: Antigen affinity purification	Observed MW: 50-55 kDa	
Immunogen Catalog Number: AG0961		

Applications

Tested Applications:
IHC, WB, ELISA
Species Specificity:
human,mouse,rat

Note: suggested antigen retrieval with TE buffer pH 9.0; (*) Alternatively, antigen retrieval may be performed with citrate buffer pH 6.0

Positive Controls:

WB : mouse colon tissue; Hacat cells
IHC : human pancreas cancer tissue; human kidney tissue

Background Information

AP1M2 is a subunit of the adaptor complex AP-1. It belongs to the adaptor complexes medium subunit family. Adaptor protein (AP) complexes are cytosolic heterotetramers that mediate the sorting of membrane proteins in the secretory and endocytic pathways. AP-1 is found at the cytoplasmic face of coated vesicles located at the Golgi complex, where it mediates both the recruitment of clathrin to the membrane and the recognition of sorting signals within the cytosolic tails of transmembrane receptors.

Notable Publications

Author	Pubmed ID	Journal	Application
--------	-----------	---------	-------------

Storage

Storage:
Store at -20°C. Stable for one year after shipment.
Storage Buffer:
PBS with 0.1% sodium azide and 50% glycerol pH 7.3.
Aliquoting is unnecessary for -20°C storage

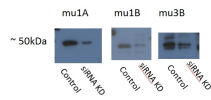
For technical support and original validation data for this product please contact:

T: 1 (888) 4PTGLAB (1-888-478-4522) (toll free in USA), or 1(312) 455-8498 (outside USA)

E: proteintech@ptglab.com
W: ptglab.com

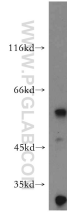
This product is exclusively available under Proteintech Group brand and is not available to purchase from any other manufacturer.

Selected Validation Data

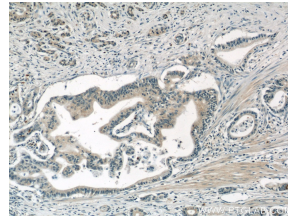


AP1M1 is mu1A: 12112-1-AP,
 AP1M2 is mu1B: 10618-1-AP,
 Ap3M2 is mu3B: 11925-1-AP,
 acceptable bands ~50 kDa showing
 some degree of siRNA
 knockdown

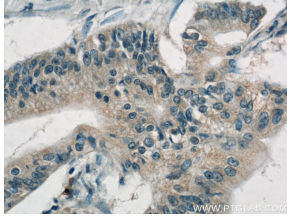
WB result of AP1M2 antibody (10618-1-AP; 1:500)
 with siRNA cell lysate.



mouse colon tissue were subjected to SDS PAGE
 followed by western blot with 10618-1-AP(AP1M2
 antibody) at dilution of 1:500 incubated at room
 temperature for 1.5 hours



Immunohistochemistry of paraffin-embedded
 human pancreas cancer tissue slide using 10618-
 1-AP(AP1M2 Antibody) at dilution of 1:50 (under
 10x lens)



Immunohistochemistry of paraffin-embedded
 human pancreas cancer tissue slide using 10618-
 1-AP(AP1M2 Antibody) at dilution of 1:50 (under
 40x lens)