

For Research Use Only

Placental Growth Factor Polyclonal antibody



Catalog Number: 10642-1-AP

Featured Product

12 Publications

Basic Information

Catalog Number:

10642-1-AP

Size:

150ul, Concentration: 300 µg/ml by Nanodrop and 250 µg/ml by Bradford method using BSA as the standard;

Source:

Rabbit

Isotype:

IgG

Immunogen Catalog Number:

AG0969

GenBank Accession Number:

BC007789

GeneID (NCBI):

5228

Full Name:

placental growth factor

Calculated MW:

25 kDa

Observed MW:

50 kDa

Purification Method:

Antigen affinity purification

Recommended Dilutions:

WB 1:500-1:1000

IHC 1:200-1:800

Applications

Tested Applications:

IHC, WB, ELISA

Cited Applications:

IF, IHC

Species Specificity:

human, mouse

Cited Species:

human, mouse, rat

Note-IHC: suggested antigen retrieval with TE buffer pH 9.0; (*) Alternatively, antigen retrieval may be performed with citrate buffer pH 6.0

Positive Controls:

WB: human placenta tissue, mouse placenta tissue

IHC: human placenta tissue, human breast cancer tissue, human meningioma tissue

Background Information

Placenta growth factor (PLGF) is a homodimeric glycoprotein, 46-50 kDa in size, belonging to the vascular endothelial growth factor (VEGF) sub-family. It plays an important role in pathological VEGF-driven angiogenesis. PLGF is expressed not only in placental cells but also in colon and mammary carcinomas. It acts as a primary inflammatory instigator of atherosclerotic plaque instability and thus may be useful as a risk-predicting biomarker in patients with acute coronary syndromes (ACS).

Notable Publications

Author	Pubmed ID	Journal	Application
Qiang Ma	31562866	Eur J Pharmacol	IF, WB
Jun Tao	33010604	Placenta	WB
Yudong Song	30241030	Biomaterials	WB

Storage

Storage:

Store at -20°C. Stable for one year after shipment.

Storage Buffer:

PBS with 0.02% sodium azide and 50% glycerol pH 7.3.

Aliquoting is unnecessary for -20°C storage

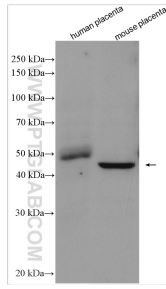
For technical support and original validation data for this product please contact:

T: 1 (888) 4PTGLAB (1-888-478-4522) (toll free in USA), or 1(312) 455-8498 (outside USA)

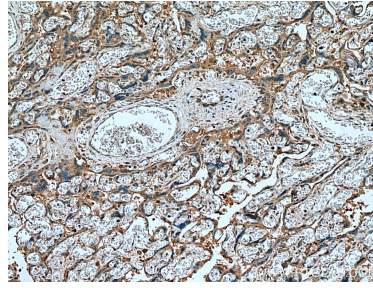
E: proteintech@ptglab.com
W: ptglab.com

This product is exclusively available under Proteintech Group brand and is not available to purchase from any other manufacturer.

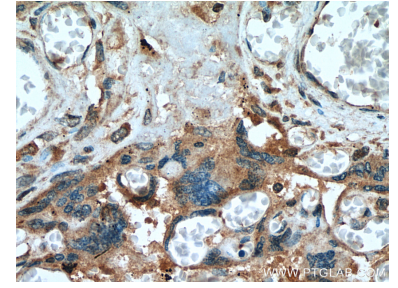
Selected Validation Data



Various lysates were subjected to SDS PAGE followed by western blot with 10642-1-AP (Placental Growth Factor antibody) at dilution of 1:800 incubated at room temperature for 1.5 hours.



Immunohistochemical analysis of paraffin-embedded human placenta tissue slide using 10642-1-AP (Placental Growth Factor antibody) at dilution of 1:400 (under 10x lens). Heat mediated antigen retrieval with Tris-EDTA buffer (pH 9.0).



Immunohistochemical analysis of paraffin-embedded human placenta tissue slide using 10642-1-AP (Placental Growth Factor antibody) at dilution of 1:400 (under 40x lens). Heat mediated antigen retrieval with Tris-EDTA buffer (pH 9.0).