

For Research Use Only

# AHCYL1 Polyclonal antibody

Catalog Number: 10658-3-AP

Featured Product

20 Publications



## Basic Information

### Catalog Number:

10658-3-AP

### Size:

150ul, Concentration: 500 ug/ml by Nanodrop and 267 ug/ml by Bradford method using BSA as the standard;

### Source:

Rabbit

### Isotype:

IgG

### Immunogen Catalog Number:

AG1017

### GenBank Accession Number:

BC007576

### GeneID (NCBI):

10768

### UNIPROT ID:

O43865

### Full Name:

S-adenosylhomocysteine hydrolase-like 1

### Calculated MW:

65 kDa

### Observed MW:

60 kDa

### Purification Method:

Antigen affinity purification

### Recommended Dilutions:

WB 1:500-1:2000

IP 0.5-4.0 ug for 1.0-3.0 mg of total protein lysate

IHC 1:100-1:400

IF/ICC 1:200-1:800

## Applications

### Tested Applications:

WB, IHC, IF/ICC, IP, ELISA

### Cited Applications:

WB, IHC, IP

### Species Specificity:

human, mouse, rat

### Cited Species:

human, mouse, rat, pig, chicken

**Note-IHC: suggested antigen retrieval with TE buffer pH 9.0; (\*) Alternatively, antigen retrieval may be performed with citrate buffer pH 6.0**

### Positive Controls:

WB: Jurkat cells, HeLa cells, mouse thymus tissue

IP: HeLa cells,

IHC: human liver cancer tissue,

IF/ICC: HeLa cells,

## Background Information

S-adenosylhomocysteine hydrolase-like protein 1 (AHCYL1), also known as IP3 receptor-binding protein released with IP3 (IRBIT), regulates IP3-induced Ca<sup>2+</sup> release into the cytoplasm of cells (PMID:23145124). This protein is also named as DCAL, XPVKONA and belongs to the adenosylhomocysteinase family. AHCYL1 mRNA and protein are most abundant in the glandular epithelium of adenocarcinoma of cancerous, but not normal and AHCYL1 protein is predominantly in the nucleus (PMID:22826361). It has 2 isoforms produced by alternative splicing.

## Notable Publications

Author	Pubmed ID	Journal	Application
Yimin Jia	27648945	J Agric Food Chem	WB
Demin Cai	27763549	Nutrients	WB
Xinwei Liu	33039524	Neuroscience	WB,IP

## Storage

### Storage:

Store at -20°C. Stable for one year after shipment.

### Storage Buffer:

PBS with 0.02% sodium azide and 50% glycerol pH 7.3.

Aliquoting is unnecessary for -20°C storage

\*\*\* 20ul sizes contain 0.1% BSA

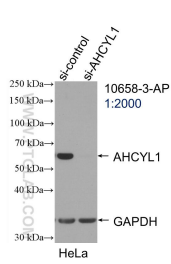
For technical support and original validation data for this product please contact:

T: 1 (888) 4PTGLAB (1-888-478-4522) (toll free in USA), or 1(312) 455-8498 (outside USA)

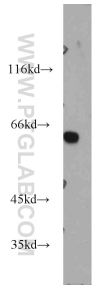
E: proteintech@ptglab.com  
W: ptglab.com

This product is exclusively available under Proteintech Group brand and is not available to purchase from any other manufacturer.

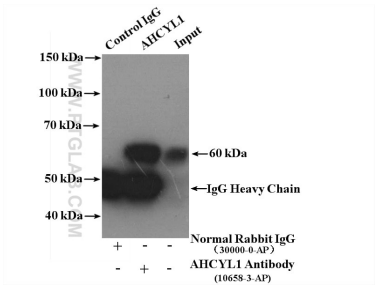
Selected Validation Data



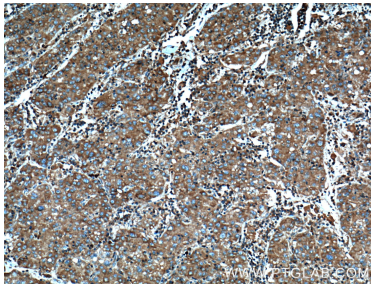
WB result of AHCYL1 antibody (10658-3-AP; 1:2000; incubated at room temperature for 1.5 hours) with sh-Control and sh-AHCYL1 transfected HeLa cells.



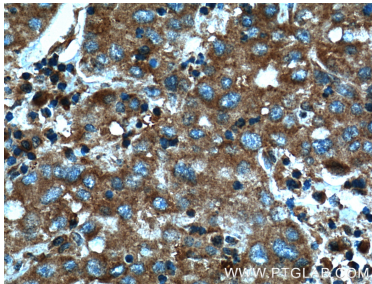
Jurkat cells were subjected to SDS PAGE followed by western blot with 10658-3-AP (AHCYL1 antibody) at dilution of 1:1000 incubated at room temperature for 1.5 hours.



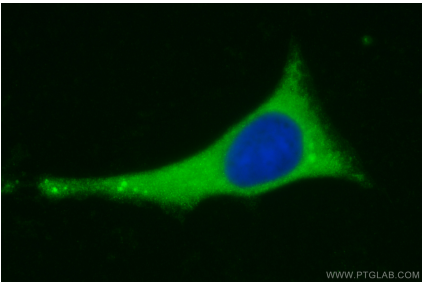
IP result of anti-AHCYL1 (IP:10658-3-AP, 4ug; Detection:10658-3-AP 1:1000) with HeLa cells lysate 2400ug.



Immunohistochemical analysis of paraffin-embedded human liver cancer tissue slide using 10658-3-AP (AHCYL1 Antibody) at dilution of 1:200 (under 10x lens). Heat mediated antigen retrieval with Tris-EDTA buffer (pH 9.0).



Immunohistochemical analysis of paraffin-embedded human liver cancer tissue slide using 10658-3-AP (AHCYL1 Antibody) at dilution of 1:200 (under 40x lens). Heat mediated antigen retrieval with Tris-EDTA buffer (pH 9.0).



Immunofluorescent analysis of (-20°C Methanol) fixed HeLa cells using AHCYL1 antibody (10658-3-AP) at dilution of 1:400 and CoraLite®488-Conjugated Goat Anti-Rabbit IgG(H+L).