

For Research Use Only

Protein C inhibitor Polyclonal antibody



Catalog Number: 10673-1-AP

3 Publications

Basic Information

| | | |
|--|--|---|
| Catalog Number: 10673-1-AP | GenBank Accession Number: BC008915 | Purification Method: Antigen affinity purification |
| Size: 150ul , Concentration: 200 µg/ml by Nanodrop and 133 µg/ml by Bradford method using BSA as the standard; | GeneID (NCBI): 5104 | Recommended Dilutions: WB 1:500-1:2000 IHC 1:20-1:200 IF 1:50-1:500 |
| Source: Rabbit | Full Name: serpin peptidase inhibitor, clade A (alpha-1 antiproteinase, antitrypsin), member 5 | |
| Isotype: IgG | Calculated MW: 46 kDa | |
| Immunogen Catalog Number: AG1078 | Observed MW: 46 kDa | |

Applications

Tested Applications:

IF, IHC, WB, ELISA

Cited Applications:

IHC

Species Specificity:

human

Cited Species:

human, rat

Note-IHC: suggested antigen retrieval with TE buffer pH 9.0; (*) Alternatively, antigen retrieval may be performed with citrate buffer pH 6.0

Positive Controls:

WB : HepG2 cells, A549 cells, HeLa cells, Jurkat cells, L02 cells, PC-3 cells

IHC : human ovary tumor tissue, human breast cancer tissue, human testis tissue

IF : HepG2 cells,

Background Information

SERPINA5 (also called Protein C Inhibitor, PCI) is a serpin type of serine protease inhibitor that is found in many tissues and fluids in human, including blood plasma, seminal plasma and urine. PCI found in blood originates from the liver and is capable of inhibiting several serine proteases involved in the regulation of coagulation and fibrinolysis, including activated protein C, thrombin, factor Xa, various kallikreins and plasminogen activators. PCI has been found to have antimicrobial and antitumor properties and thus appears to be a multi-functional protein.

Notable Publications

| Author | Pubmed ID | Journal | Application |
|-------------------------|-----------|--------------------------|-------------|
| Tengjiao Zhu | 34964303 | Proteomics Clin Appl | IHC |
| Bijsmans Ingrid T G WIT | 21102419 | Mod Pathol | IHC |
| Rodriguez Fausto J FJ | 19018242 | J Neuropathol Exp Neurol | IHC |

Storage

Storage:

Store at -20°C. Stable for one year after shipment.

Storage Buffer:

PBS with 0.02% sodium azide and 50% glycerol pH 7.3.

Aliquoting is unnecessary for -20°C storage

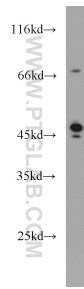
For technical support and original validation data for this product please contact:

T: 1 (888) 4PTGLAB (1-888-478-4522) (toll free in USA), or 1(312) 455-8498 (outside USA)

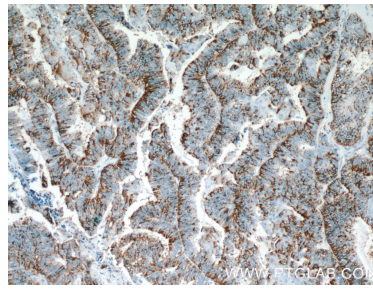
E: proteintech@ptglab.com
W: ptglab.com

This product is exclusively available under Proteintech Group brand and is not available to purchase from any other manufacturer.

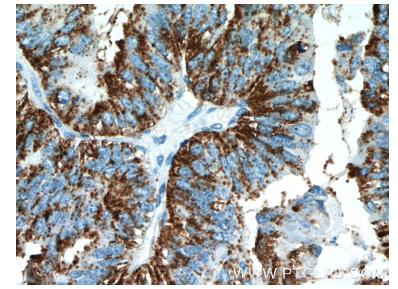
Selected Validation Data



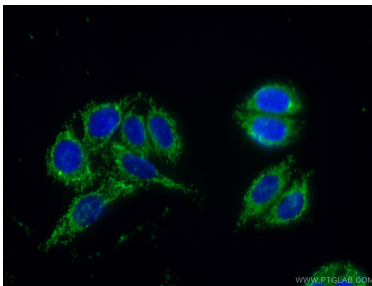
HepG2 cells were subjected to SDS PAGE followed by western blot with 10673-1-AP (Protein C inhibitor antibody) at dilution of 1:1000 incubated at room temperature for 1.5 hours.



Immunohistochemical analysis of paraffin-embedded human ovary tumor tissue slide using 10673-1-AP (Protein C inhibitor antibody) at dilution of 1:50 (under 10x lens).



Immunohistochemical analysis of paraffin-embedded human ovary tumor tissue slide using 10673-1-AP (Protein C inhibitor antibody) at dilution of 1:50 (under 40x lens).



Immunofluorescent analysis of (10% Formaldehyde) fixed HepG2 cells using 10673-1-AP (Protein C inhibitor antibody) at dilution of 1:50 and Alexa Fluor 488-conjugated AffiniPure Goat Anti-Rabbit IgG(H+L).