

For Research Use Only

KLK3/PSA Polyclonal antibody

Catalog Number: 10679-1-AP **6 Publications**



Basic Information

Catalog Number: 10679-1-AP	GenBank Accession Number: BC005307	Purification Method: Antigen affinity purification
Size: 150UL, Concentration: 333 µg/ml by Bradford method using BSA as the standard;	GeneID (NCBI): 354	Recommended Dilutions: WB 1:1000-1:8000 IHC 1:100-1:400
Source: Rabbit	Full Name: kallikrein-related peptidase 3	
Isotype: IgG	Calculated MW: 29 kDa	
Immunogen Catalog Number: AG1060	Observed MW: 30-34 kDa	

Applications

Tested Applications: IHC, WB, ELISA	Positive Controls: WB : LNCaP cells, Transfected HEK-293 cells IHC : human prostate cancer tissue,
Cited Applications: IHC, WB	
Species Specificity: human	
Cited Species: human	
Note-IHC: suggested antigen retrieval with TE buffer pH 9.0; (*) Alternatively, antigen retrieval may be performed with citrate buffer pH 6.0	

Background Information

Kallikreins are a subgroup of serine proteases having diverse physiological functions. Growing evidence suggests that many kallikreins are implicated in carcinogenesis and some have potential as novel cancer and other disease biomarkers. kallikrein-related peptidase 3, which is also called PSA (prostate-specific antigen) in the clinical setting, is useful in the diagnosis and monitoring of prostatic carcinoma. KLK3 has 5 isoforms produced by alternative splicing.

Notable Publications

Author	Pubmed ID	Journal	Application
Hui Ma	31127646	J Cell Biochem	IHC
Juan Li	32245249	Cancers (Basel)	WB
Wei Liu	33390843	Int J Biol Sci	WB

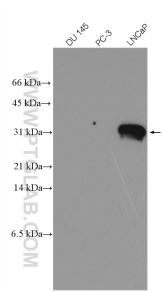
Storage

Storage:
Store at -20°C. Stable for one year after shipment.
Storage Buffer:
PBS with 0.02% sodium azide and 50% glycerol pH 7.3.
Aliquoting is unnecessary for -20°C storage

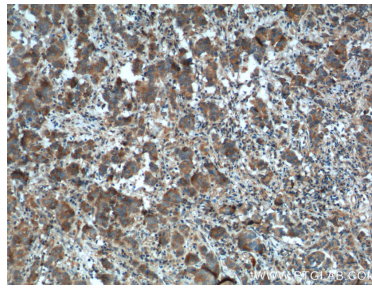
For technical support and original validation data for this product please contact:
T: 1 (888) 4PTGLAB (1-888-478-4522) (toll free in USA), or 1(312) 455-8498 (outside USA)
E: proteintech@ptglab.com
W: ptglab.com

This product is exclusively available under Proteintech Group brand and is not available to purchase from any other manufacturer.

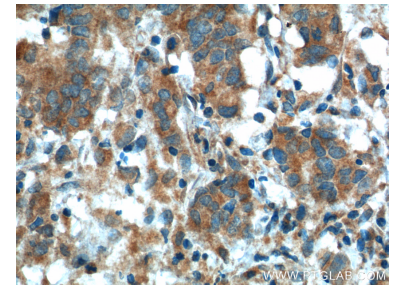
Selected Validation Data



DU 145(PSA-), PC-3(PSA-) and LNCaP (PSA+) cell lysates were subjected to SDS PAGE followed by western blot with 10679-1-AP (KLK3/PSA antibody) at dilution of 1:4000 incubated at room temperature for 1.5 hours.



Immunohistochemical analysis of paraffin-embedded human prostate cancer tissue slide using 10679-1-AP (KLK3/PSA antibody at dilution of 1:200 (under 10x lens). Heat mediated antigen retrieval with Tris-EDTA buffer (pH 9.0).



Immunohistochemical analysis of paraffin-embedded human prostate cancer tissue slide using 10679-1-AP (KLK3/PSA antibody at dilution of 1:200 (under 40x lens). Heat mediated antigen retrieval with Tris-EDTA buffer (pH 9.0).