

For Research Use Only

NELFE Polyclonal antibody

Catalog Number: 10705-1-AP

Featured Product

13 Publications



Basic Information

Catalog Number:
10705-1-AP

Size:
150ul, Concentration: 500 µg/ml by Nanodrop and 333 µg/ml by Bradford method using BSA as the standard;

Source:
Rabbit

Isotype:
IgG

Immunogen Catalog Number:
AG1186

GenBank Accession Number:
BC011600

GeneID (NCBI):
7936

Full Name:
RD RNA binding protein

Calculated MW:
37 kDa, 43 kDa

Observed MW:
43 kDa

Purification Method:

Antigen affinity purification

Recommended Dilutions:

WB 1:2000-1:12000
IP 0.5-4.0 ug for IP and 1:500-1:1000 for WB
IHC 1:50-1:200
IF 1:50-1:500

Applications

Tested Applications:

IF, IHC, IP, WB, ELISA

Cited Applications:

ChIP, IF, IHC, WB

Species Specificity:

human, mouse, rat

Cited Species:

human, mouse, rat

Note-IHC: suggested antigen retrieval with TE buffer pH 9.0; (*) Alternatively, antigen retrieval may be performed with citrate buffer pH 6.0

Positive Controls:

WB: HEK-293 cells, mouse brain tissue, HeLa cells, mouse eye tissue, rat brain tissue, mouse placenta tissue

IP: mouse brain tissue,

IHC: human prostate cancer tissue,

IF: HeLa cells,

Background Information

RDBP, also named as NELF-E and RD, belongs to the RRM NELF-E family. It is an essential component of the NELF complex which is a complex that negatively regulates the elongation of transcription by RNA polymerase II. The NELF complex, a complex acts via an association with the DSIF complex and causes transcriptional pausing, is counteracted by the P-TEFb kinase complex. RDBP was recently found implicated in RNA polymerase II pausing by association with Hsp90. Catalog# 10705-1-AP is a widely used rabbit polyclonal antibody obtained by immunizing animals with full-length RDBP of human origin.

Notable Publications

Author	Pubmed ID	Journal	Application
Bofeng Liu	33116310	Nature	IF
Sylvia C Hewitt	30332301	FASEB J	IHC, WB
Matthieu F Bastide	26480869	Neurobiol Dis	WB, IF

Storage

Storage:

Store at -20°C. Stable for one year after shipment.

Storage Buffer:

PBS with 0.02% sodium azide and 50% glycerol pH 7.3.

Aliquoting is unnecessary for -20°C storage

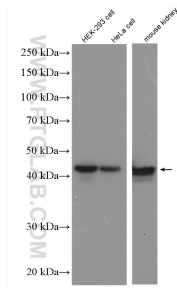
For technical support and original validation data for this product please contact:

T: 1 (888) 4PTGLAB (1-888-478-4522) (toll free in USA), or 1(312) 455-8498 (outside USA)

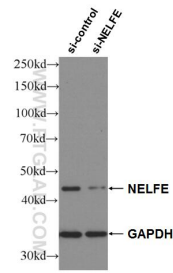
E: proteintech@ptglab.com
W: ptglab.com

This product is exclusively available under Proteintech Group brand and is not available to purchase from any other manufacturer.

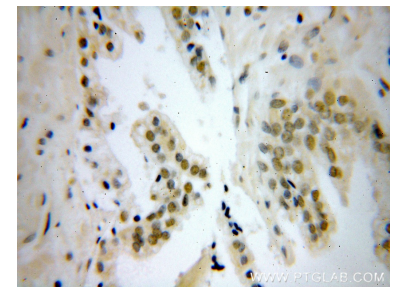
Selected Validation Data



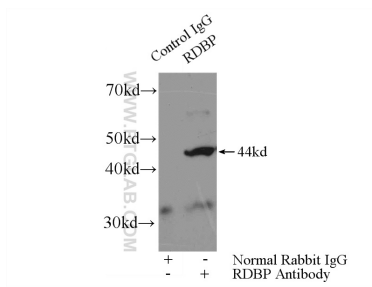
Various lysates were subjected to SDS PAGE followed by western blot with 10705-1-AP (NELFE antibody) at dilution of 1:6000 incubated at room temperature for 1.5 hours.



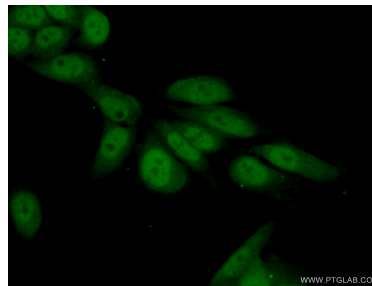
WB result of NELFE antibody (10705-1-AP; 1:60000; incubated at room temperature for 1.5 hours) with sh-Control and sh-NELFE transfected HEK-293 cells.



Immunohistochemical analysis of paraffin-embedded human prostate cancer using 10705-1-AP (NELFE antibody) at dilution of 1:100 (under 40x lens).



IP Result of anti-NELFE (IP:10705-1-AP, 4 μ g; Detection:10705-1-AP 1:800) with mouse brain tissue lysate 4680 μ g.



Immunofluorescent analysis of (10% Formaldehyde) fixed HeLa cells using 10705-1-AP (NELFE antibody) at dilution of 1:50 and Alexa Fluor 488-conjugated AffiniPure Goat Anti-Rabbit IgG(H+L).