

For Research Use Only

DBH Polyclonal antibody

Catalog Number: 10777-1-AP **1 Publications**



Basic Information

Catalog Number: 10777-1-AP	GenBank Accession Number: BC017174	Purification Method: Antigen affinity purification
Size: 150ul , Concentration: 400 µg/ml by Nanodrop and 327 µg/ml by Bradford method using BSA as the standard;	GeneID (NCBI): 1621	Recommended Dilutions: WB 1:500-1:2000 IHC 1:50-1:500 IF 1:10-1:100
Source: Rabbit	Full Name: DBH	
Isotype: IgG	Calculated MW: 64.8 kDa	
Immunogen Catalog Number: AG1196	Observed MW: 63 kDa	

Applications

Tested Applications: IF, IHC, WB, ELISA	Positive Controls: WB : HepG2 cells, HeLa cells, SH-SY5Y cells IHC : human liver cancer tissue, IF : HepG2 cells, HeLa cells
Cited Applications: WB	
Species Specificity: human	
Cited Species: human	
Note-IHC: suggested antigen retrieval with TE buffer pH 9.0; (*) Alternatively, antigen retrieval may be performed with citrate buffer pH 6.0	

Background Information

DBH belongs to the copper type II ascorbate-dependent monooxygenase family and catalyzes the oxidative hydroxylation of DBH to norepinephrine. It is almost exclusively located in the adrenal medulla and the synaptic vesicles of postganglionic sympathetic neurons (PMID:11857564). The DBH is glycosylated (63--67 kDa) while still in the membrane (PMID:2325165) and it can form a dimer (PMID:8546710). Defects in DBH are the cause of DBH deficiency (DBH deficiency).

Notable Publications

Author	Pubmed ID	Journal	Application
Yuan-Jun Qin	34571056	Peptides	WB

Storage

Storage:
Store at -20°C. Stable for one year after shipment.
Storage Buffer:
PBS with 0.02% sodium azide and 50% glycerol pH 7.3.
Aliquoting is unnecessary for -20°C storage

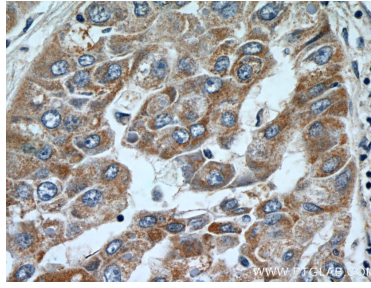
For technical support and original validation data for this product please contact:
T: 1 (888) 4PTGLAB (1-888-478-4522) (toll free in USA), or 1(312) 455-8498 (outside USA)
E: proteintech@ptglab.com
W: ptglab.com

This product is exclusively available under Proteintech Group brand and is not available to purchase from any other manufacturer.

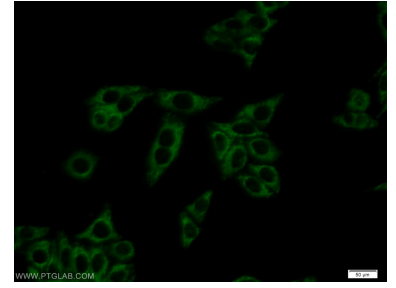
Selected Validation Data



HepG2 cells were subjected to SDS PAGE followed by western blot with 10777-1-AP (DBH antibody) at dilution of 1:1000 incubated at room temperature for 1.5 hours.



Immunohistochemical analysis of paraffin-embedded human liver cancer tissue slide using 10777-1-AP (DBH antibody at dilution of 1:100 (under 40x lens).



Immunofluorescent analysis of HepG2 cells using 10777-1-AP (DBH antibody) at dilution of 1:25 and Alexa Fluor 488-conjugated AffiniPure Goat Anti-Rabbit IgG(H+L).