

For Research Use Only

# SLC25A13 Polyclonal antibody

Catalog Number: 10789-1-AP

1 Publications



## Basic Information

### Catalog Number:

10789-1-AP

### Size:

150ul, Concentration: 500 ug/ml by Nanodrop and 300 ug/ml by Bradford method using BSA as the standard;

### Source:

Rabbit

### Isotype:

IgG

### Immunogen Catalog Number:

AG1242

### GenBank Accession Number:

BC006566

### GeneID (NCBI):

10165

### UNIPROT ID:

Q9UJ50

### Full Name:

solute carrier family 25, member 13 (citrin)

### Calculated MW:

74 kDa

### Observed MW:

60-63 kDa

### Purification Method:

Antigen affinity purification

### Recommended Dilutions:

WB 1:1000-1:8000

IP 0.5-4.0 ug for 1.0-3.0 mg of total protein lysate

IHC 1:50-1:500

IF/ICC 1:50-1:500

## Applications

### Tested Applications:

WB, IHC, IF/ICC, IP, ELISA

### Cited Applications:

WB

### Species Specificity:

human, mouse

### Cited Species:

human

**Note-IHC: suggested antigen retrieval with TE buffer pH 9.0; (\*) Alternatively, antigen retrieval may be performed with citrate buffer pH 6.0**

### Positive Controls:

**WB**: HEK-293T cells, A431 cells, HEK-293 cells, mouse kidney tissue, mouse liver tissue, Raji cells, mouse ovary tissue

**IP**: mouse kidney tissue,

**IHC**: human colon cancer tissue,

**IF/ICC**: U2OS cells,

## Background Information

SLC25A13, also known as citrin, has been identified as a mitochondrial aspartate-glutamate carrier protein and may be implicated in metabolic compartmentation. It consists of 675 amino acid residues and harbors four EF-hands and six mitochondrial transmembranous (TM) spanners. Mutations in SLC25A13 gene cause adult-onset type II citrullinemia (CTLN2) and neonatal intrahepatic cholestasis (NICCD). The complete deletion or cleaved SLC25A13 proteins have been reported in patients with SLC25A13 mutation.

## Notable Publications

Author	Pubmed ID	Journal	Application
Wenjie Wu	40033307	Cancer Cell Int	WB

## Storage

### Storage:

Store at -20°C. Stable for one year after shipment.

### Storage Buffer:

PBS with 0.02% sodium azide and 50% glycerol, pH7.3

Aliquoting is unnecessary for -20°C storage

\*\*\* 20ul sizes contain 0.1% BSA

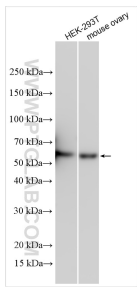
For technical support and original validation data for this product please contact:

T: 1 (888) 4PTGLAB (1-888-478-4522) (toll free in USA), or 1(312) 455-8498 (outside USA)

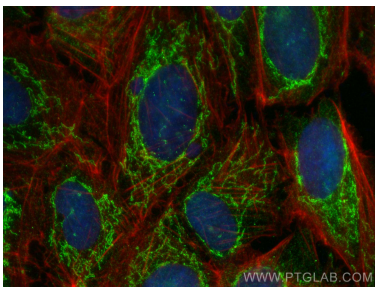
E: [proteintech@ptglab.com](mailto:proteintech@ptglab.com)  
W: [ptglab.com](http://ptglab.com)

This product is exclusively available under Proteintech Group brand and is not available to purchase from any other manufacturer.

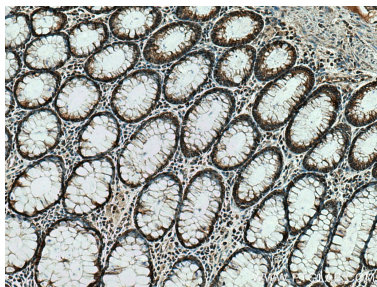
Selected Validation Data



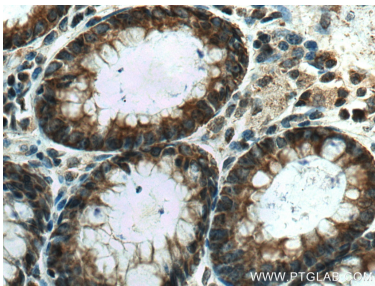
Various lysates were subjected to SDS PAGE followed by western blot with 10789-1-AP (SLC25A13 antibody) at dilution of 1:4000 incubated at room temperature for 1.5 hours.



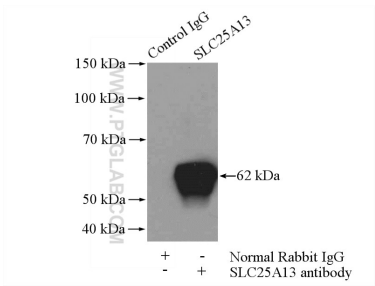
Immunofluorescent analysis of (4% PFA) fixed U2OS cells using SLC25A13 antibody (10789-1-AP) at dilution of 1:200 and CoraLite® 488-Conjugated AffiniPure Goat Anti-Rabbit IgG(H+L), CL594-phalloidin (red).



Immunohistochemical analysis of paraffin-embedded human colon cancer tissue slide using 10789-1-AP (SLC25A13 antibody) at dilution of 1:200 (under 10x lens). Heat mediated antigen retrieval with Tris-EDTA buffer (pH 9.0).



Immunohistochemical analysis of paraffin-embedded human colon cancer tissue slide using 10789-1-AP (SLC25A13 antibody) at dilution of 1:200 (under 40x lens). Heat mediated antigen retrieval with Tris-EDTA buffer (pH 9.0).



IP result of anti-SLC25A13 (IP:10789-1-AP, 4ug; Detection:10789-1-AP 1:1000) with mouse kidney tissue lysate 4000ug.