

For Research Use Only

# PKC Zeta Polyclonal antibody

Catalog Number: 10860-1-AP

Featured Product

2 Publications



## Basic Information

### Catalog Number:

10860-1-AP

### Size:

150ul, Concentration: 300 ug/ml by Nanodrop and 200 ug/ml by Bradford method using BSA as the standard;

### Source:

Rabbit

### Isotype:

IgG

### Immunogen Catalog Number:

AG1310

### GenBank Accession Number:

BC014270

### GeneID (NCBI):

5590

### UNIPROT ID:

Q05513

### Full Name:

protein kinase C, zeta

### Calculated MW:

80 kDa

### Observed MW:

68 kDa

### Purification Method:

Antigen affinity purification

### Recommended Dilutions:

WB 1:500-1:1000

IHC 1:50-1:500

IF/ICC 1:50-1:500

## Applications

### Tested Applications:

WB, IHC, IF/ICC, ELISA

### Cited Applications:

WB, IHC, IF

### Species Specificity:

human, mouse

### Cited Species:

human, mouse

**Note-IHC: suggested antigen retrieval with TE buffer pH 9.0; (\*) Alternatively, antigen retrieval may be performed with citrate buffer pH 6.0**

### Positive Controls:

WB : HEK-293 cells, NIH/3T3 cells

IHC : human breast cancer tissue, mouse cerebellum tissue, mouse eye tissue

IF/ICC : NIH/3T3 cells,

## Notable Publications

Author	Pubmed ID	Journal	Application
Hao-Fan Wang	36077689	Cancers (Basel)	WB,IHC
Alejandro M Chibly	29679075	Sci Rep	IF

## Storage

### Storage:

Store at -20°C. Stable for one year after shipment.

### Storage Buffer:

PBS with 0.02% sodium azide and 50% glycerol pH 7.3.

Aliquoting is unnecessary for -20°C storage

\*\*\* 20ul sizes contain 0.1% BSA

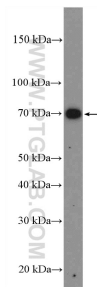
For technical support and original validation data for this product please contact:

T: 1 (888) 4PTGLAB (1-888-478-4522) (toll free in USA), or 1(312) 455-8498 (outside USA)

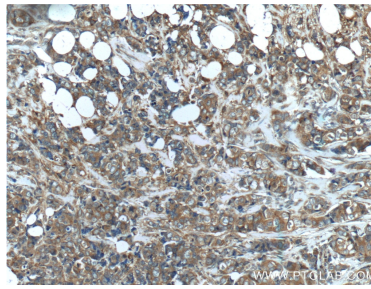
E: [proteintech@ptglab.com](mailto:proteintech@ptglab.com)  
W: [ptglab.com](http://ptglab.com)

This product is exclusively available under Proteintech Group brand and is not available to purchase from any other manufacturer.

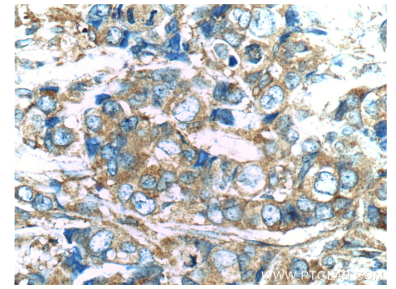
## Selected Validation Data



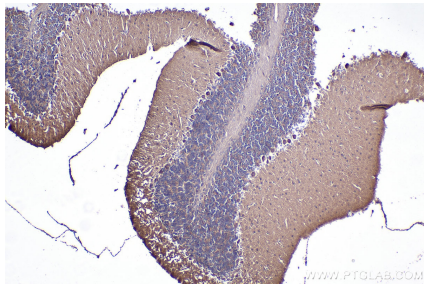
HEK-293 cells were subjected to SDS PAGE followed by western blot with 10860-1-AP (PKC zeta antibody at dilution of 1:600 incubated at room temperature for 1.5 hours.



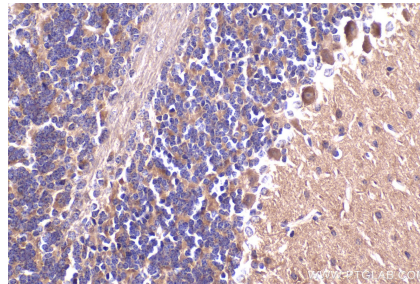
Immunohistochemical analysis of paraffin-embedded human breast cancer tissue slide using 10860-1-AP (PKC zeta antibody at dilution of 1:200 (under 10x lens).



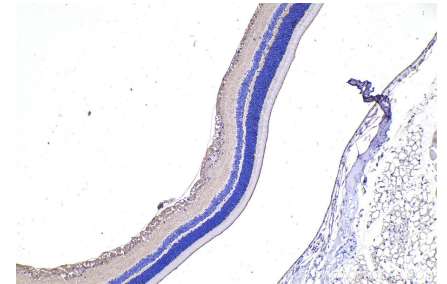
Immunohistochemical analysis of paraffin-embedded human breast cancer tissue slide using 10860-1-AP (PKC zeta antibody at dilution of 1:200 (under 40x lens).



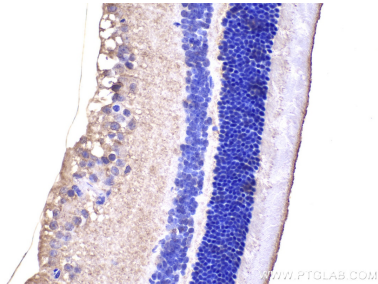
Immunohistochemical analysis of paraffin-embedded mouse cerebellum tissue slide using 10860-1-AP (PKC Zeta antibody) at dilution of 1:1000 (under 10x lens). Heat mediated antigen retrieval with Tris-EDTA buffer (pH 9.0).



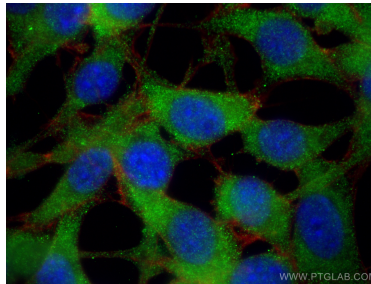
Immunohistochemical analysis of paraffin-embedded mouse cerebellum tissue slide using 10860-1-AP (PKC Zeta antibody) at dilution of 1:1000 (under 40x lens). Heat mediated antigen retrieval with Tris-EDTA buffer (pH 9.0).



Immunohistochemical analysis of paraffin-embedded mouse eye tissue slide using 10860-1-AP (PKC Zeta antibody) at dilution of 1:500 (under 10x lens). Heat mediated antigen retrieval with Tris-EDTA buffer (pH 9.0).



Immunohistochemical analysis of paraffin-embedded mouse eye tissue slide using 10860-1-AP (PKC Zeta antibody) at dilution of 1:500 (under 40x lens). Heat mediated antigen retrieval with Tris-EDTA buffer (pH 9.0).



Immunofluorescent analysis of (-20°C Ethanol) fixed NIH/3T3 cells using PKC Zeta antibody (10860-1-AP) at dilution of 1:200 and Multi-rAb CoraLite® Plus 488-Goat Anti-Rabbit Recombinant Secondary Antibody (H+L) (RGAR002), CL594-Phalloidin (red).