

For Research Use Only

PTGES2 Polyclonal antibody

Catalog Number: 10881-1-AP

Featured Product

14 Publications



Basic Information

Catalog Number:

10881-1-AP

Size:

150ul, Concentration: 400 ug/ml by Nanodrop and 133 ug/ml by Bradford method using BSA as the standard;

Source:

Rabbit

Isotype:

IgG

Immunogen Catalog Number:

AG1329

GenBank Accession Number:

BC011613

GeneID (NCBI):

80142

UNIPROT ID:

Q9H7Z7

Full Name:

prostaglandin E synthase 2

Calculated MW:

42 kDa

Observed MW:

30-35 kDa, 45 kDa

Purification Method:

Antigen affinity purification

Recommended Dilutions:

WB 1:500-1:1000

IP 0.5-4.0 ug for 1.0-3.0 mg of total protein lysate

IHC 1:50-1:500

IF/ICC 1:200-1:800

Applications

Tested Applications:

WB, IHC, IF/ICC, IP, ELISA

Cited Applications:

WB, IHC

Species Specificity:

human, mouse, rat

Cited Species:

human, mouse, rat, caenorhabditis elegans

Note-IHC: suggested antigen retrieval with TE buffer pH 9.0; (*) Alternatively, antigen retrieval may be performed with citrate buffer pH 6.0

Positive Controls:

WB: HeLa cells, HEK-293 cells, HepG2 cells, human stomach tissue, mouse heart tissue

IP: mouse heart tissue,

IHC: human colon cancer tissue, human breast cancer tissue, human heart tissue

IF/ICC: HeLa cells, HepG2 cells

Background Information

PTGES2 (Prostaglandin E synthase 2) catalyzes the conversion of unstable intermediate of prostaglandin E2 H2 (PGH2) into the more stable prostaglandin E2 (PGE2) form. Its predicted size is 42 kDa, but it was detected one band of 35 kDa in the prostate and two bands of 30 kDa, 50 kDa in liver by western blot (PMID:17566096). PTGES2 protein is a homotetramer, whereas two PTGES2 molecules each form a strongly interacting dimer (PMID:19268562).

Notable Publications

Author	Pubmed ID	Journal	Application
Takayuki Nagano	34610503	J Neuroimmunol	WB
Linbin Dai	34500034	Brain Behav Immun	WB
Yongyan Sun	30307357	Int J Radiat Biol	WB

Storage

Storage:

Store at -20°C. Stable for one year after shipment.

Storage Buffer:

PBS with 0.02% sodium azide and 50% glycerol, pH7.3

Aliquoting is unnecessary for -20°C storage

*** 20ul sizes contain 0.1% BSA

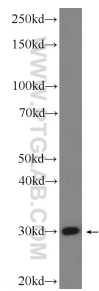
For technical support and original validation data for this product please contact:

T: 1 (888) 4PTGLAB (1-888-478-4522) (toll free in USA), or 1(312) 455-8498 (outside USA)

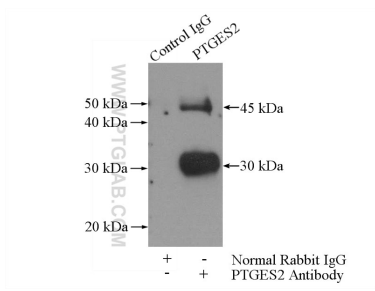
E: proteintech@ptglab.com
W: ptglab.com

This product is exclusively available under Proteintech Group brand and is not available to purchase from any other manufacturer.

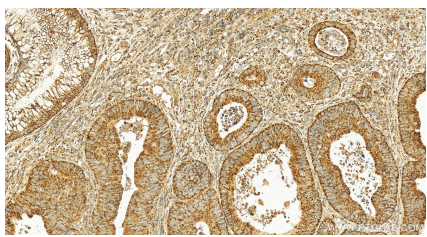
Selected Validation Data



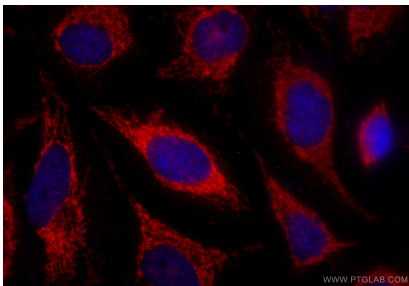
HeLa cells were subjected to SDS PAGE followed by western blot with 10881-1-AP (PTGES2 Antibody) at dilution of 1:600 incubated at room temperature for 1.5 hours.



IP result of anti-PTGES2 (IP:10881-1-AP, 4ug; Detection:10881-1-AP 1:500) with mouse heart tissue lysate 4000ug.



Immunohistochemical analysis of paraffin-embedded human colon cancer tissue slide using 10881-1-AP (PTGES2 antibody) at dilution of 1:200 (under 20x lens). Heat mediated antigen retrieval with Tris-EDTA buffer (pH 9.0).



Immunofluorescent analysis of (-20°C Ethanol) fixed HeLa cells using PTGES2 antibody (10881-1-AP) at dilution of 1:400 and CoraLite®594-Conjugated Goat Anti-Rabbit IgG(H+L) (SA00013-4).