

For Research Use Only

EIF3E Polyclonal ANTIBODY

Catalog Number: 10899-1-AP



Basic Information

Catalog Number: 10899-1-AP	GenBank Accession Number: BC008419	Purification Method: Antigen affinity purification
Size: 150UL, Concentration: 247 µg/ml by Bradford method using BSA as the standard;	GeneID (NCBI): 3646	Recommended Dilutions: WB 1:500-1:1000 IHC 1:20-1:200 IF 1:20-1:200
Source: Rabbit	Full Name: eukaryotic translation initiation factor 3, subunit E	
Isotype: IgG	Calculated MW: 445 aa, 52 kDa	
Immunogen Catalog Number: AG1132	Observed MW: 48-52 kDa	

Applications

Tested Applications:

IF, IHC, WB, ELISA

Species Specificity:

human, mouse, rat

Note-IHC: suggested antigen retrieval with TE buffer pH 9.0; (*) Alternatively, antigen retrieval may be performed with citrate buffer pH 6.0

Positive Controls:

WB: rat lymph tissue, A431 cells, HeLa cells, Jurkat cells, mouse pancreas tissue, mouse thymus tissue

IHC: human pancreas cancer,

IF: SH-SY5Y,

Background Information

Storage

Storage:

Store at -20°C. Stable for one year after shipment.

Storage Buffer:

PBS with 0.1% sodium azide and 50% glycerol pH 7.3.

Aliquoting is unnecessary for -20°C storage

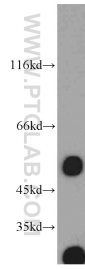
For technical support and original validation data for this product please contact:

T: 1 (888) 4PTGLAB (1-888-478-4522) (toll free in USA), or 1(312) 455-8498 (outside USA)

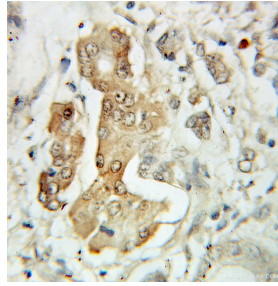
E: proteintech@ptglab.com
W: ptglab.com

This product is exclusively available under Proteintech Group brand and is not available to purchase from any other manufacturer.

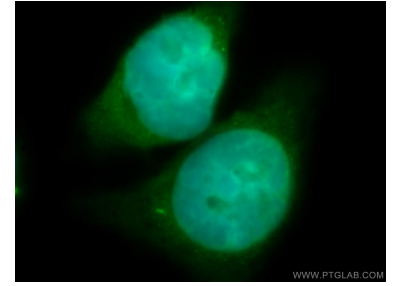
Selected Validation Data



rat lymph tissue were subjected to SDS PAGE followed by western blot with 10899-1-AP (EIF3E antibody) at dilution of 1:100 incubated at room temperature for 1.5 hours.



Immunohistochemical analysis of paraffin-embedded human pancreas cancer using 10899-1-AP (EIF3E antibody) at dilution of 1:100 (under 10x lens).



Immunofluorescent analysis of SH-SY5Y cells, using EIF3E antibody 10899-1-AP at 1:50 dilution and FITC-labeled donkey anti-rabbit IgG (green). Blue pseudocolor = DAPI (fluorescent DNA dye).