

For Research Use Only

Lactotransferrin/LTF Polyclonal antibody

Catalog Number: 10933-1-AP

Featured Product

11 Publications



Basic Information

Catalog Number:

10933-1-AP

Size:

150ul, Concentration: 600 ug/ml by Nanodrop;

Source:

Rabbit

Isotype:

IgG

Immunogen Catalog Number:

AG1379

GenBank Accession Number:

BC015822

GeneID (NCBI):

4057

UNIPROT ID:

P02788

Full Name:

lactotransferrin

Calculated MW:

80 kDa

Observed MW:

30,51,80 kDa

Purification Method:

Antigen affinity purification

Recommended Dilutions:

WB: 1:1000-1:4000

IP: 0.5-4.0 ug for 1.0-3.0 mg of total protein lysate

IHC: 1:20-1:200

Applications

Tested Applications:

WB, IHC, IP, ELISA

Cited Applications:

WB, IHC, IF

Species Specificity:

human

Cited Species:

human, mouse

Note-IHC: suggested antigen retrieval with TE buffer pH 9.0; (*) Alternatively, antigen retrieval may be performed with citrate buffer pH 6.0

Positive Controls:

WB: human saliva, HEK-293 cells, human pancreas tissue

IP: HeLa cells,

IHC: human liver tissue, human prostate hyperplasia tissue

Background Information

LTF (Lactotransferrin) is also named as GIG12, LF and belongs to the transferrin family. It is an iron binding transport protein which can bind two atoms of ferric iron in association with the binding of an anion, usually bicarbonate. LTF is also an important protein component of the innate immune system that is broadly distributed within the body fluids. It can contribute to the activation of both the innate and adaptive immune responses by promoting the recruitment of leukocytes and activation of dendritic cells (PMID:18453607). This protein has 2 isoforms produced by alternative promoter usage. The human LTF can be isolated two fragments, an N-terminal tryptic fragment having an MW of 30 kDa and a C-terminal tryptic fragment having an MW of 50 kDa by a mild tryptic digest (PMID:3790094).

Notable Publications

Author	Pubmed ID	Journal	Application
Qiong Huang	36185743	Bioact Mater	WB
Rujia Qin	34266418	Cancer Cell Int	WB, IHC
Kaoru Araki-Sasaki	30214321	Int Med Case Rep J	IHC

Storage

Storage:

Store at -20°C. Stable for one year after shipment.

Storage Buffer:

PBS with 0.02% sodium azide and 50% glycerol, pH7.3

Aliquoting is unnecessary for -20°C storage

*** 20ul sizes contain 0.1% BSA

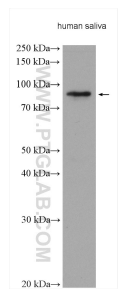
For technical support and original validation data for this product please contact:

T: 1 (888) 4PTGLAB (1-888-478-4522) (toll free in USA), or 1(312) 455-8498 (outside USA)

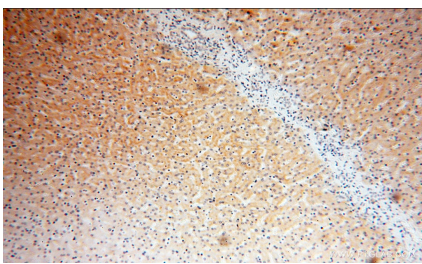
E: proteintech@ptglab.com
W: ptglab.com

This product is exclusively available under Proteintech Group brand and is not available to purchase from any other manufacturer.

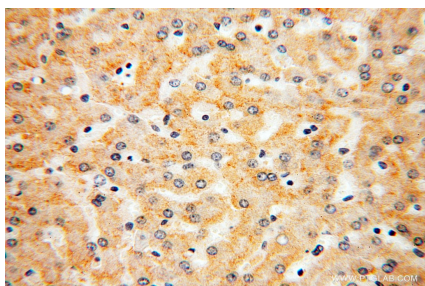
Selected Validation Data



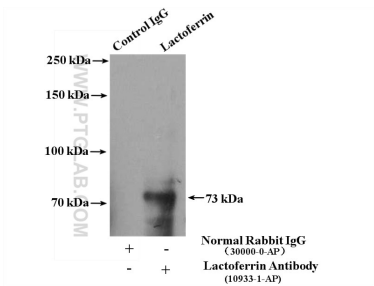
human saliva were subjected to SDS PAGE followed by western blot with 10933-1-AP (Lactoferrin antibody) at dilution of 1:2000 incubated at room temperature for 1.5 hours.



Immunohistochemical analysis of paraffin-embedded human liver using 10933-1-AP (Lactoferrin antibody) at dilution of 1:50 (under 10x lens).



Immunohistochemical analysis of paraffin-embedded human liver using 10933-1-AP (Lactoferrin antibody) at dilution of 1:50 (under 40x lens).



IP result of anti-LTF (IP:10933-1-AP, 4ug; Detection:10933-1-AP 1:600) with HeLa cells lysate 4000ug.