

For Research Use Only

PSMG2 Polyclonal antibody

Catalog Number: 10959-1-AP



Basic Information

Catalog Number: 10959-1-AP	GenBank Accession Number: BC013356	Purification Method: Antigen affinity purification
Size: 150ul , Concentration: 400 µg/ml by Nanodrop and 267 µg/ml by Bradford method using BSA as the standard;	GeneID (NCBI): 56984	Recommended Dilutions: WB 1:500-1:3000 IHC 1:20-1:200
Source: Rabbit	Full Name: proteasome (prosome, macropain) assembly chaperone 2	
IsoType: IgG	Calculated MW: 29 kDa	
Immunogen Catalog Number: AG1400	Observed MW: 29 kDa	

Applications

Tested Applications: IHC, WB, ELISA	Positive Controls: WB : HeLa cells, HepG2 cells IHC : human prostate cancer tissue,
Species Specificity: human, mouse, rat	
Note-IHC: suggested antigen retrieval with TE buffer pH 9.0; (*) Alternatively, antigen retrieval may be performed with citrate buffer pH 6.0	

Background Information

Proteasome assembly chaperone 2 (PSMG2), also named as Hepatocellular carcinoma-susceptibility protein 3, Tumor necrosis factor superfamily member 5-induced protein 1. It has a function as a chaperone protein which promotes assembly of the 20S proteasome as part of a heterodimer with PSMG1. The PSMG1-PSMG2 heterodimer binds to the PSMA5 and PSMA7 proteasome subunits, promotes assembly of the proteasome alpha subunits into the heteroheptameric alpha ring and prevents alpha ring dimerization. It is widely expressed with highest levels in lung, brain and colon, moderately expressed in muscle, stomach, spleen and heart and weakly expressed in small intestine, pancreas and liver, highly expressed in hepatocellular carcinomas with low levels in surrounding liver tissue. Molecular mass of PSMG2 is 29kD.

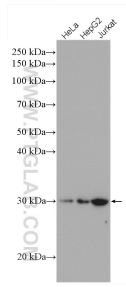
Storage

Storage:
Store at -20°C. Stable for one year after shipment.
Storage Buffer:
PBS with 0.02% sodium azide and 50% glycerol pH 7.3.
Aliquoting is unnecessary for -20°C storage

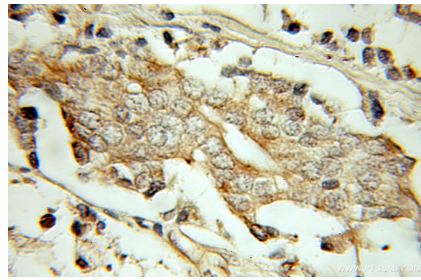
For technical support and original validation data for this product please contact:
T: 1 (888) 4PTGLAB (1-888-478-4522) (toll free in USA), or 1(312) 455-8498 (outside USA) E: proteintech@ptglab.com
W: ptglab.com

This product is exclusively available under Proteintech Group brand and is not available to purchase from any other manufacturer.

Selected Validation Data



Various lysates were subjected to SDS PAGE followed by western blot with 10959-1-AP (PSMG2 antibody) at dilution of 1:1500 incubated at room temperature for 1.5 hours.



Immunohistochemical analysis of paraffin-embedded human prostate cancer using 10959-1-AP (PSMG2 antibody) at dilution of 1:50 (under 10x lens).