

For Research Use Only

FH Polyclonal antibody

Catalog Number: 10966-1-AP

3 Publications



Basic Information

Catalog Number:

10966-1-AP

Size:

150ul, Concentration: 350 ug/ml by Nanodrop and 133 ug/ml by Bradford method using BSA as the standard;

Source:

Rabbit

Isotype:

IgG

Immunogen Catalog Number:

AG1437

GenBank Accession Number:

BC017444

GeneID (NCBI):

2271

UNIPROT ID:

P07954

Full Name:

fumarate hydratase

Calculated MW:

55 kDa

Observed MW:

45-50 kDa

Purification Method:

Antigen affinity purification

Recommended Dilutions:

WB: 1:500-1:2000

IP: 0.5-4.0 ug for 1.0-3.0 mg of total protein lysate

IHC: 1:50-1:500

IF/ICC: 1:50-1:500

Applications

Tested Applications:

WB, IHC, IF/ICC, IP, ELISA

Cited Applications:

WB, IHC, IF

Species Specificity:

human, mouse

Cited Species:

human, mouse

Note-IHC: suggested antigen retrieval with TE buffer pH 9.0; (*) Alternatively, antigen retrieval may be performed with citrate buffer pH 6.0

Positive Controls:

WB : HeLa cells, A431 cells, HEK-293 cells, HepG2 cells, human liver tissue, L02 cells, mouse liver tissue

IP : HepG2 cells,

IHC : human colon tissue, human liver tissue

IF/ICC : HepG2 cells,

Background Information

FH(fumarate hydratase) belongs to the class-II fumarase/aspartase family. It is an enzymatic component of the tricarboxylic acid cycle, catalyzing the conversion of fumarate to malate. FH also acts a tumor suppressor functions of FH in sporadic kidney cancer(PMID:21695080). This protein has 2 isoforms produced by alternative initiation.

Notable Publications

Author	Pubmed ID	Journal	Application
Min Yan	29262542	Oncotarget	WB
Vanida Ann Serna	29700012	Endocr Relat Cancer	IF
Jin Jin	38139831	Pharmaceuticals (Basel)	WB,IHC

Storage

Storage:

Store at -20°C. Stable for one year after shipment.

Storage Buffer:

PBS with 0.02% sodium azide and 50% glycerol, pH7.3

Aliquoting is unnecessary for -20°C storage

*** 20ul sizes contain 0.1% BSA

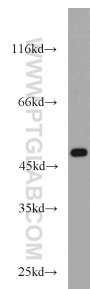
For technical support and original validation data for this product please contact:

T: 1 (888) 4PTGLAB (1-888-478-4522) (toll free in USA), or 1(312) 455-8498 (outside USA)

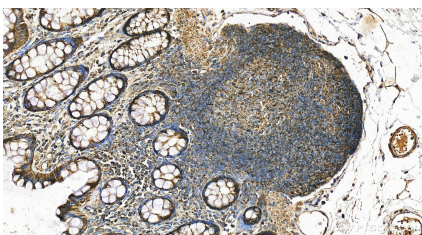
E: proteintech@ptglab.com
W: ptglab.com

This product is exclusively available under Proteintech Group brand and is not available to purchase from any other manufacturer.

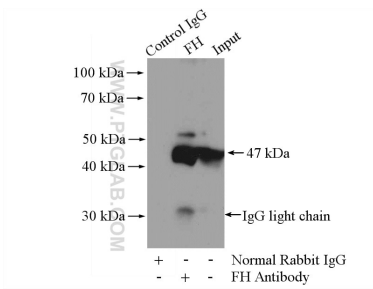
Selected Validation Data



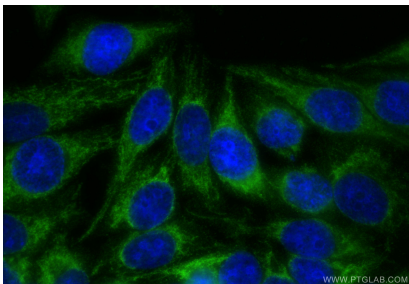
HeLa cells were subjected to SDS PAGE followed by western blot with 10966-1-AP (FH antibody) at dilution of 1:1000 incubated at room temperature for 1.5 hours.



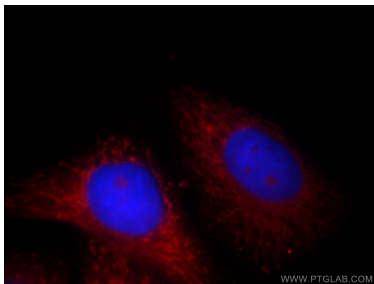
Immunohistochemical analysis of paraffin-embedded human colon tissue slide using 10966-1-AP (FH antibody) at dilution of 1:200 (under 20x lens). Heat mediated antigen retrieval with Tris-EDTA buffer (pH 9.0).



IP result of anti-FH (IP:10966-1-AP, 4ug; Detection:10966-1-AP 1:1000) with HepG2 cells lysate 2400ug.



Immunofluorescent analysis of (-20°C Ethanol) fixed HepG2 cells using FH antibody (10966-1-AP) at dilution of 1:200 and CoraLite®488-Conjugated Goat Anti-Rabbit IgG(H+L) (SA00013-2).



Immunofluorescent analysis of HepG2 cells, using FH antibody 10966-1-AP at 1:25 dilution and Rhodamine-labeled goat anti-rabbit IgG (red).Blue pseudocolor = DAPI (fluorescent DNA dye).