

For Research Use Only

PABPC1, PABP Polyclonal ANTIBODY



Catalog Number: 10970-1-AP

Featured Product

4 Publications

Basic Information

Catalog Number:

10970-1-AP

Size:

150UL, Concentration: 333 µg/ml by Bradford method using BSA as the standard;

Source:

Rabbit

Isotype:

IgG

Immunogen Catalog Number:

AG1422

GenBank Accession Number:

BC015958

GeneID (NCBI):

26986

Full Name:

poly(A) binding protein, cytoplasmic 1

Calculated MW:

71 kDa

Observed MW:

71 kDa

Purification Method:

Antigen affinity purification

Recommended Dilutions:

WB 1:1000-1:5000

IP 0.5-4.0 µg for IP and 1:500-1:1000 for WB

IHC 1:20-1:200

IF 1:10-1:100

Applications

Tested Applications:

FC, IF, IHC, IP, WB, ELISA

Cited Applications:

IF, WB

Species Specificity:

human, mouse, rat

Cited Species:

human

Note-IHC: suggested antigen retrieval with TE buffer pH 9.0; (*) Alternatively, antigen retrieval may be performed with citrate buffer pH 6.0

Positive Controls:

WB: HCT 116 cells, mouse testis tissue, rat testis tissue, PC-3 cells, HeLa cells

IP: mouse testis tissue,

IHC: human pancreas tissue, human testis tissue

IF: MCF-7 cells,

Background Information

The poly(A)-binding protein (PABP), which is found complexed to the 3-prime poly(A) tail of eukaryotic mRNA, is required for poly(A) shortening and translation initiation [PMID: 21989405]. Polyadenylate-binding protein 1 (PABPC1) is a cytoplasmic-nuclear shuttling protein important for protein translation initiation, and both RNA processing and stability. In the cytoplasm, PABPC1 binds to the 3' poly(A) tail of eukaryotic mRNAs through its RNA-recognition motifs (RRM) and interacts with the N-terminus of eIF4G, part of the eIF4F complex associated with the 5' cap structure [PMID:20009508, 17381337].

Notable Publications

Author	Pubmed ID	Journal	Application
S Prpar Mihevc	27665936	Sci Rep	WB,IF
Erika C Urdaneta	30824702	Nat Commun	WB
Song Zhu	32245947	Nat Commun	WB

Storage

Storage:

Store at -20°C. Stable for one year after shipment.

Storage Buffer:

PBS with 0.02% sodium azide and 50% glycerol pH 7.3.

Aliquoting is unnecessary for -20°C storage

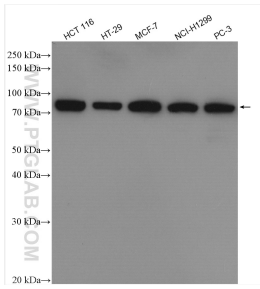
For technical support and original validation data for this product please contact:

T: 1 (888) 4PTGLAB (1-888-478-4522) (toll free in USA), or 1(312) 455-8498 (outside USA)

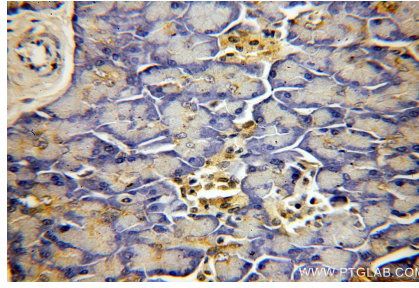
E: proteintech@ptglab.com
W: ptglab.com

This product is exclusively available under Proteintech Group brand and is not available to purchase from any other manufacturer.

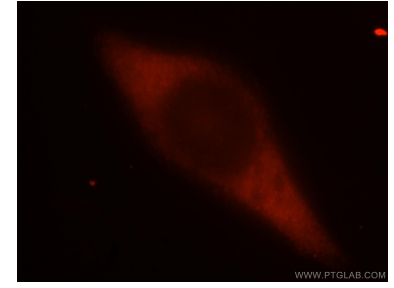
Selected Validation Data



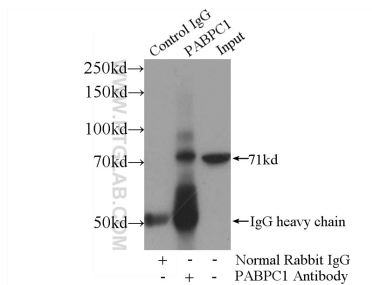
Various lysates were subjected to SDS PAGE followed by western blot with 10970-1-AP (PABPC1,PABP antibody) at dilution of 1:2500 incubated at room temperature for 1.5 hours.



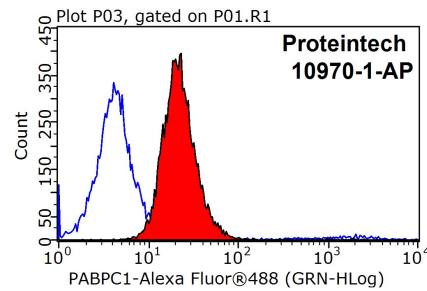
Immunohistochemical analysis of paraffin-embedded human pancreas using 10970-1-AP (PABPC1,PABP antibody) at dilution of 1:50 (under 40x lens).



Immunofluorescent analysis of MCF-7 cells, using PABPC1 antibody 10970-1-AP at 1:25 dilution and Rhodamine-labeled goat anti-rabbit IgG (red).



IP Result of anti-PABPC1,PABP (IP:10970-1-AP, 4ug; Detection:10970-1-AP 1:700) with mouse testis tissue lysate 4000ug.



1X10⁶ MCF-7 cells were stained with 0.2ug PABPC1,PABP antibody (10970-1-AP, red) and control antibody (blue). Fixed with 90% MeOH blocked with 3% BSA (30 min). Alexa Fluor 488-conjugated AffiniPure Goat Anti-Rabbit IgG(H+L) with dilution 1:1000.