

For Research Use Only

Fc Epsilon RI Alpha Polyclonal antibody



Catalog Number: 10980-1-AP

6 Publications

Basic Information

Catalog Number: 10980-1-AP	GenBank Accession Number: BC015195	Purification Method: Antigen affinity purification
Size: 150ul , Concentration: 350 µg/ml by Nanodrop and 233 µg/ml by Bradford method using BSA as the standard;	GeneID (NCBI): 2205	Recommended Dilutions: WB 1:500-1:1000
Source: Rabbit	Full Name: Fc fragment of IgE, high affinity I, receptor for; alpha polypeptide	
Isotype: IgG	Calculated MW: 30 kDa	
Immunogen Catalog Number: AG1398	Observed MW: 55 kDa	

Applications

Tested Applications: WB, ELISA	Positive Controls: WB : human spleen tissue, PC-3 cells, RAW 264.7 cells
Cited Applications: IF, IHC, WB	
Species Specificity: human, mouse	
Cited Species: human, mouse	

Background Information

Fc fragment of IgE, high affinity I, receptor for, alpha polypeptide, also known as high affinity immunoglobulin epsilon receptor subunit alpha, FCER1A and FCE1A, is a single-pass type I membrane protein which contains 2 immunoglobulin-like domains. FCER1A is a subunit of the IgE receptor, which is composed of one glycosylated alpha (FCER1A), one beta (FCER1B), and two gamma (FCER1G) subunits. The high affinity IgE receptor plays a central role in allergic disease, coupling allergen and mast cell to initiate the inflammatory and immediate hypersensitivity responses that are characteristic of disorders such as hay fever and asthma.

Notable Publications

Author	Pubmed ID	Journal	Application
Yunsheng Liang	31251950	J Allergy Clin Immunol	WB
Hongmei Zhao	34158869	Theranostics	WB
Sachiko Taniguchi	33833096	Science	IF

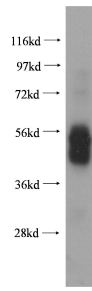
Storage

Storage:
Store at -20°C. Stable for one year after shipment.
Storage Buffer:
PBS with 0.02% sodium azide and 50% glycerol pH 7.3.
Aliquoting is unnecessary for -20°C storage

For technical support and original validation data for this product please contact:
T: 1 (888) 4PTGLAB (1-888-478-4522) (toll free in USA), or 1(312) 455-8498 (outside USA)
E: proteintech@ptglab.com
W: ptglab.com

This product is exclusively available under Proteintech Group brand and is not available to purchase from any other manufacturer.

Selected Validation Data



human spleen tissue were subjected to SDS PAGE followed by western blot with 10980-1-AP (Fc epsilon RI alpha antibody) at dilution of 1:800 incubated at room temperature for 1.5 hours.