

Cytochrome c Polyclonal ANTIBODY

Catalog Number: 10993-1-AP

153 Publications

Basic Information

Catalog Number:
10993-1-AP

Size:
37 µg/150 µl

Source:
Rabbit

Isotype:
IgG

Purification Method:
Antigen affinity purification

Immunogen Catalog Number:
AG1455

GenBank Accession Number:
BC009578

GeneID (NCBI):
54205

Full Name:
cytochrome c, somatic

Calculated MW:
12 kDa

Observed MW:
12-15 kDa

Recommended Dilutions:

WB 1:500-1:1000

IHC 1:50-1:500

Applications

Tested Applications:

IHC, WB, ELISA

Cited Applications:

IF, IHC, WB

Species Specificity:

human, mouse, rat

Cited Species:

chicken, hamsters, Hippospongia sp, human,
mouse, rat, rice, sheep, swine

**Note-IHC: suggested antigen retrieval with
TE buffer pH 9.0; (*) Alternatively, antigen
retrieval may be performed with citrate
buffer pH 6.0**

Positive Controls:

WB : rat skeletal muscle tissue; MCF-7 cells,
mouse kidney tissue, mouse skeletal muscle tissue,
rat liver tissue, HEK-293 cells, NIH/3T3 cells

IHC : human colon cancer tissue; human breast
cancer tissue, human liver tissue

Background Information

Cytochrome c is a 12-15 kDa electron transporting protein located in the inner mitochondrial membrane. As a part of respiratory chain, cytochrome c plays a critical role in the process of oxidative phosphorylation and ATP producing. Besides, cytochrome c also gets implicated in apoptosis process. Upon apoptotic stimulation, cytochrome c can be released from mitochondria into cytoplasm, which is required for caspase-3 activation and the occurrence of apoptosis.

Notable Publications

Author	Pubmed ID	Journal	Application
Xinxin Yan	27684494	J Biomed Mater Res A	WB
Jiangjiang Fan	30246250	J Cell Physiol	WB
Yanan Li	27663303	BMC Microbiol	WB

Storage

Storage:

Store at -20°C. Stable for one year after shipment.

Storage Buffer:

PBS with 0.1% sodium azide and 50% glycerol pH 7.3.

Aliquoting is unnecessary for -20°C storage

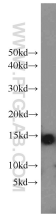
For technical support and original validation data for this product please contact:

T: 1 (888) 4PTGLAB (1-888-478-4522) (toll free in USA), or 1(312) 455-8498 (outside USA)

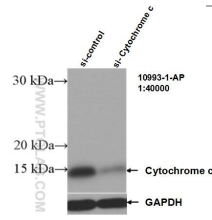
E: proteintech@ptglab.com
W: ptglab.com

This product is exclusively available under Proteintech Group brand and is not available to purchase from any other manufacturer.

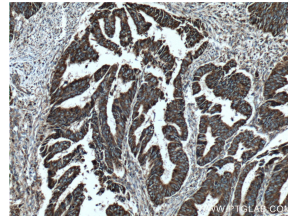
Selected Validation Data



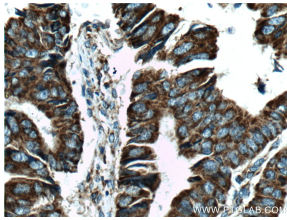
rat skeletal muscle tissue were subjected to SDS PAGE followed by western blot with 10993-1-AP(CYCS antibody) at dilution of 1:800 incubated at room temperature for 1.5 hours



WB result of Cytochrome c antibody (10993-1-AP; 1:40000; incubated at room temperature for 1.5 hours) with sh-Control and sh-Cytochrome c transfected HEK-293 cells



Immunohistochemical analysis of paraffin-embedded human colon cancer tissue slide using 10993-1-AP(Cytochrome c Antibody) at dilution of 1:200 (under 10x lens), heat mediated antigen retrieved with Tris-EDTA buffer(pH9).



Immunohistochemical analysis of paraffin-embedded human colon cancer tissue slide using 10993-1-AP(Cytochrome c Antibody) at dilution of 1:200 (under 40x lens), heat mediated antigen retrieved with Tris-EDTA buffer(pH9).