

For Research Use Only

# POLG2 Polyclonal antibody

Catalog Number: 10997-2-AP

Featured Product

2 Publications



## Basic Information

<b>Catalog Number:</b> 10997-2-AP	<b>GenBank Accession Number:</b> BC009194	<b>Purification Method:</b> Antigen affinity purification
<b>Size:</b> 150ul , Concentration: 500 µg/ml by Nanodrop and 250 µg/ml by Bradford method using BSA as the standard;	<b>GeneID (NCBI):</b> 11232	<b>Recommended Dilutions:</b> WB 1:500-1:2000 IHC 1:20-1:200 IF 1:10-1:100
<b>Source:</b> Rabbit	<b>Full Name:</b> polymerase (DNA directed), gamma 2, accessory subunit	
<b>Isotype:</b> IgG	<b>Calculated MW:</b> 55 kDa	
<b>Immunogen Catalog Number:</b> AG1424	<b>Observed MW:</b> 55 kDa	

## Applications

### Tested Applications:

IF, IHC, WB, ELISA

### Cited Applications:

WB

### Species Specificity:

human, mouse, rat

### Cited Species:

human, mouse

**Note-IHC: suggested antigen retrieval with TE buffer pH 9.0; (\*) Alternatively, antigen retrieval may be performed with citrate buffer pH 6.0**

### Positive Controls:

WB : COLO 320 cells, mouse colon tissue, HeLa cells

IHC : human colon cancer tissue,

IF : COLO 320 cells,

## Background Information

POLG2(DNA polymerase subunit gamma-2, mitochondrial) can stimulate the polymerase and exonuclease activities. Defects in POLG2 are the cause of progressive external ophthalmoplegia with mitochondrial DNA deletions autosomal dominant type 4 (PEOA4) [MIM:610131]. Western blot result suggested that the POLG2 expressed in human fetal kidney and U-251 MG cell lines with a single band of 55kd.

## Notable Publications

Author	Pubmed ID	Journal	Application
Yura Do	32470614	Mitochondrion	WB
Xinbin Zhao	28397817	Sci Rep	WB

## Storage

### Storage:

Store at -20°C. Stable for one year after shipment.

### Storage Buffer:

PBS with 0.02% sodium azide and 50% glycerol pH 7.3.

Aliquoting is unnecessary for -20°C storage

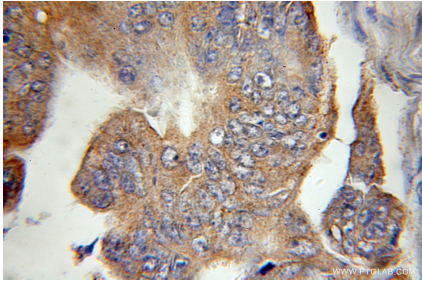
For technical support and original validation data for this product please contact:

T: 1 (888) 4PTGLAB (1-888-478-4522) (toll free in USA), or 1(312) 455-8498 (outside USA)

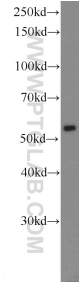
E: [proteintech@ptglab.com](mailto:proteintech@ptglab.com)  
W: [ptglab.com](http://ptglab.com)

**This product is exclusively available under Proteintech Group brand and is not available to purchase from any other manufacturer.**

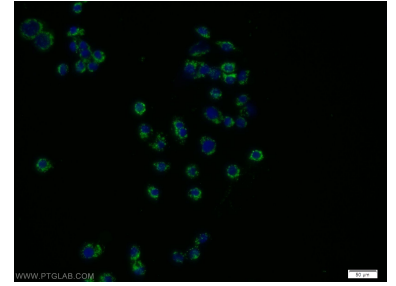
## Selected Validation Data



Immunohistochemical analysis of paraffin-embedded human colon cancer using 10997-2-AP (POLG2 antibody) at dilution of 1:100 (under 10x lens).



COLO 320 cells were subjected to SDS PAGE followed by western blot with 10997-2-AP (POLG2 Antibody) at dilution of 1:1000 incubated at room temperature for 1.5 hours.



Immunofluorescent analysis of COLO 320 cells using 10997-2-AP (POLG2 antibody) at dilution of 1:25 and Alexa Fluor 488-conjugated AffiniPure Goat Anti-Rabbit IgG(H+L).