

For Research Use Only

# TPM2 Polyclonal antibody

Catalog Number: 11038-1-AP

Featured Product

6 Publications



## Basic Information

### Catalog Number:

11038-1-AP

### Size:

150ul, Concentration: 300 ug/ml by Nanodrop;

### Source:

Rabbit

### Isotype:

IgG

### Immunogen Catalog Number:

AG1508

### GenBank Accession Number:

BC011776

### GeneID (NCBI):

7169

### UNIPROT ID:

P07951

### Full Name:

tropomyosin 2 (beta)

### Calculated MW:

33 kDa

### Observed MW:

29-33 kDa

### Purification Method:

Antigen affinity purification

### Recommended Dilutions:

WB 1:1000-1:4000

IP 0.5-4.0 ug for 1.0-3.0 mg of total protein lysate

IHC 1:50-1:500

IF/ICC 1:50-1:500

## Applications

### Tested Applications:

WB, IHC, IF/ICC, IP, ELISA

### Cited Applications:

WB, IHC, IP

### Species Specificity:

human, mouse, rat

### Cited Species:

human, mouse, rat

### Positive Controls:

**WB** : HT-1080 cells, HeLa cells, mouse skeletal muscle, rat skeletal muscle

**IP** : mouse skeletal muscle tissue,

**IHC** : human breast cancer tissue, human heart tissue, human skeletal muscle tissue, mouse heart tissue

**IF/ICC** : HepG2 cells,

**Note-IHC: suggested antigen retrieval with TE buffer pH 9.0; (\*) Alternatively, antigen retrieval may be performed with citrate buffer pH 6.0**

## Background Information

TPM2, also named as TMSB, belongs to the tropomyosin family. It binds to actin filaments in muscle and non-muscle cells. TPM2 plays a central role, in association with the troponin complex, in the calcium dependent regulation of vertebrate striated muscle contraction. In non-muscle cells, TPM2 is implicated in stabilizing cytoskeleton actin filaments. Defects in TPM2 are the cause of nemaline myopathy type 4 (NEM4) and distal arthrogryposis type 1 (DA1).

## Notable Publications

Author	Pubmed ID	Journal	Application
Clarissa Corinaldesi	39424708	Leukemia	IHC
Beatrice Vahle	38928324	Int J Mol Sci	WB
Chi-Lee C Ho	38669694	Cancer Prev Res (Phila)	WB

## Storage

### Storage:

Store at -20°C. Stable for one year after shipment.

### Storage Buffer:

PBS with 0.02% sodium azide and 50% glycerol pH 7.3.

Aliquoting is unnecessary for -20°C storage

\*\*\* 20ul sizes contain 0.1% BSA

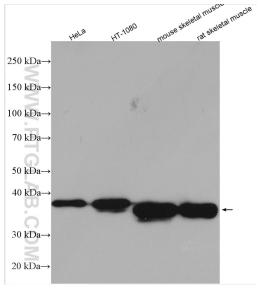
For technical support and original validation data for this product please contact:

T: 1 (888) 4PTGLAB (1-888-478-4522) (toll free in USA), or 1(312) 455-8498 (outside USA)

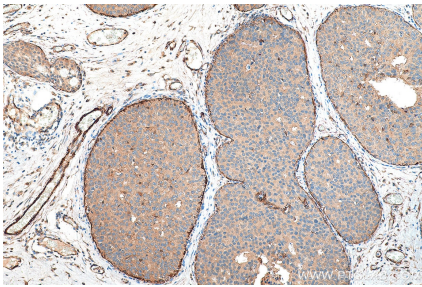
E: [proteintech@ptglab.com](mailto:proteintech@ptglab.com)  
W: [ptglab.com](http://ptglab.com)

This product is exclusively available under Proteintech Group brand and is not available to purchase from any other manufacturer.

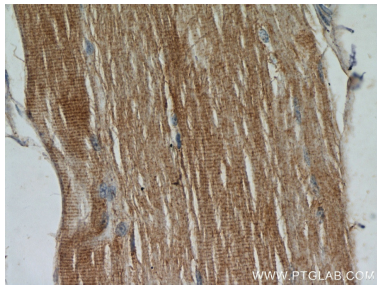
Selected Validation Data



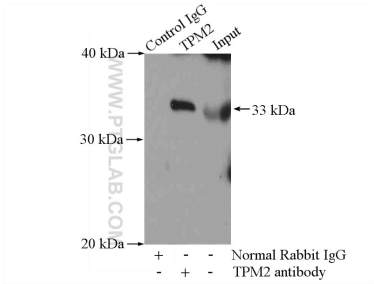
Various lysates were subjected to SDS PAGE followed by western blot with 11038-1-AP (TPM2 antibody) at dilution of 1:2000 incubated at room temperature for 1.5 hours.



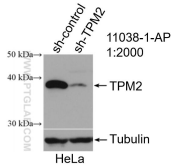
Immunohistochemical analysis of paraffin-embedded human breast cancer tissue slide using 11038-1-AP (TPM2 antibody) at dilution of 1:200 (under 10x lens). Heat mediated antigen retrieval with Tris-EDTA buffer (pH 9.0).



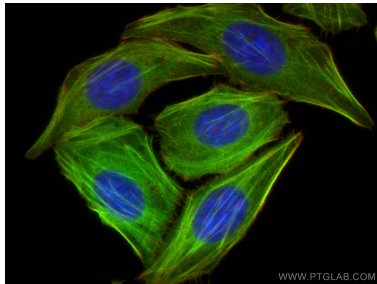
Immunohistochemical analysis of paraffin-embedded human skeletal muscle using 11038-1-AP (TPM2 antibody) at dilution of 1:50 (under 40x lens).



IP result of anti-TPM2 (IP:11038-1-AP, 4ug; Detection:11038-1-AP 1:500) with mouse skeletal muscle tissue lysate 3600ug.



WB result of TPM2 antibody (11038-1-AP; 1:2000; incubated at room temperature for 1.5 hours) with sh-Control and sh-TPM2 transfected HeLa cells.



Immunofluorescent analysis of (4% PFA) fixed HepG2 cells using TPM2 antibody (11038-1-AP) at dilution of 1:200 and CoraLite®488-Conjugated Goat Anti-Rabbit IgG(H+L), CL594-Phalloidin (red).