

For Research Use Only

IGFBP2 Polyclonal ANTIBODY



Catalog Number: 11065-3-AP

Featured Product

3 Publications

Basic Information

Catalog Number:
11065-3-AP

Size:
20 µg/150 µl

Source:
Rabbit

Isotype:
IgG

Purification Method:
Antigen affinity purification

Immunogen Catalog Number:
AG1535

GenBank Accession Number:
BC009902

GeneID (NCBI):
3485

Full Name:
insulin-like growth factor binding protein 2,
36kDa

Calculated MW:
35 kDa

Observed MW:
33-36 kDa

Recommended Dilutions:

WB : 1:500-1:2000

IP 0.5-4.0 µg for IP and 1:200-1:1000 for WB

IHC 1:20-1:200

Applications

Tested Applications:

IHC, IP, WB, ELISA

Cited Applications:

WB

Species Specificity:

human, mouse

Cited Species:

chicken, mouse

**Note: suggested antigen retrieval with TE
buffer pH 9.0; (*) Alternatively, antigen
retrieval may be performed with citrate
buffer pH 6.0**

Positive Controls:

WB : SH-SY5Y cells;

IP : SH-SY5Y cells;

IHC : human prostate cancer tissue;

Background Information

Insulin-like growth factors (IGFs) and their binding proteins (IGFBPs) have important metabolic roles in the human body. IGFBP-2 is a 34 kD IGFBP protein with degraded fragments of 24 kD, 19kD and 15kD. The levels of IGFBP2 are elevated during progression of many human cancers.

Notable Publications

Author	Pubmed ID	Journal	Application
Hyunho Kim	25405894	Nat Commun	WB
Jie Yang	28734787	Cell Signal	WB
Zhijun Wang	30999686	Cells	WB

Storage

Storage:

Store at -20°C. Stable for one year after shipment.

Storage Buffer:

PBS with 0.1% sodium azide and 50% glycerol pH 7.3.

Aliquoting is unnecessary for -20°C storage

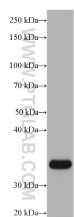
For technical support and original validation data for this product please contact:

T: 1 (888) 4PTGLAB (1-888-478-4522) (toll free in USA), or 1(312) 455-8498 (outside USA)

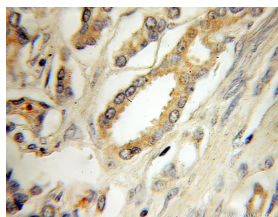
E: proteintech@ptglab.com
W: ptglab.com

This product is exclusively available under Proteintech Group brand and is not available to purchase from any other manufacturer.

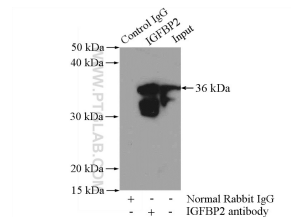
Selected Validation Data



SH-SY5Y cells were subjected to SDS PAGE followed by western blot with 11065-3-AP (IGFBP2 antibody) at dilution of 1:1000 incubated at room temperature for 1.5 hours



Immunohistochemical analysis of paraffin-embedded human prostate cancer using 11065-3-AP(IGFBP2 antibody) at dilution of 1:50 (under 10x lens)



IP Result of anti-IGFBP2 (IP:11065-3-AP, 4ug; Detection: 11065-3-AP 1:300) with SH-SY5Y cells lysate 1200ug.