

For Research Use Only

NME1 Polyclonal antibody

Catalog Number: 11086-2-AP

13 Publications



Basic Information

Catalog Number:

11086-2-AP

Size:

150ul, Concentration: 550 ug/ml by Nanodrop and 347 ug/ml by Bradford method using BSA as the standard;

Source:

Rabbit

Isotype:

IgG

Immunogen Catalog Number:

AG1548

GenBank Accession Number:

BC018994

GeneID (NCBI):

4830

UNIPROT ID:

P15531

Full Name:

non-metastatic cells 1, protein (NM23A) expressed in

Calculated MW:

17 kDa

Observed MW:

16-20 kDa

Purification Method:

Antigen affinity purification

Recommended Dilutions:

WB: 1:500-1:2000

IP: 0.5-4.0 ug for 1.0-3.0 mg of total protein lysate

IHC: 1:20-1:200

IF/ICC: 1:20-1:200

Applications

Tested Applications:

WB, IHC, IF/ICC, IP, ELISA

Cited Applications:

WB, IHC, IF, CoIP, ChIP

Species Specificity:

human

Cited Species:

human

Positive Controls:

WB: HeLa cells, multi-cells

IP: A549 cells,

IHC: human lung cancer tissue, human pancreas cancer tissue

IF/ICC: MCF-7 cells,

Note-IHC: suggested antigen retrieval with TE buffer pH 9.0; (*) Alternatively, antigen retrieval may be performed with citrate buffer pH 6.0

Background Information

NME1 is also named as NDPKA(Nucleoside diphosphate kinase A), NM23(Metastasis inhibition factor nm23),GAAD(Granzyme A-activated DNase) and belongs to the NDK family.It is a major role in the synthesis of nucleoside triphosphates other than ATP and required for neural development including neural patterning and cell fate determination.It has 3 isoforms produced by alternative splicing.

Notable Publications

Author	Pubmed ID	Journal	Application
Anna Bianchi-Smiraglia	34667203	Nat Commun	WB
Marianna Naki	35563580	Int J Mol Sci	CoIP
Hongyuan Zhao	33786631	Oncol Rep	IF

Storage

Storage:

Store at -20°C. Stable for one year after shipment.

Storage Buffer:

PBS with 0.02% sodium azide and 50% glycerol, pH7.3

Aliquoting is unnecessary for -20°C storage

*** 20ul sizes contain 0.1% BSA

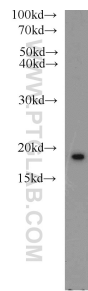
For technical support and original validation data for this product please contact:

T: 1 (888) 4PTGLAB (1-888-478-4522) (toll free in USA), or 1(312) 455-8498 (outside USA)

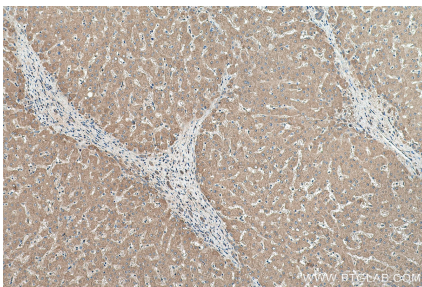
E: proteintech@ptglab.com
W: ptglab.com

This product is exclusively available under Proteintech Group brand and is not available to purchase from any other manufacturer.

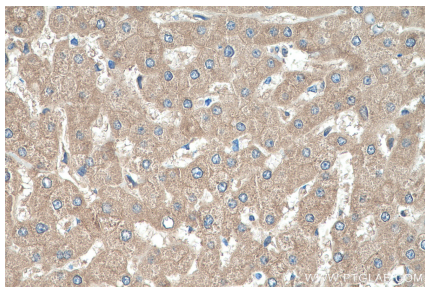
Selected Validation Data



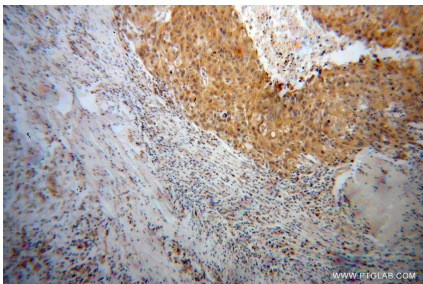
HeLa cells were subjected to SDS PAGE followed by western blot with 11086-2-AP (NME1 antibody) at dilution of 1:1500 incubated at room temperature for 1.5 hours.



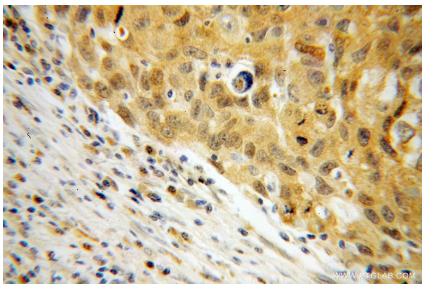
Immunohistochemical analysis of paraffin-embedded human liver tissue slide using 11086-2-AP (NME1 antibody) at dilution of 1:500 (under 10x lens). Heat mediated antigen retrieval with Tris-EDTA buffer (pH 9.0).



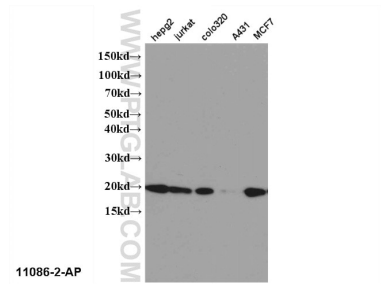
Immunohistochemical analysis of paraffin-embedded human liver tissue slide using 11086-2-AP (NME1 antibody) at dilution of 1:500 (under 40x lens). Heat mediated antigen retrieval with Tris-EDTA buffer (pH 9.0).



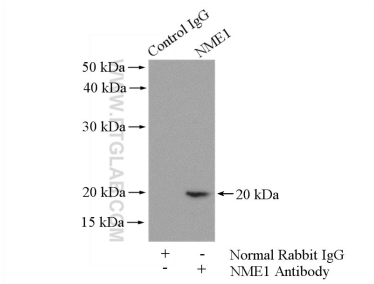
Immunohistochemical analysis of paraffin-embedded human lung cancer using 11086-2-AP (NME1 antibody) at dilution of 1:100 (under 10x lens).



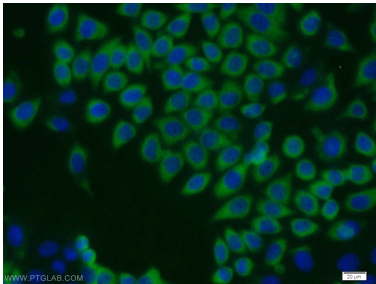
Immunohistochemical analysis of paraffin-embedded human lung cancer using 11086-2-AP (NME1 antibody) at dilution of 1:100 (under 40x lens).



WB result of 11086-2-AP (NME1 antibody).



IP result of anti-NME1 (IP:11086-2-AP, 4ug; Detection:11086-2-AP 1:500) with A549 cells lysate 2800ug.



Immunofluorescent analysis of MCF-7 cells using 11086-2-AP (NME1 antibody) at dilution of 1:50 and Alexa Fluor 488-conjugated Goat Anti-Rabbit IgG(H+L).