

For Research Use Only

# EMAP II Polyclonal antibody

Catalog Number: 11091-1-AP **2 Publications**



## Basic Information

**Catalog Number:**

11091-1-AP

**Size:**

150UL, Concentration: 133 µg/ml by Bradford method using BSA as the standard;

**Source:**

Rabbit

**Isotype:**

IgG

**Immunogen Catalog Number:**

AG1560

**GenBank Accession Number:**

BC014051

**GeneID (NCBI):**

9255

**Full Name:**

small inducible cytokine subfamily E, member 1 (endothelial monocyte-activating)

**Calculated MW:**

34 kDa

**Observed MW:**

34 kDa and 68 kDa

**Purification Method:**

Antigen affinity purification

**Recommended Dilutions:**

WB 1:500-1:2000

IP 0.5-4.0 µg for IP and 1:500-1:1000

for WB

IHC 1:50-1:500

IF 1:50-1:500

## Applications

**Tested Applications:**

IF, IHC, IP, WB, ELISA

**Cited Applications:**

WB

**Species Specificity:**

human, mouse

**Cited Species:**

human

**Note-IHC: suggested antigen retrieval with TE buffer pH 9.0; (\*) Alternatively, antigen retrieval may be performed with citrate buffer pH 6.0**

**Positive Controls:**

**WB:** HeLa cells, SGC-7901 cells, SH-SY5Y cells, U-251 cells, mouse brain tissue

**IP:** SGC-7901 cells,

**IHC:** human cervical cancer tissue,

**IF:** HeLa cells,

## Background Information

SCYE1 (small inducible cytokine subfamily E, member 1) is also named as EMAP2, AIMP1. The human cDNA encodes a 312-amino acid polypeptide that the predicted 34-kDa precursor can be cleaved to produce an active 20-kDa product (PMID:7929199). SCYE1 is secreted as a result of various stimuli, including TNF-α, heat shock, and hypoxia, and that it acts as a multifunctional cytokine on both endothelial and immune cells (PMID:18292511). Defects in AIMP1 are the cause of leukodystrophy hypomyelinating type 3 (HLD3). It has 2 isoforms produced by alternative splicing and the protein can exist as a dimer (PMID:11306575).

## Notable Publications

Author	Pubmed ID	Journal	Application
Wei Gao	31287215	Proteomics	WB
Dalia Halawani	29643180	J Biol Chem	WB

## Storage

**Storage:**

Store at -20°C. Stable for one year after shipment.

**Storage Buffer:**

PBS with 0.1% sodium azide and 50% glycerol pH 7.3.

Aliquoting is unnecessary for -20°C storage

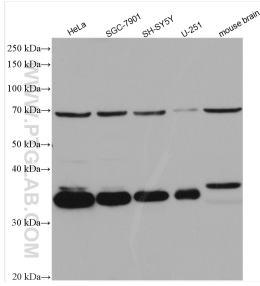
For technical support and original validation data for this product please contact:

T: 1 (888) 4PTGLAB (1-888-478-4522) (toll free in USA), or 1(312) 455-8498 (outside USA)

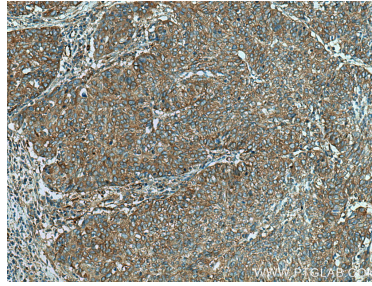
E: proteintech@ptglab.com  
W: ptglab.com

**This product is exclusively available under Proteintech Group brand and is not available to purchase from any other manufacturer.**

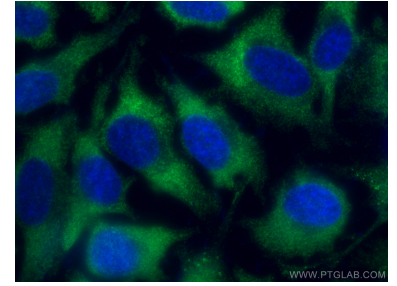
## Selected Validation Data



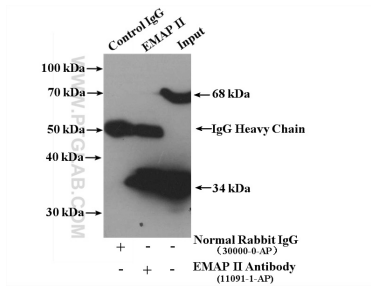
Various lysates were subjected to SDS PAGE followed by western blot with 11091-1-AP (EMAP II antibody) at dilution of 1:1000 incubated at room temperature for 1.5 hours.



Immunohistochemical analysis of paraffin-embedded human cervical cancer tissue slide using 11091-1-AP (EMAP II antibody) at dilution of 1:200 (under 10x lens). Heat mediated antigen retrieval with Tris-EDTA buffer (pH 9.0).



Immunofluorescent analysis of (-20°C Ethanol) fixed HeLa cells using EMAP II antibody (11091-1-AP) at dilution of 1:0 and CoraLite®488-Conjugated AffiniPure Goat Anti-Rabbit IgG(H+L).



IP result of anti-EMAP II (IP:11091-1-AP, 4ug; Detection:11091-1-AP 1:500) with SGC-7901 cells lysate 2200 ug.