

For Research Use Only

Rab23 Polyclonal antibody

Catalog Number: 11101-1-AP

Featured Product

14 Publications



Basic Information

Catalog Number:

11101-1-AP

Size:

150ul, Concentration: 500 ug/ml by Nanodrop and 313 ug/ml by Bradford method using BSA as the standard;

Source:

Rabbit

Isotype:

IgG

Immunogen Catalog Number:

AG1588

GenBank Accession Number:

BC015021

GeneID (NCBI):

51715

UNIPROT ID:

Q9ULC3

Full Name:

RAB23, member RAS oncogene family

Calculated MW:

237 aa, 27 kDa

Observed MW:

27 kDa

Purification Method:

Antigen affinity purification

Recommended Dilutions:

WB 1:500-1:2000

IP 0.5-4.0 ug for 1.0-3.0 mg of total protein lysate

IHC 1:50-1:500

Applications

Tested Applications:

WB, IP, IHC, ELISA

Cited Applications:

WB, IHC, IF

Species Specificity:

human, mouse, rat

Cited Species:

human, mouse, chicken

Note-IHC: suggested antigen retrieval with TE buffer pH 9.0; (*) Alternatively, antigen retrieval may be performed with citrate buffer pH 6.0

Positive Controls:

WB : mouse brain tissue, rat brain tissue, HEK-293 cells, human brain tissue

IP : mouse brain tissue,

IHC : human liver cancer tissue,

Background Information

Rab23 is a novel member of large Rab small GTPase family. It plays important roles during embryonic development. The brain-enriched Rab23 is the only Rab protein that is known to have a distinct function during central nervous system development, playing an essential role as a negative regulator of the Sonic Hedgehog (Shh) pathway. RAB23 has recently been identified in mesangial cells (MCs), and could serve as a biomarker that indicates the severity of FSGS (focal segmental glomerulosclerosis). Mutations in RAB23 may result in ACP52 (acrocephalopolysyndactyly type 2).

Notable Publications

Author	Pubmed ID	Journal	Application
Andreas Gerondopoulos	31564489	Curr Biol	WB,IF
Lingling Gao	31550546	Int J Biochem Cell Biol	WB,IHC
Xuanjin Wei	35514241	Exp Dermatol	WB,IF

Storage

Storage:

Store at -20°C. Stable for one year after shipment.

Storage Buffer:

PBS with 0.02% sodium azide and 50% glycerol pH 7.3.

Aliquoting is unnecessary for -20°C storage

*** 20ul sizes contain 0.1% BSA

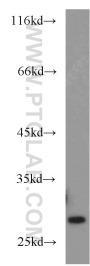
For technical support and original validation data for this product please contact:

T: 1 (888) 4PTGLAB (1-888-478-4522) (toll free in USA), or 1(312) 455-8498 (outside USA)

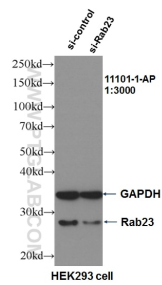
E: proteintech@ptglab.com
W: ptglab.com

This product is exclusively available under Proteintech Group brand and is not available to purchase from any other manufacturer.

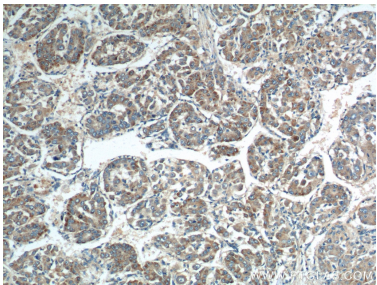
Selected Validation Data



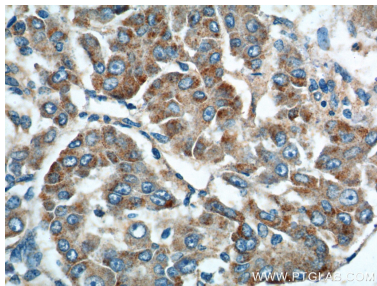
mouse brain tissue were subjected to SDS PAGE followed by western blot with 11101-1-AP (RAB23 antibody) at dilution of 1:1000 incubated at room temperature for 1.5 hours.



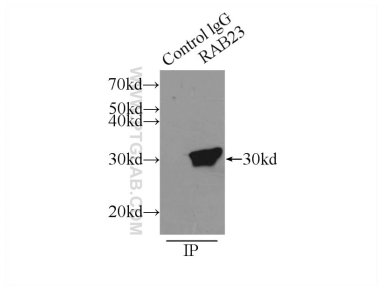
WB result of RAB23 antibody (11101-1-AP, 1:3000) with si-Control and si-Rab23 transfected HEK293 cells.



Immunohistochemical analysis of paraffin-embedded human liver cancer tissue slide using 11101-1-AP (RAB23 Antibody) at dilution of 1:200 (under 10x lens).



Immunohistochemical analysis of paraffin-embedded human liver cancer tissue slide using 11101-1-AP (RAB23 Antibody) at dilution of 1:200 (under 40x lens).



IP result of anti-Rab23 (IP:11101-1-AP, 3ug; Detection:11101-1-AP 1:1000) with mouse brain tissue lysate 7000ug.