

For Research Use Only

# ATG12 Polyclonal antibody

Catalog Number: 11122-1-AP **25 Publications**



## Basic Information

<b>Catalog Number:</b> 11122-1-AP	<b>GenBank Accession Number:</b> BC011033	<b>Purification Method:</b> Antigen affinity purification
<b>Size:</b> 150ul, Concentration: 300 µg/ml by Nanodrop and 140 µg/ml by Bradford method using BSA as the standard;	<b>GeneID (NCBI):</b> 9140	<b>Recommended Dilutions:</b> WB 1:500-1:1000 IP 0.5-4.0 ug for IP and 1:200-1:1000 for WB IHC 1:20-1:200
<b>Source:</b> Rabbit	<b>Full Name:</b> ATG12 autophagy related 12 homolog (S. cerevisiae)	
<b>Isotype:</b> IgG	<b>Calculated MW:</b> 16 kDa	
<b>Immunogen Catalog Number:</b> AG1586	<b>Observed MW:</b> 48-50 kDa	

## Applications

<b>Tested Applications:</b> IHC, IP, WB, ELISA	<b>Positive Controls:</b> WB : human bladder tissue, UV treated HEK-293 IP : HEK-293 cells, IHC : human prostate cancer tissue,
<b>Cited Applications:</b> IHC, WB	
<b>Species Specificity:</b> human, mouse	
<b>Cited Species:</b> human, mouse, rat	
<b>Note-IHC: suggested antigen retrieval with TE buffer pH 9.0; (*) Alternatively, antigen retrieval may be performed with citrate buffer pH 6.0</b>	

## Background Information

ATG12, also named as APG12 and APG12L, belongs to the ATG12 family. It is required for autophagy. Free ATG12 is 15kd or 8kd. Conjugated to ATG5, ATG12-ATG5 show 48-55kd.

## Notable Publications

Author	Pubmed ID	Journal	Application
Samana Batool	30274346	Int J Mol Sci	WB
Yannan Liu	30207362	Food Funct	WB,IHC
Min Liu	28871079	Nat Commun	WB

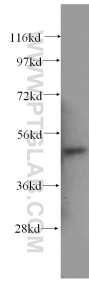
## Storage

**Storage:**  
Store at -20°C. Stable for one year after shipment.  
**Storage Buffer:**  
PBS with 0.02% sodium azide and 50% glycerol pH 7.3.  
Aliquoting is unnecessary for -20°C storage

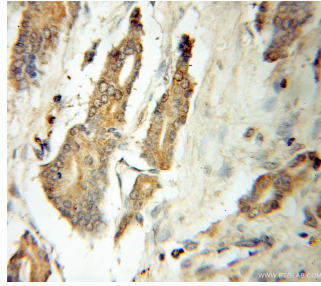
For technical support and original validation data for this product please contact:  
T: 1 (888) 4PTGLAB (1-888-478-4522) (toll free in USA), or 1(312) 455-8498 (outside USA)  
E: proteintech@ptglab.com  
W: ptglab.com

**This product is exclusively available under Proteintech Group brand and is not available to purchase from any other manufacturer.**

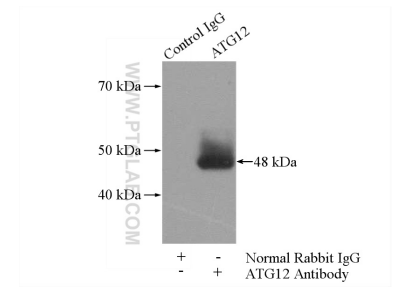
## Selected Validation Data



human bladder tissue were subjected to SDS PAGE followed by western blot with 11122-1-AP (ATG12 antibody) at dilution of 1:500 incubated at room temperature for 1.5 hours.



Immunohistochemical analysis of paraffin-embedded human prostate cancer using 11122-1-AP (ATG12 antibody) at dilution of 1:50 (under 10x lens).



IP Result of anti-ATG12 (IP:11122-1-AP, 4ug; Detection:11122-1-AP 1:300) with HEK-293 cells lysate 880ug.