

For Research Use Only

# ABCD1 Polyclonal ANTIBODY

Catalog Number: 11159-1-AP



## Basic Information

**Catalog Number:**

11159-1-AP

**Size:**

150UL, Concentration: 133 µg/ml by Bradford method using BSA as the standard;

**Source:**

Rabbit

**Isotype:**

IgG

**Immunogen Catalog Number:**

AG1635

**GenBank Accession Number:**

BC025358

**GeneID (NCBI):**

215

**Full Name:**

ATP-binding cassette, sub-family D (ALD), member 1

**Calculated MW:**

745 aa, 83 kDa

**Observed MW:**

75 kDa

**Purification Method:**

Antigen affinity purification

**Recommended Dilutions:**

WB 1:500-1:2000

IP 0.5-4.0 µg for IP and 1:500-1:1000 for WB

IHC 1:20-1:200

IF 1:20-1:200

## Applications

**Tested Applications:**

IF, IHC, IP, WB, ELISA

**Species Specificity:**

human, mouse, rat

**Note-IHC: suggested antigen retrieval with TE buffer pH 9.0; (\*) Alternatively, antigen retrieval may be performed with citrate buffer pH 6.0**

**Positive Controls:**

WB: human brain tissue, HeLa cells, mouse liver tissue

IP: mouse liver tissue,

IHC: human lung cancer tissue,

IF: HeLa cells,

## Background Information

ABCD1 (also known as ALDP) is a member of the ATP-binding cassette (ABC) transporter superfamily which functions as transporter for a wide variety of substrates. It localizes to the peroxisomal membrane. The exact function is not clear so far. Various mutations of ABCD1 cause X-linked adrenoleukodystrophy (X-ALD), an inherited neurodegenerative disease affecting the nervous system white matter and adrenal cortex.

## Storage

**Storage:**

Store at -20°C. Stable for one year after shipment.

**Storage Buffer:**

PBS with 0.1% sodium azide and 50% glycerol pH 7.3.

Aliquoting is unnecessary for -20°C storage

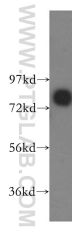
For technical support and original validation data for this product please contact:

T: 1 (888) 4PTGLAB (1-888-478-4522) (toll free in USA), or 1(312) 455-8498 (outside USA)

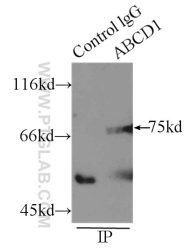
E: proteintech@ptglab.com  
W: ptglab.com

This product is exclusively available under Proteintech Group brand and is not available to purchase from any other manufacturer.

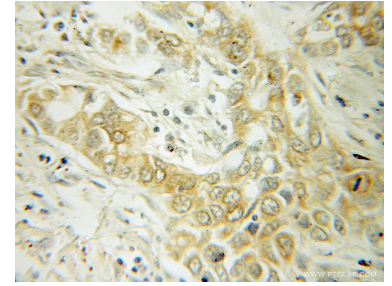
## Selected Validation Data



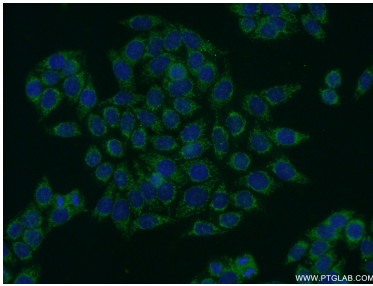
human brain tissue were subjected to SDS PAGE followed by western blot with 11159-1-AP (ABCD1 antibody) at dilution of 1:300 incubated at room temperature for 1.5 hours.



IP Result of anti-ABCD1 (IP:11159-1-AP, 4ug; Detection:11159-1-AP 1:500) with mouse liver tissue lysate 5000ug.



Immunohistochemical analysis of paraffin-embedded human lung cancer using 11159-1-AP (ABCD1 antibody) at dilution of 1:50 (under 10x lens).



Immunofluorescent analysis of HeLa cells using 11159-1-AP (ABCD1 antibody) at dilution of 1:50 and Alexa Fluor 488-conjugated AffiniPure Goat Anti-Rabbit IgG(H+L).